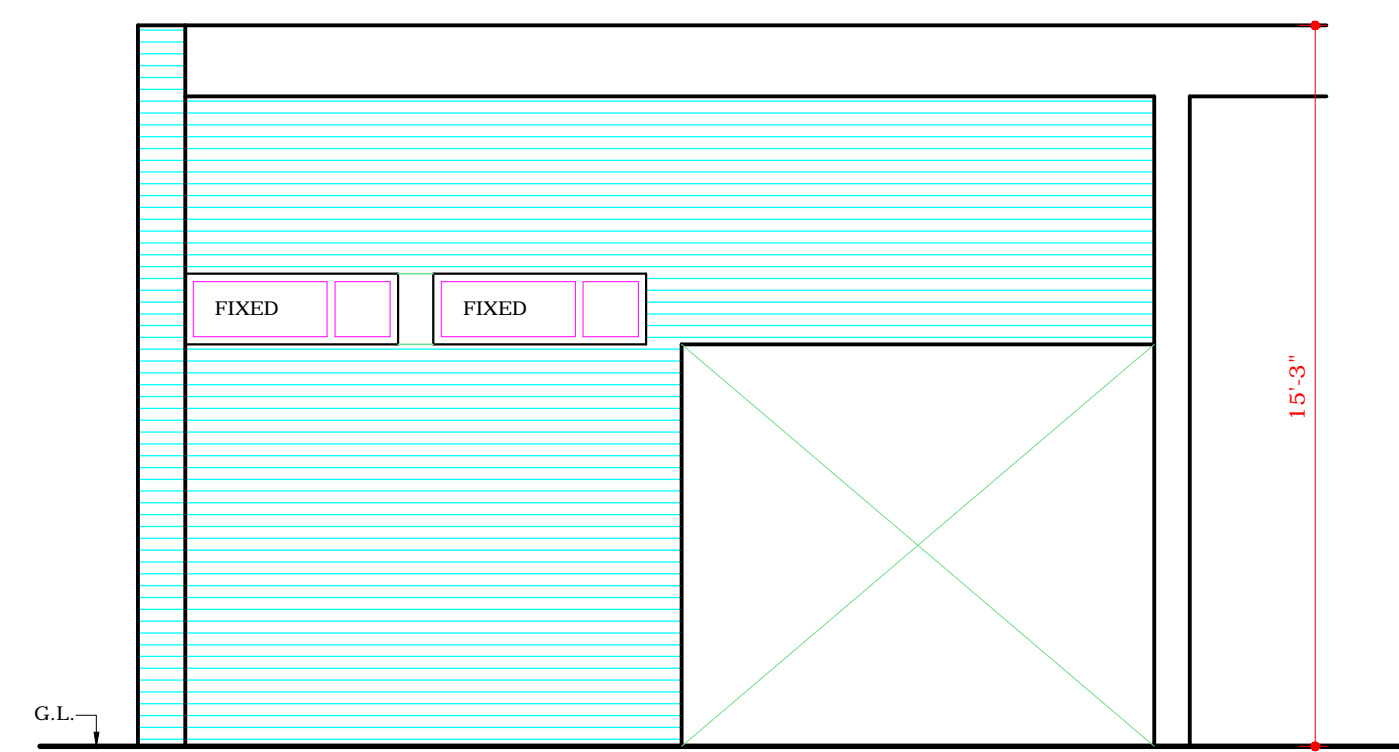
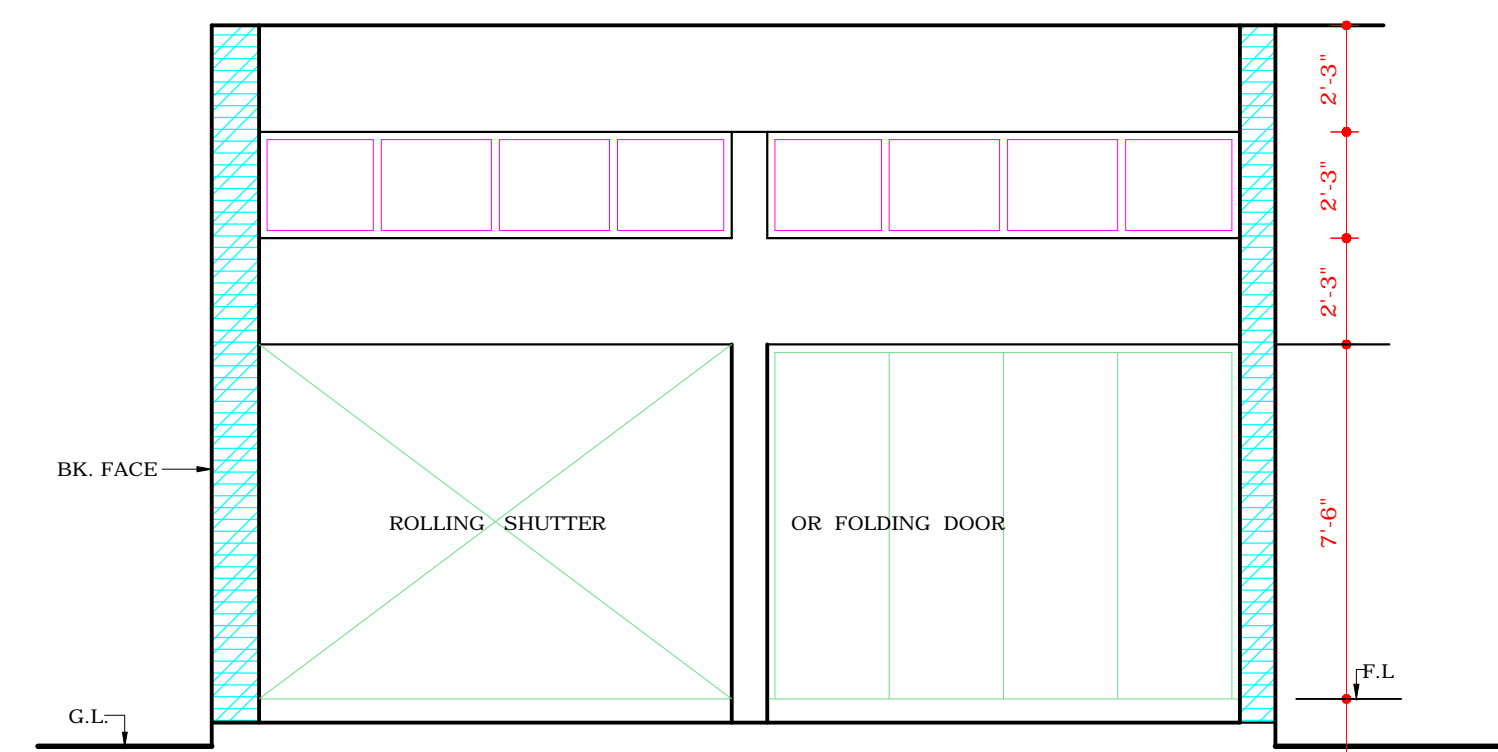


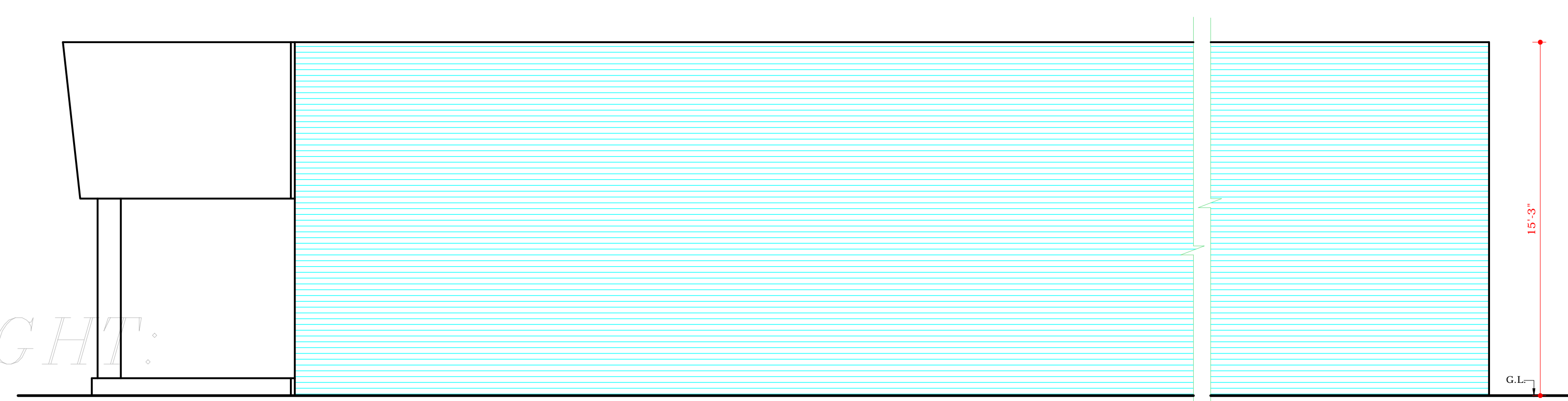
FRONT ELEVATION



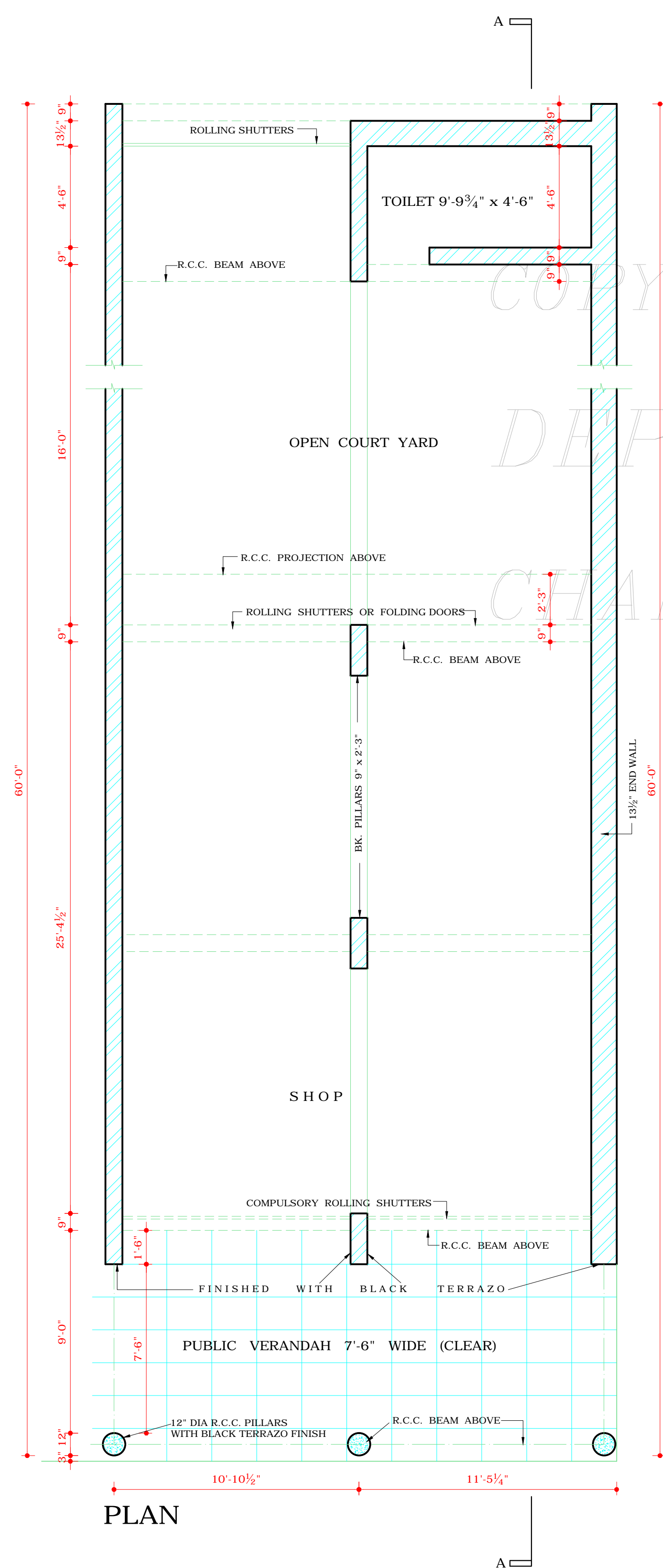
REAR ELEVATION



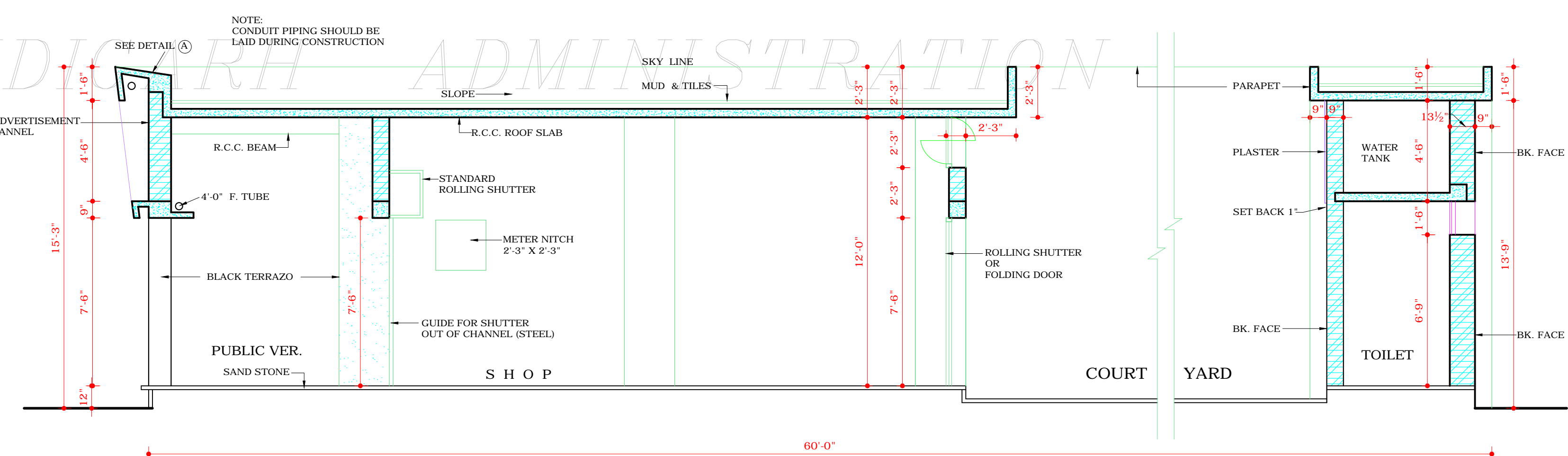
ELEVATION (INTERIOR)



END ELEVATION

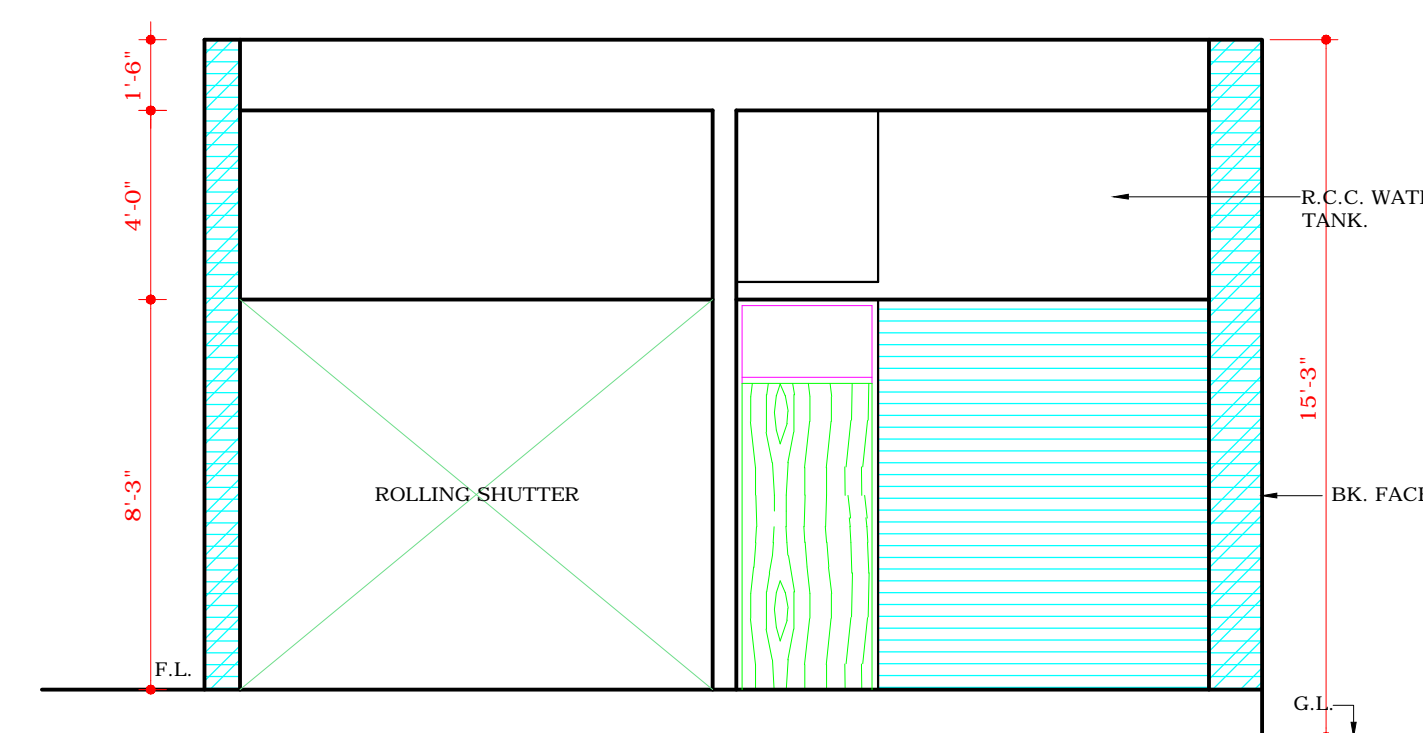


PLAN

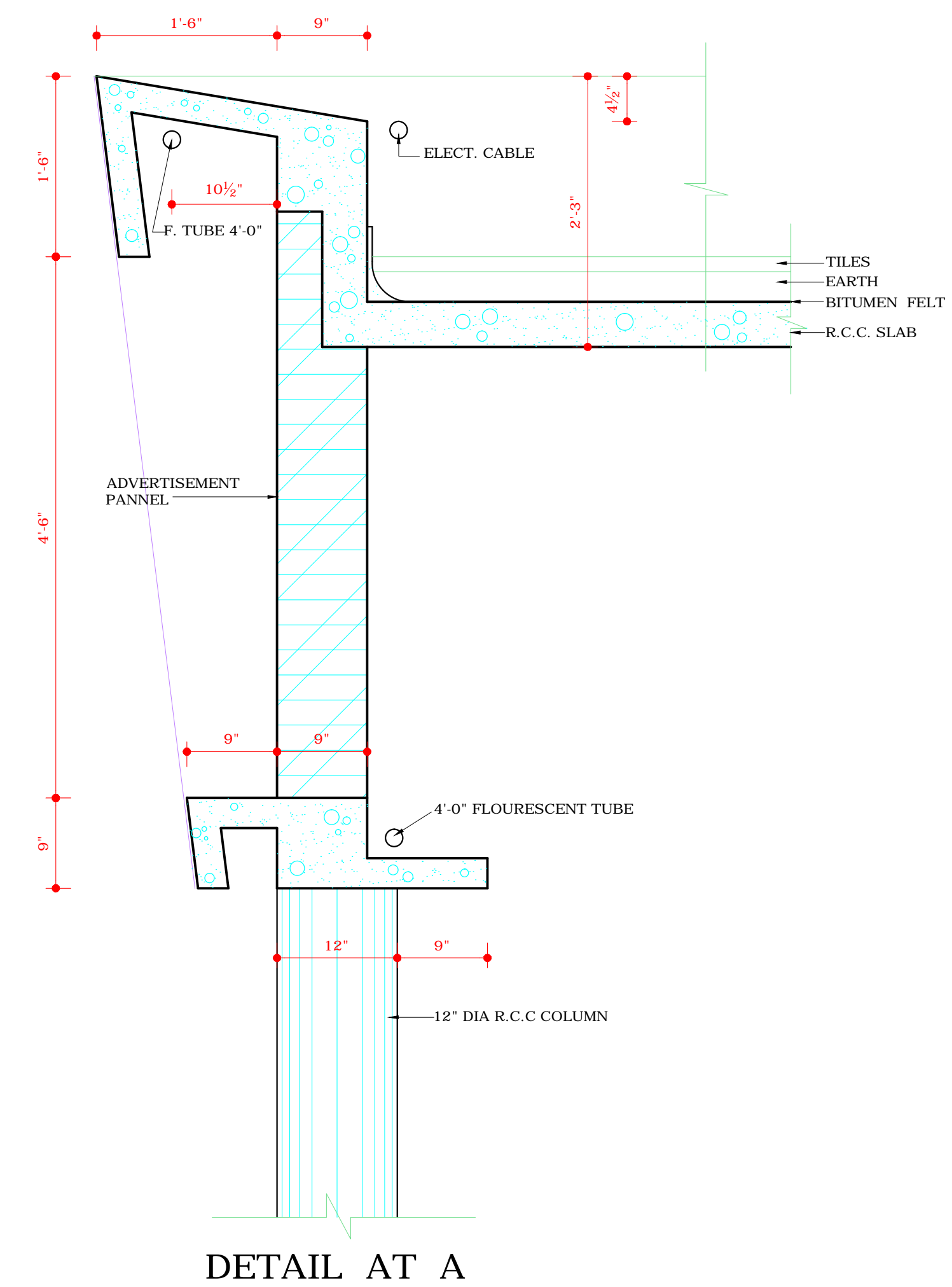


SECTION AT A A'

- NOTE:
1. IN CASE A PERSON BUILDS A SHOP FIRST HE CAN CHARGE HALF THE COST OF THE COMMON WALLS & COLUMNS FROM THE ADJOINING OWNER'S WHEN THEY BUILD.
  2. NO BRICK WORK IN PARAPET WALLS.
  3. NO STORAGE ABOVE SKY LINE.
  4. NO HOOKS OR ELECTRIC CABLES SHOULD BE VISIBLE IN THE PUBLIC VERANDAH.



ELEVATION (INTERIOR)



DETAIL AT A

1. THIS DRG. IS THE PROPERTY OF THE DEPTT. OF ARCHITECTURE CHANDIGARH. U.T. AND MUST NOT BE ALTERED COPIED OR USED IN WHOLE OR IN PART WITH OUT THE PERMISSION OF THIS DEPTT. IN WRITING.
2. THIS DRG. IS ACTUALLY TRACED FROM DRG. No. 4 OF JOB No. 227 ON DATED

NOTE:- THIS DRAWING HAS BEEN COMPUTERISED ON 06.02.09 FROM DRG. No. 4, JOB NO. 227.

DESCRIPTION. DATE SIGN

REVISIONS.

Sd/- S.L. VARMA 5.X.70 CHIEF ADMINISTRATOR.

Sd/- M.N. SHARMA 28.9.70 CHIEF ARCHITECT. SENIOR ARCHITECT

Sd/- S.D. SHARMA 7.6.63 ARCHITECT ASSTT. ARCHITECT

OFFICE OF THE CHIEF ARCHITECT CHANDIGARH U.T.

SCALE = 4'-0" TO AN INCH. DATE: 7.6.63

DRAWN Sd/- KRISHAN 4TH NOV.1972 DRG.No. 4 JOB No. 227

DESIGN FOR SHOPS SIZE 21'-0" x 60'-0" IN SECTOR 15-D CHANDIGARH.

DISCLAIMER

THOUGH EVERY CARE HAS BEEN TAKEN TO PROVIDE THE CORRECT VERSION OF THE ARCHITECTURAL CONTROL ON THIS DIGITIZED (PDF) FORMAT. YET IN CASE OF ANY DISCREPANCY, THE MASTER COPY OF THE ARCHITECTURAL CONTROL APPLICABLE ON EACH SUCH SITE, AS AVAILABLE IN THE COMMERCIAL RECORD OF THE OFFICE OF CHIEF ARCHITECT OR HERHIS INTERPRETATION WILL OVERRULE THE DIGITIZED FORMAT.

ATTESTED TRUE COPY. Sd/- KUREKAR ASSTT. ARCHITECT.