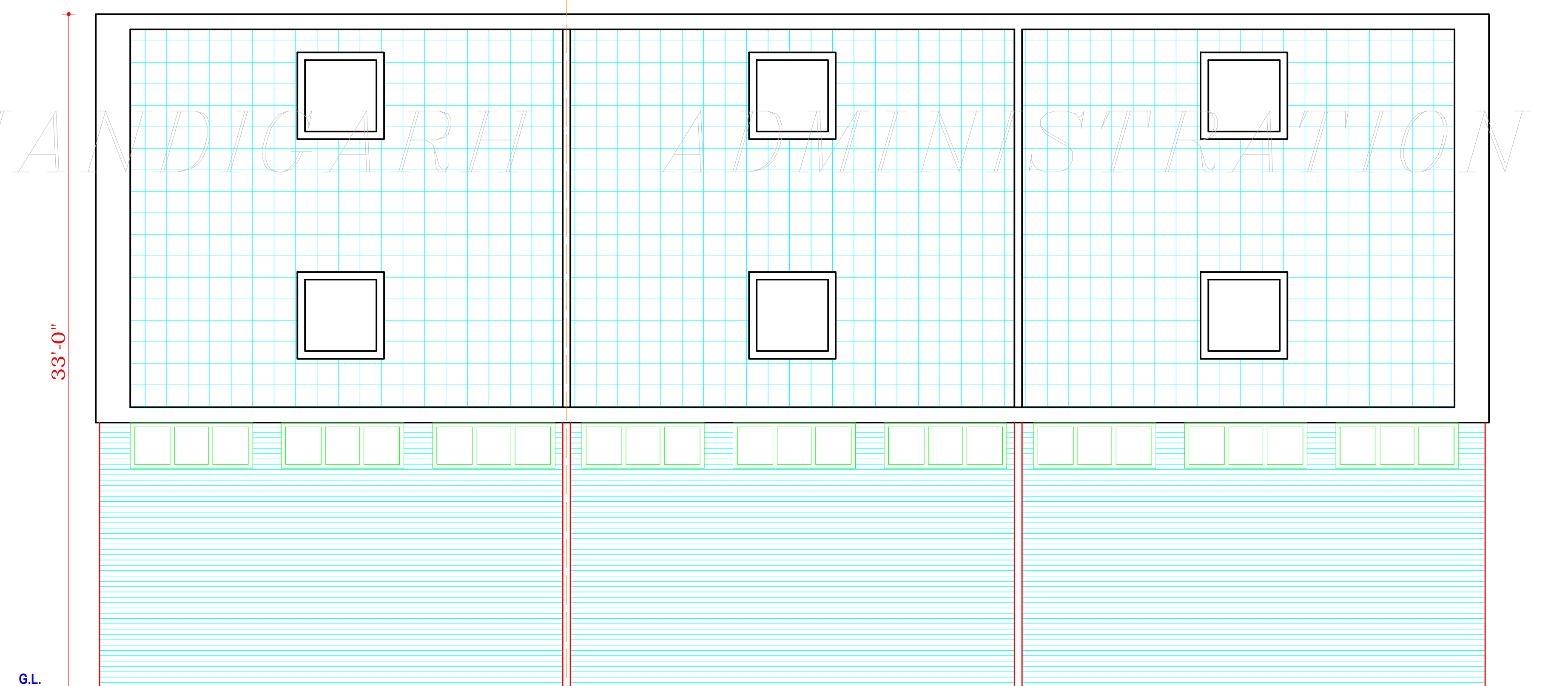


FRONT ELEVATION
(THREE UNITS)



REAR ELEVATION
(THREE UNITS)

COPYRIGHT:

DEPARTMENT OF URBAN PLANNING

CHANDIGARH ADMINISTRATION

DISCLAIMER:-

THOUGH EVERY CARE HAS BEEN TAKEN TO PROVIDE THE CORRECT VERSION OF THE ARCHITECTURAL CONTROL ON THIS DIGITIZED (PDF) FORMAT, YET IN CASE OF ANY DISCREPANCY, THE MASTER COPY OF THE ARCHITECTURAL CONTROL APPLICABLE ON EACH SUCH SITE, AS AVAILABLE IN THE COMMERCIAL RECORD OF THE OFFICE OF CHIEF ARCHITECT OR HER/HIS INTERPRETATION WILL OVERRULE THE DIGITIZED FORMAT.

-sd- ATTESTED AS TRUE COPY
ASSISTANT ARCHITECT

-sd- S.D. SHARMA
ARCHITECT

-sd- M.N. SHARMA
28-9-70
CHIEF ARCHITECT

-sd- S.L. VERMA
5.10.70
CHIEF ADMINISTRATOR

NOTE :-
REVISED ON 19.10.63
-sd- K.L.

SCALE : 4 FT. TO AN INCH	DATE - 31-05-63
DRAWN - K.L.	CHECKED -
JOB NO.- 358	DRG. NO. - 2

TWO BAY S.C.F.
SECTOR-16 D
ELEVATION