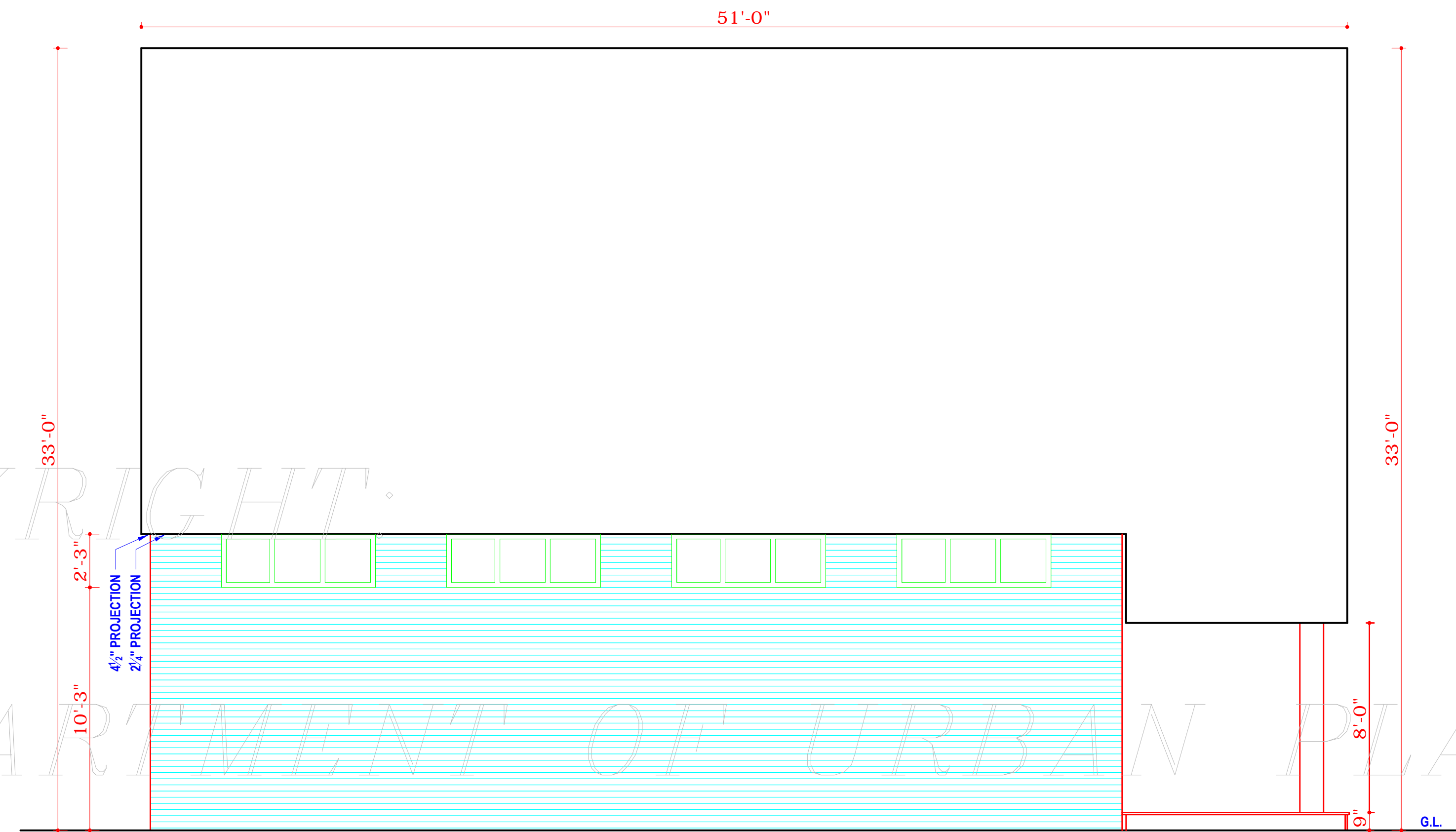
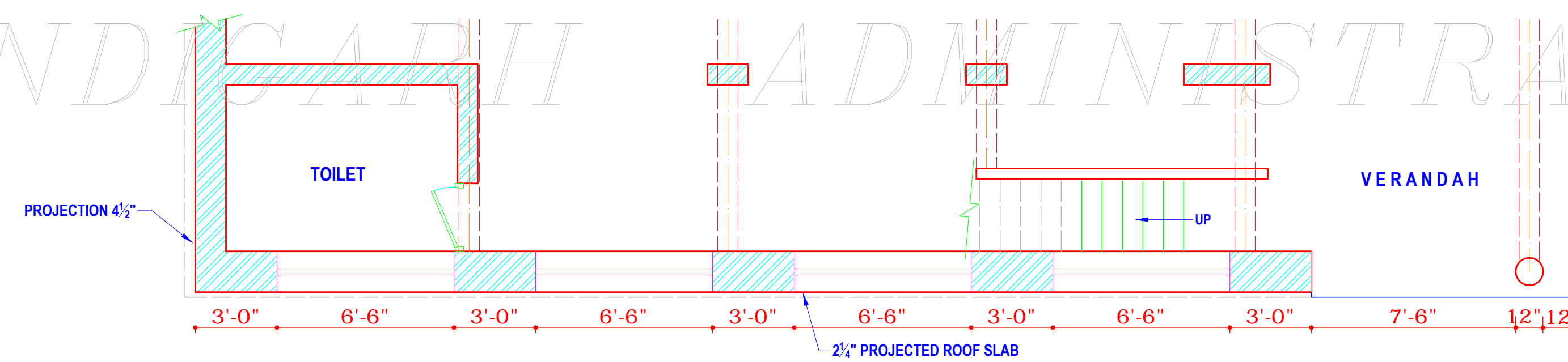


DEPARTMENT OF
ARCHITECTURE
CHANDIGARH. U.T.



END ELEVATION



PART PLAN

DISCLAIMER:-

THOUGH EVERY CARE HAS BEEN TAKEN TO PROVIDE THE CORRECT VERSION OF THE ARCHITECTURAL CONTROL ON THIS DIGITIZED (PDF) FORMAT, YET IN CASE OF ANY DISCREPANCY, THE MASTER COPY OF THE ARCHITECTURAL CONTROL APPLICABLE ON EACH SUCH SITE, AS AVAILABLE IN THE COMMERCIAL RECORD OF THE OFFICE OF CHIEF ARCHITECT OR HER/HIS INTERPRETATION WILL OVERRULE THE DIGITIZED FORMAT.

S.NO. NOTES

- 1 THIS DRAWING IS THE PROPERTY OF THE DEPTT. OF ARCHITECTURE CHANDIGARH U.T. FORMERLY OF THE P.B. GOVT. & MUST NOT BE ALTERED, COPIED OR USED IN WHOLE OR IN PARTS WITHOUT THE PRIOR PERMISSION OF THIS DEPARTMENT IN WRITING.
- 2 THIS DRAWING IS ACTUALLY TRACED FROM DRG. NO. 6 JOB NO. 358 DATED 30.4.74.

S.NO. DESCRIPTIONS

REVISIONS

- sd - S.L. VERMA 5.10.70 CHIEF ADMINISTRATOR	
- sd - M.N. SHARMA 28.9.70 CHIEF ARCHITECT	- sd - SENIOR ARCHITECT
- sd - S.D. SHARMA 19-10-63 ARCHITECT	- sd - ASSTT. ARCHITECT

OFFICE OF THE
CHIEF ARCHITECT
CHANDIGARH.

SCALE : 4'-0" TO AN INCH DATE:

DRAWN BY K.L.	JOB NO. 358	DRG. NO. 06
------------------	----------------	----------------

TWO BAY SHOP CUM FLATS
SECTOR-16 D

END ELEVATION