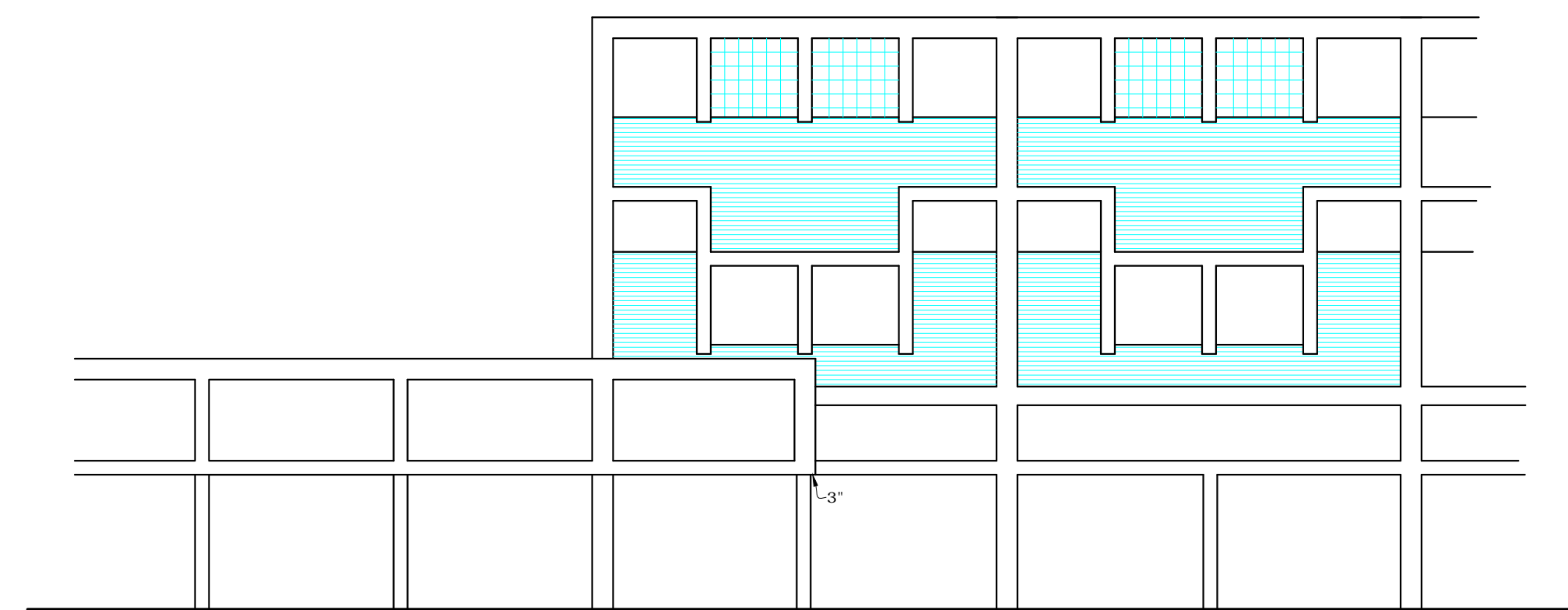
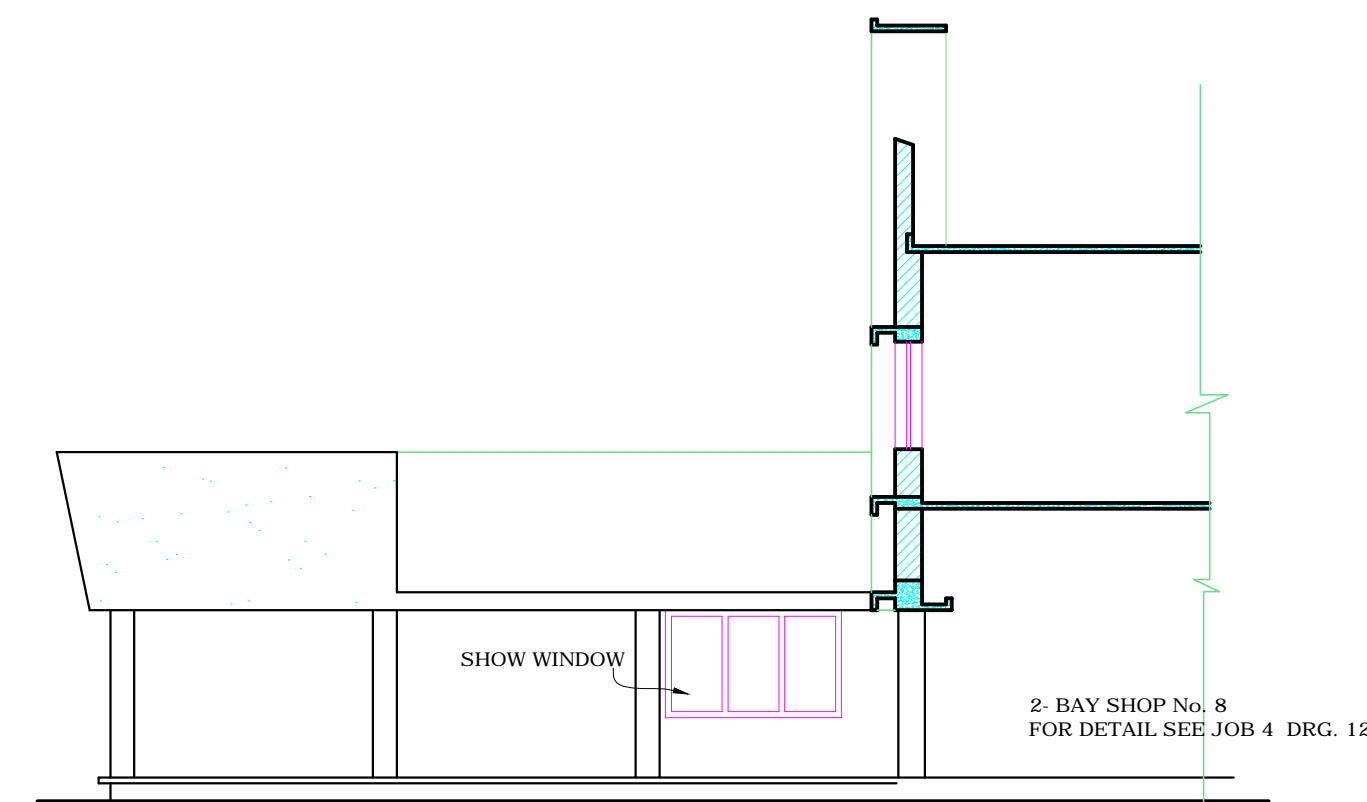


CHANDIGARH  
PROJECT

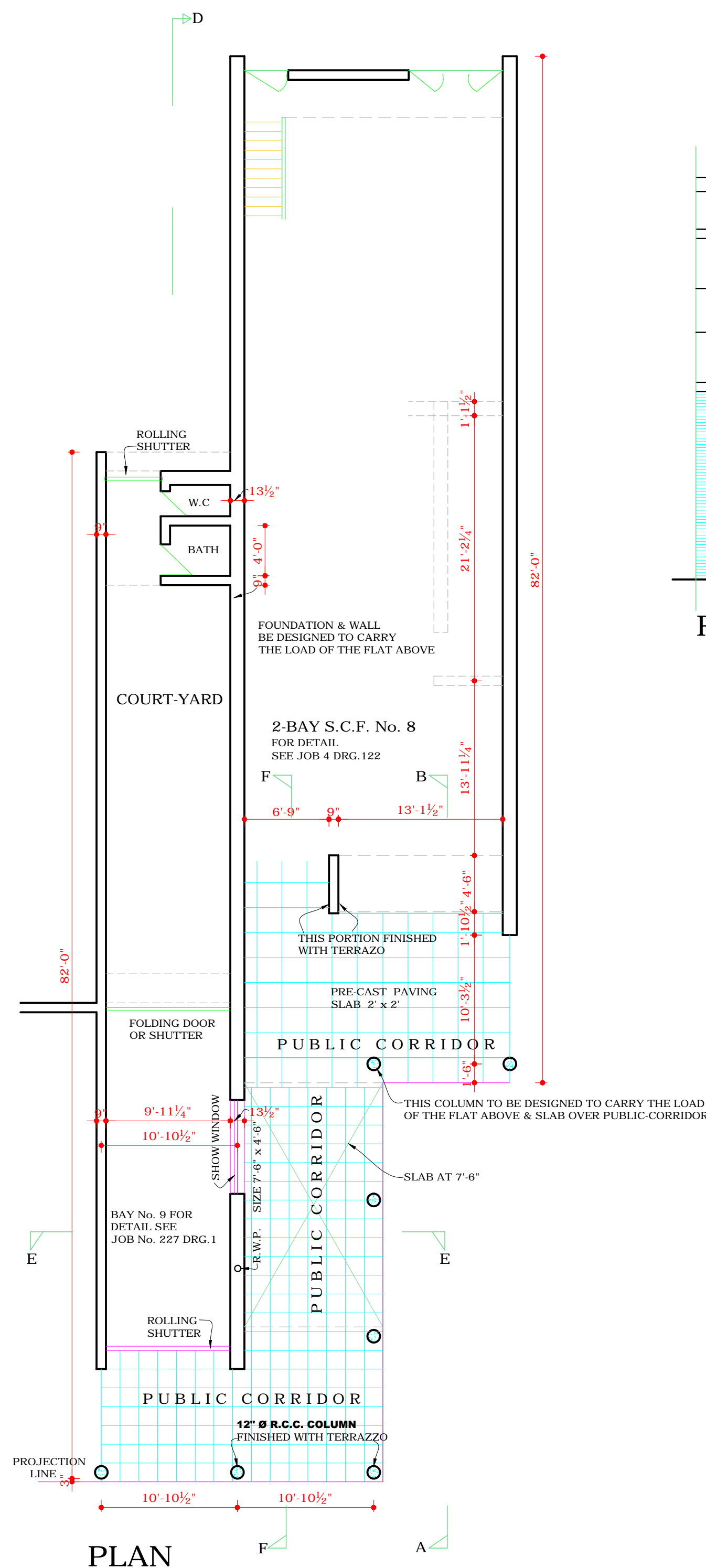
THIS DRG. IS THE PROPERTY OF THE DEPTT. OF ARCHITECTURE CHANDIGARH U.T. & MUST NOT BE ALTERED, COPIED OR USED IN WHOLE OR IN PART WITHOUT THE PERMISSION OF THE DEPTT. IN WRITING.



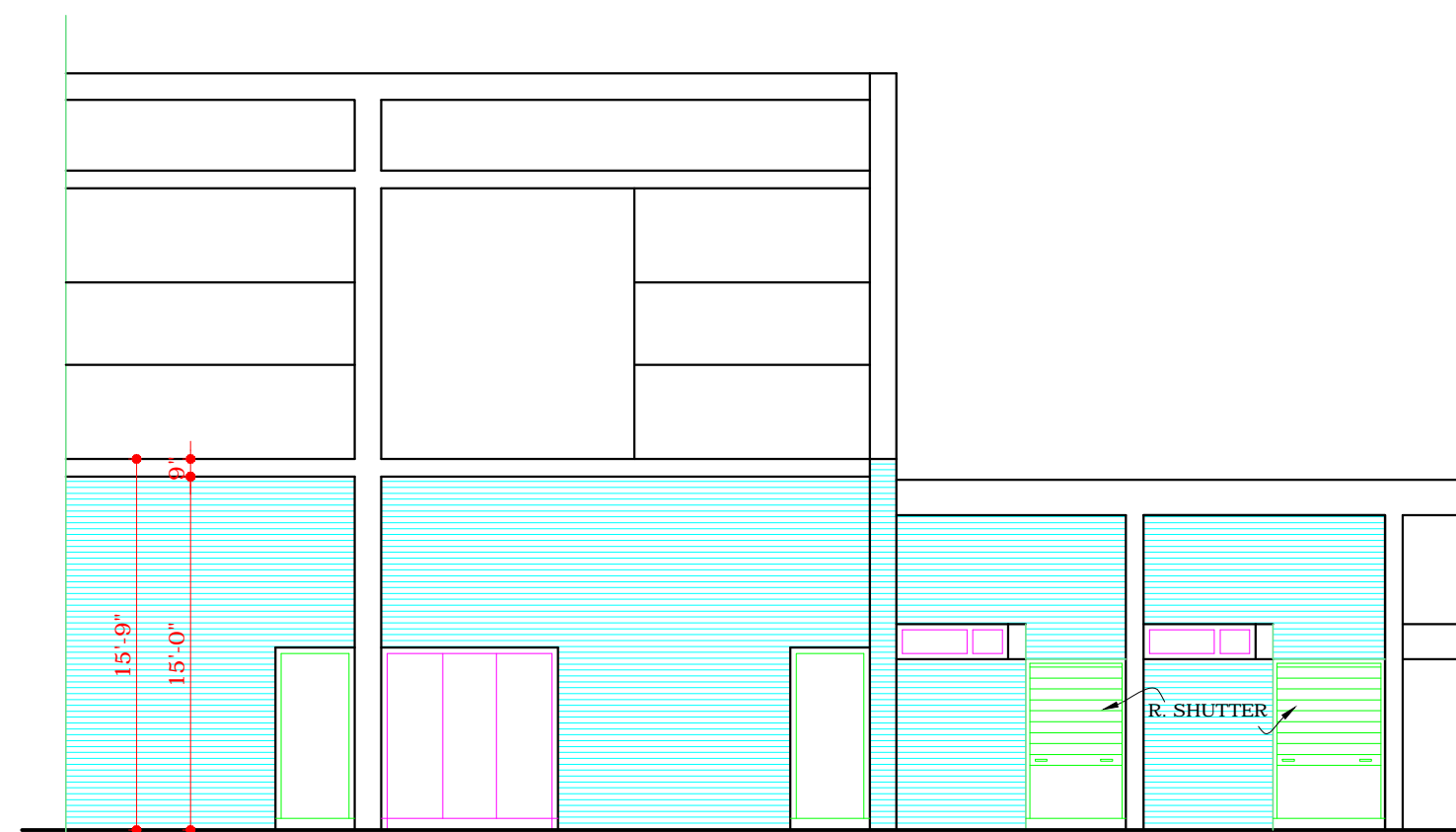
FRONT ELEVATION



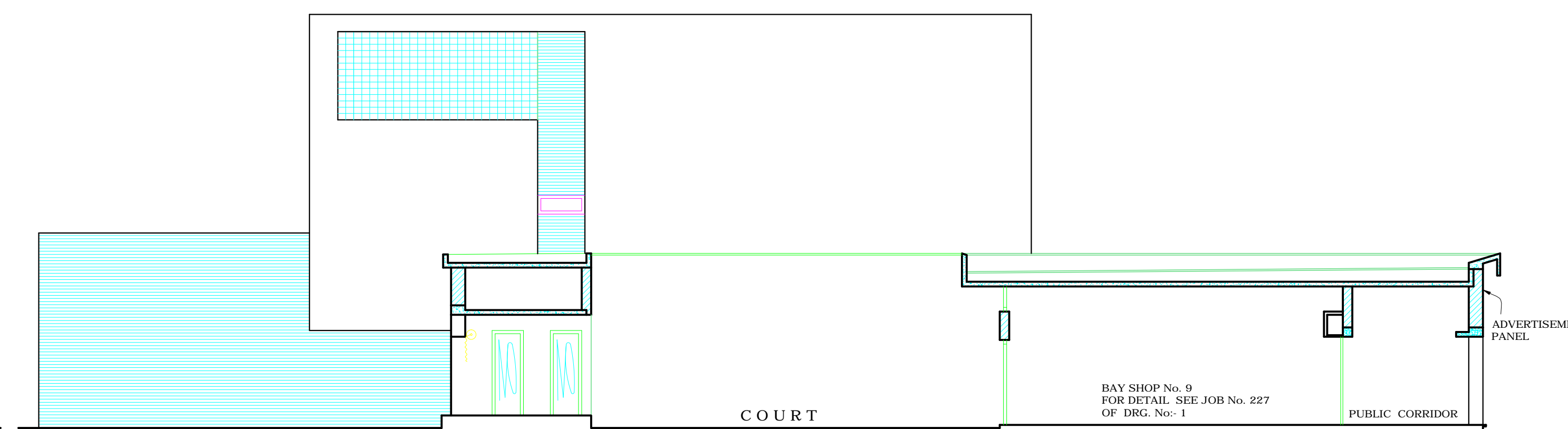
SECTION AT A B



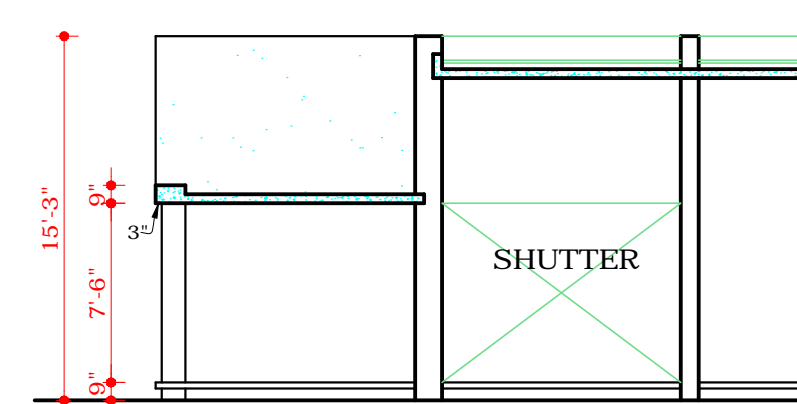
PLAN



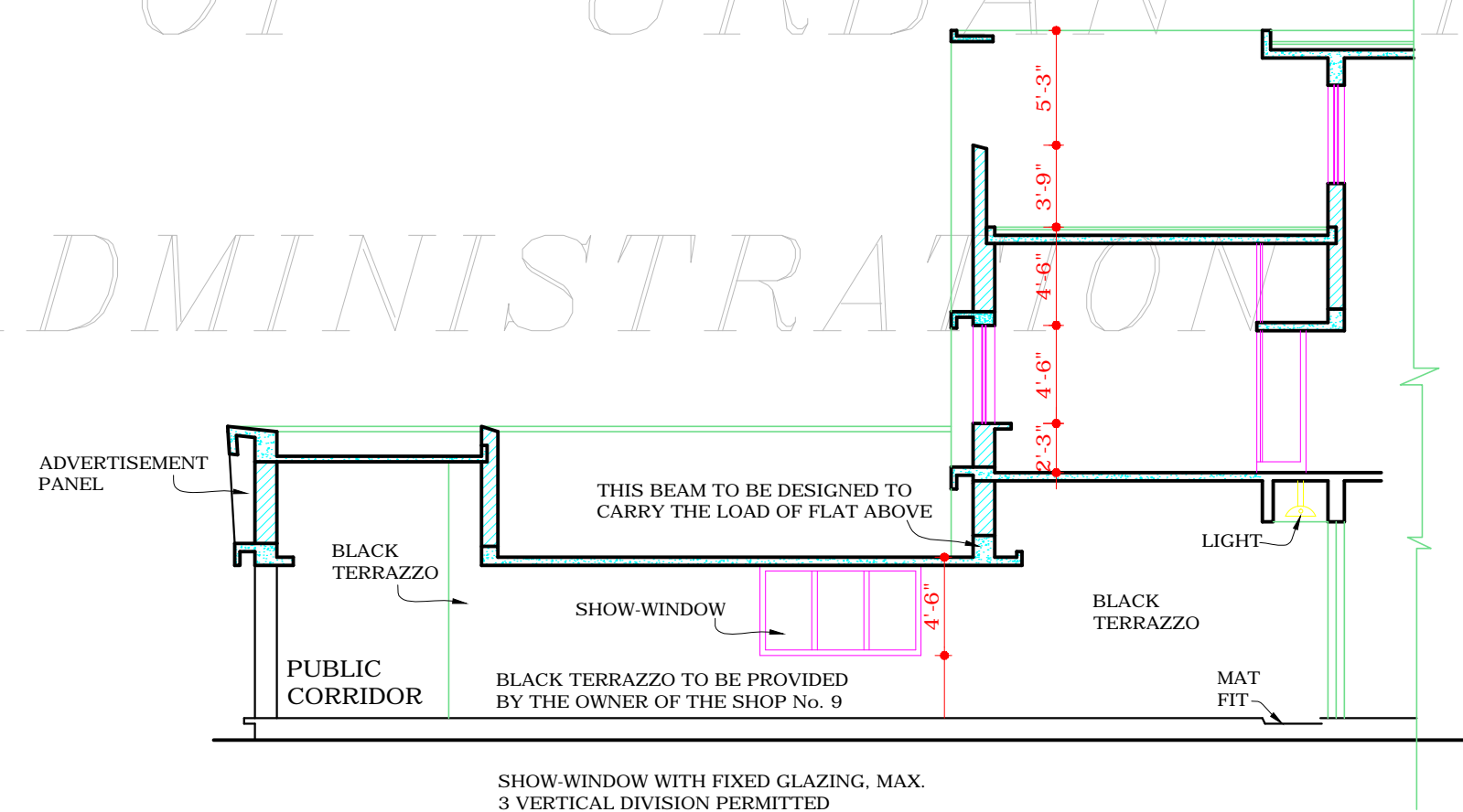
REAR ELEVATION



SECTION AT C-D



SECTION E-E



SECTION F-F

COPYRIGHT:  
DEPARTMENT OF URBAN PLANNING  
CHANDIGARH ADMINISTRATION

Sd/- O.P. MEHTA  
DT: 11.7.90  
CHIEF ARCHITECT

Sd/- S.K. MIDHA  
DT: 6.7.90  
SENIOR ARCHITECT

Sd/- SARBJEET SINGH  
DT: 3.7.90  
ARCHITECT

Sd/- T.KAUR  
CHIEF ADMINISTRATOR

APPROVAL OF THE FINANCE SECRETARY, CHD. ADMIN. FOR THE ADDITIONS AND ALTERATIONS FOR PROVIDING OF OPENING AT THE REAR END OF SEMI-INDUSTRIAL BAY SHOP No. 9 TO 16 IN SECTOR 18-D, RECEIVED VIDE MEMO No. 29/1/87 - UTFI (A) - 90/9451 DATED. 18.9.90

NOTE:- THIS DRAWING HAS BEEN COMPUTERISED ON 08.02.09 FROM DRG. NO. 3, JOB NO. 227.

Sd/- P. JEANNERET  
CHIEF ARCHITECT

SENIOR ARCHITECT

Sd/- ADITYA PARKASH  
ARCHITECT

ASSTT. ARCHITECT

SCALE :- EIGHT FEET TO AN INCH.

DRAWN	CHECKED	DRG. No.
JOB No. 227	DATE	3

DISCLAIMER

THOUGH EVERY CARE HAS BEEN TAKEN TO PROVIDE THE CORRECT VERSION OF THE ARCHITECTURAL CONTROL ON THIS DIGITIZED (PDF) FORMAT, YET IN CASE OF ANY DISCREPANCY, THE MASTER COPY OF THE ARCHITECTURAL CONTROL, APPLICABLE ON EACH SUCH SITE, AS AVAILABLE IN THE COMMERCIAL RECORD OF THE OFFICE OF CHIEF ARCHITECT OR HER/HIS INTERPRETATION WILL OVERRULE THE DIGITIZED FORMAT.

ATTESTED AS TRUE COPY CHIEF ADMINISTRATOR

Sd/- KUREKAR

JUNCTION BETWEEN BAY SHOP No. 9 AND BAY SHOP No. 8 IN SECTOR 18-D