

**CHANDIGARH  
PROJECT**

**NOTES**

- THIS DRG. IS THE PROPERTY OF THE DEPTT. OF ARCHITECTURE, CHANDIGARH U.T. AND FORMERLY THE GOVT. OF PUNJAB AND MUST NOT BE ALTERED, COPIED OR USED IN WHOLE OR IN PART WITHOUT THE PERMISSION OF THIS DEPTT. IN WRITING.
- THIS ALSO APPLY TO SHOPNO. 30,31,34&35 WHERE SHOP NO.16,30&35 SHALL BE SIMILAR POSITION
- THIS DRG. IS ACTUALLY TRACED FROM DRG. No. 11 OF JOB No. 32/C ON DATED 22.2.74. Sd/-

| S.NO. | DESCRIPTION | DATE | SIGN |
|-------|-------------|------|------|
|-------|-------------|------|------|

**REVISIONS**

CHIEF ARCHITECT. SENIOR ARCHITECT.

ARCHITECT. Sd/-  
KUREKAR  
18.3.74  
ASSTT. ARCHITECT.

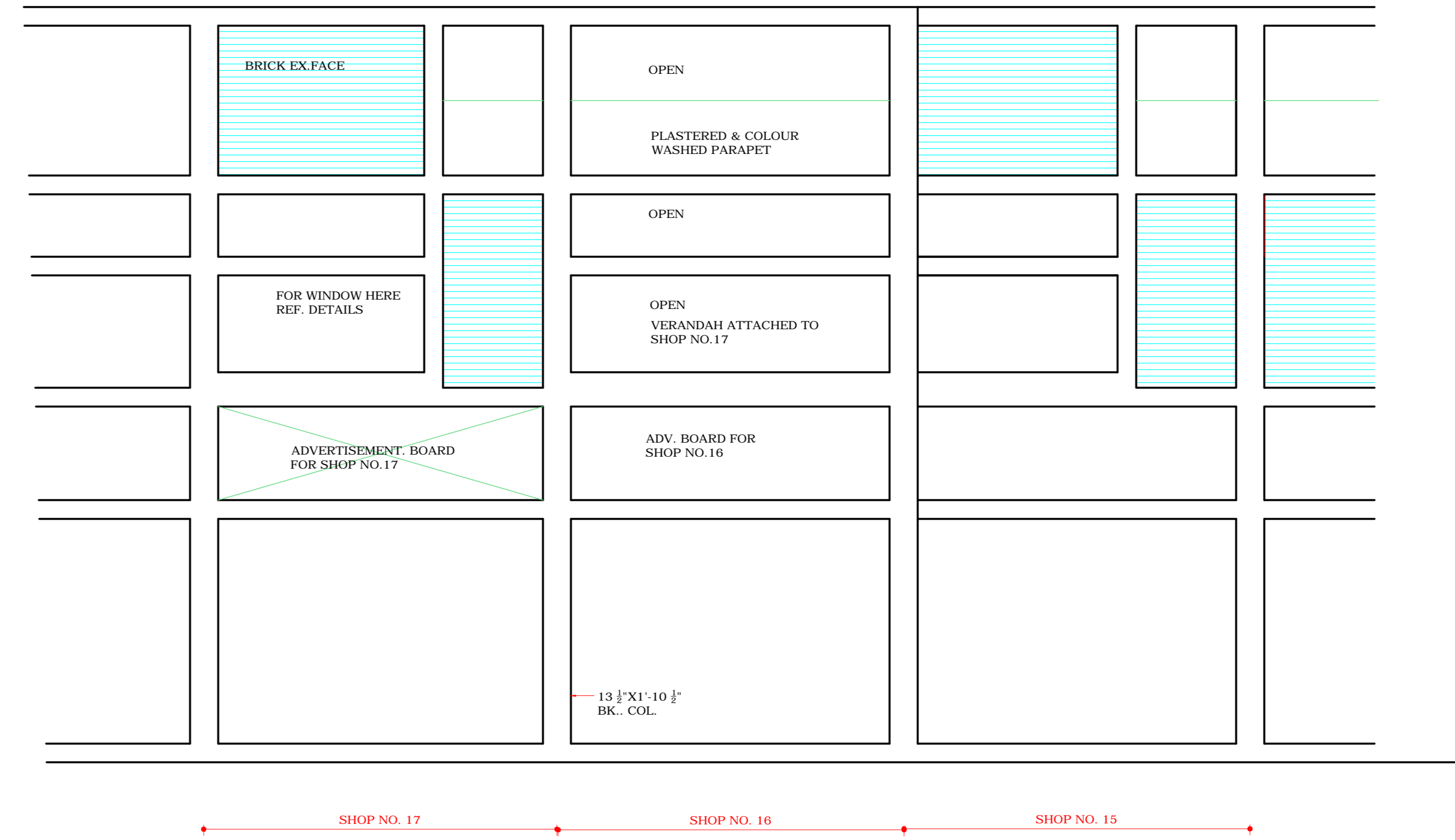
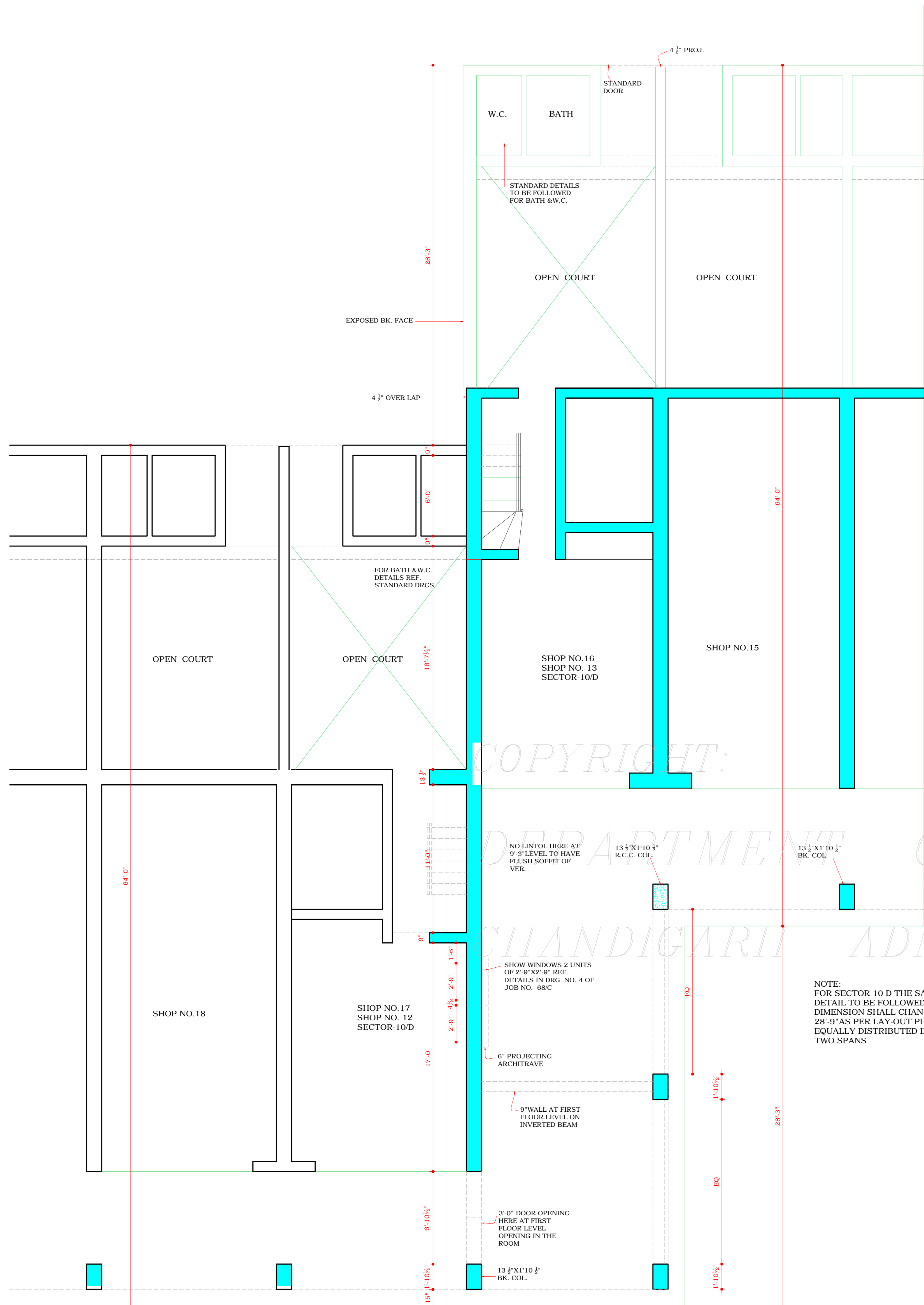
**OFFICE OF THE  
CHIEF ARCHITECT  
CHANDIGARH. U.T.**

SCALE - 1/4" TO A FOOT

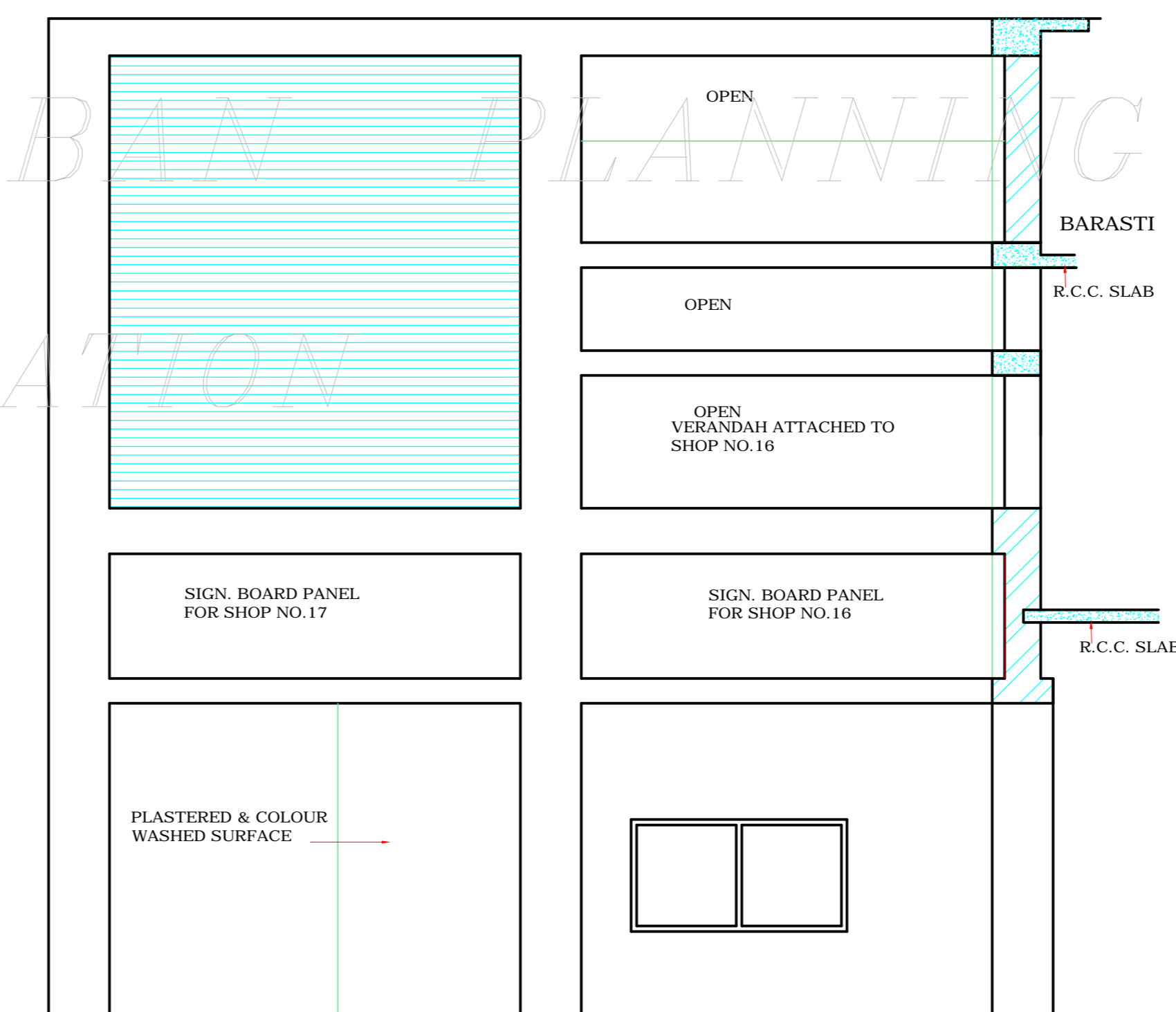
DATE -

|                              |                |                 |
|------------------------------|----------------|-----------------|
| DRAWN<br>Sd/-<br>23FEB. 1974 | DRG. No.<br>11 | JOB No.<br>32/C |
|------------------------------|----------------|-----------------|

**DETAIL OF SHOP NO.  
15,16,17& 18**



**FRONT ELEVATION**



NOTE: THIS DRAWING IS THE COMPUTERISED REPRODUCTION OF ORIGINAL DRG. No.11 JOB -No. 32/C DATED- 26-04-18

**DISCLAIMER**

THOUGH EVERY CARE HAS BEEN TAKEN TO PROVIDE THE CORRECT VERSION OF THE ARCHITECTURAL CONTROL ON THIS DIGITIZED (PDF) FORMAT. YET IN CASE OF ANY DISCREPANCY, THE MASTER COPY OF THE ARCHITECTURAL CONTROL, APPLICABLE ON EACH SUCH SITE, AS AVAILABLE IN THE COMMERCIAL RECORD OF THE OFFICE OF CHIEF ARCHITECT OR HER/HIS INTERPRET-ATION WILL OVERRULE THE DIGITIZED FORMAT.