

CHANDIGARH
PROJECT

THIS DRG. IS THE PROPERTY OF THE DEPTT. OF ARCHITECTURE, CHANDIGARH U.T. AND FORMERLY THE GOVT. OF PUNJAB AND MUST NOT BE ALTERED, COPIED OR USED IN WHOLE OR IN PART WITHOUT THE PERMISSION OF THIS DEPTT. IN WRITING.
THIS DRG. IS ACTUALLY TRACED FROM DRG. No. 17 OF JOB No. 32/C ON DATED 25.3.74. Sd/- P. MAHAJAN

NOTE: THIS DRAWING IS THE COMPUTERISED REPRODUCTION OF ORIGINAL DRG. No.17 JOB No. 32/C DATED- 30-04-18

S.No.	DESCRIPTION	DATE	SIGN
REVISIONS			

Sd/-
CHIEF ADMINISTRATOR

Sd/-
CHIEF ARCHITECT.

Sd/-
B.P. MATHUR
ARCHITECT.

Sd/-
SENIOR ARCHITECT.

ATTESTED TRUE COPY
ASSTT. ARCHITECT.

OFFICE OF THE
CHIEF ARCHITECT
CHANDIGARH, U.T.

SCALE - 1/4" TO A FOOT DATE -

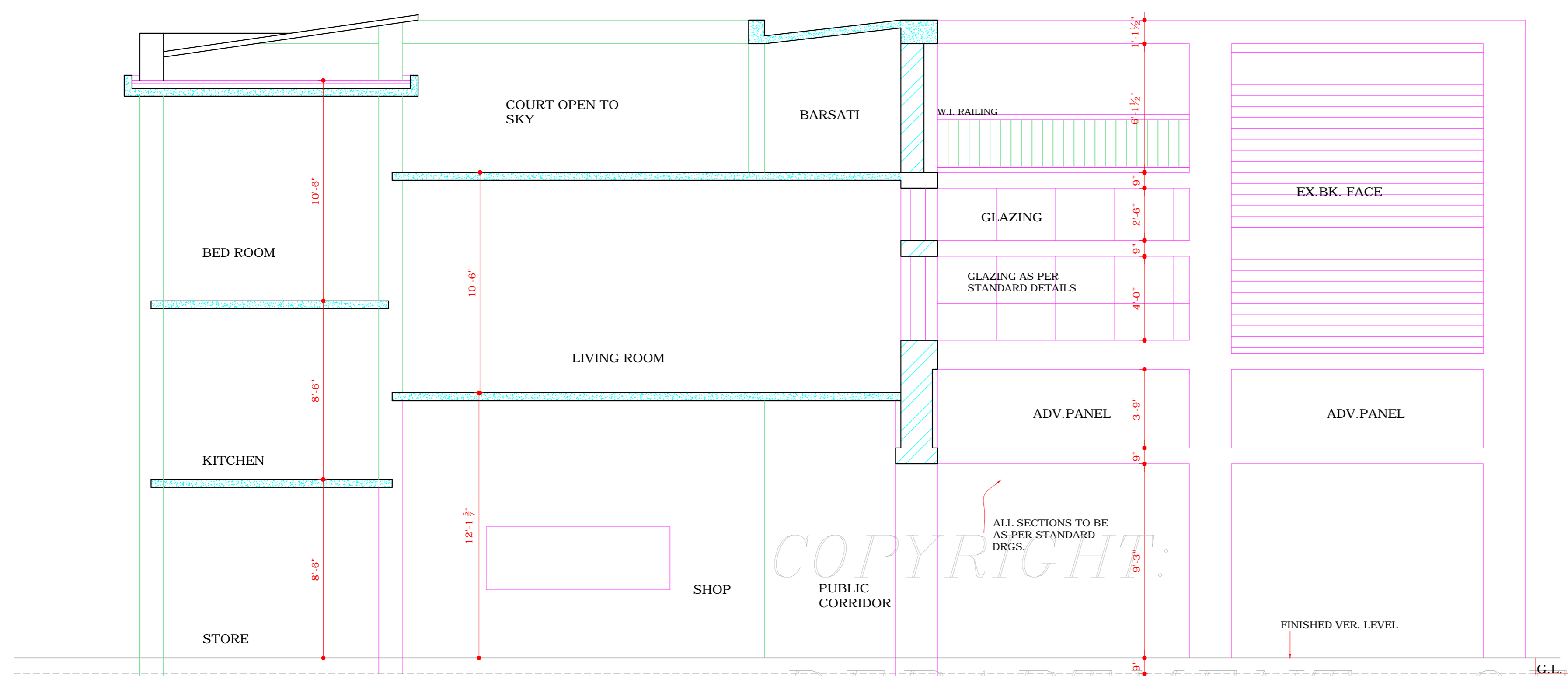
DRAWN
Sd/-
17 APRIL 1974

JOB No.
32/C

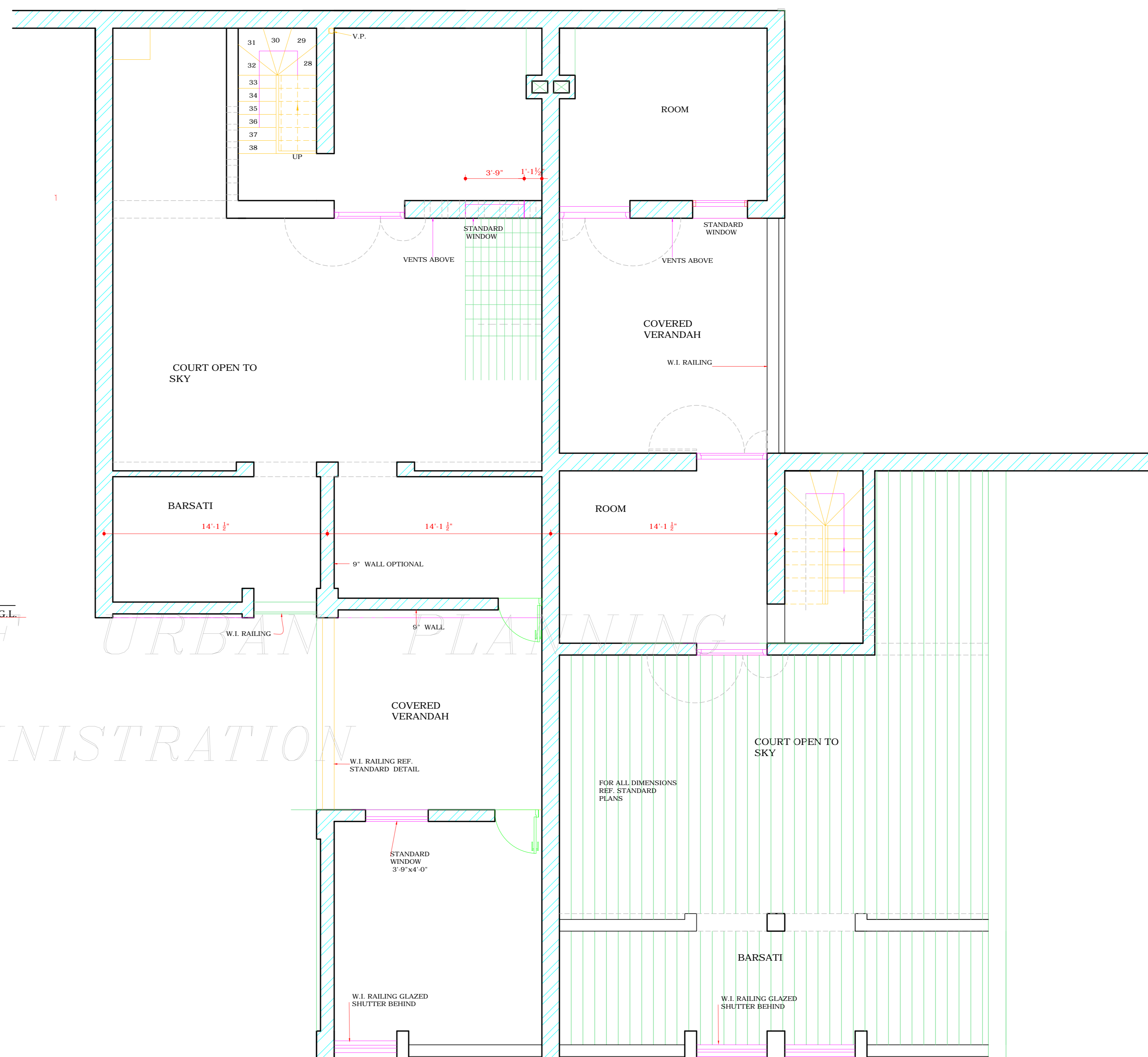
DRG. No.
17

JUNCTION BETWEEN SHOP
No. 21 & 24 AND LAV
BLOCK IN SECTOR - 19-D
CHANDIGARH

TERRACE FLOOR PLAN



SECTIONAL -ELEVATION
THROUGH SHOP NO 24
(FOR SECTION REF.
STANDARD)



TERRACE FLOOR PLAN

DISCLAIMER
THOUGH EVERY CARE HAS BEEN TAKEN TO PROVIDE THE CORRECT VERSION OF THE ARCHITECTURAL CONTROL ON THIS DIGITIZED (PDF) FORMAT, YET IN CASE OF ANY DISCREPANCY, THE MASTER COPY OF THE ARCHITECTURAL CONTROL APPLICABLE ON EACH SUCH SITE, AS AVAILABLE IN THE COMMERCIAL RECORD OF THE OFFICE OF CHIEF ARCHITECT OR HER/HIS INTERPRETATION WILL OVERRULE THE DIGITIZED FORMAT.