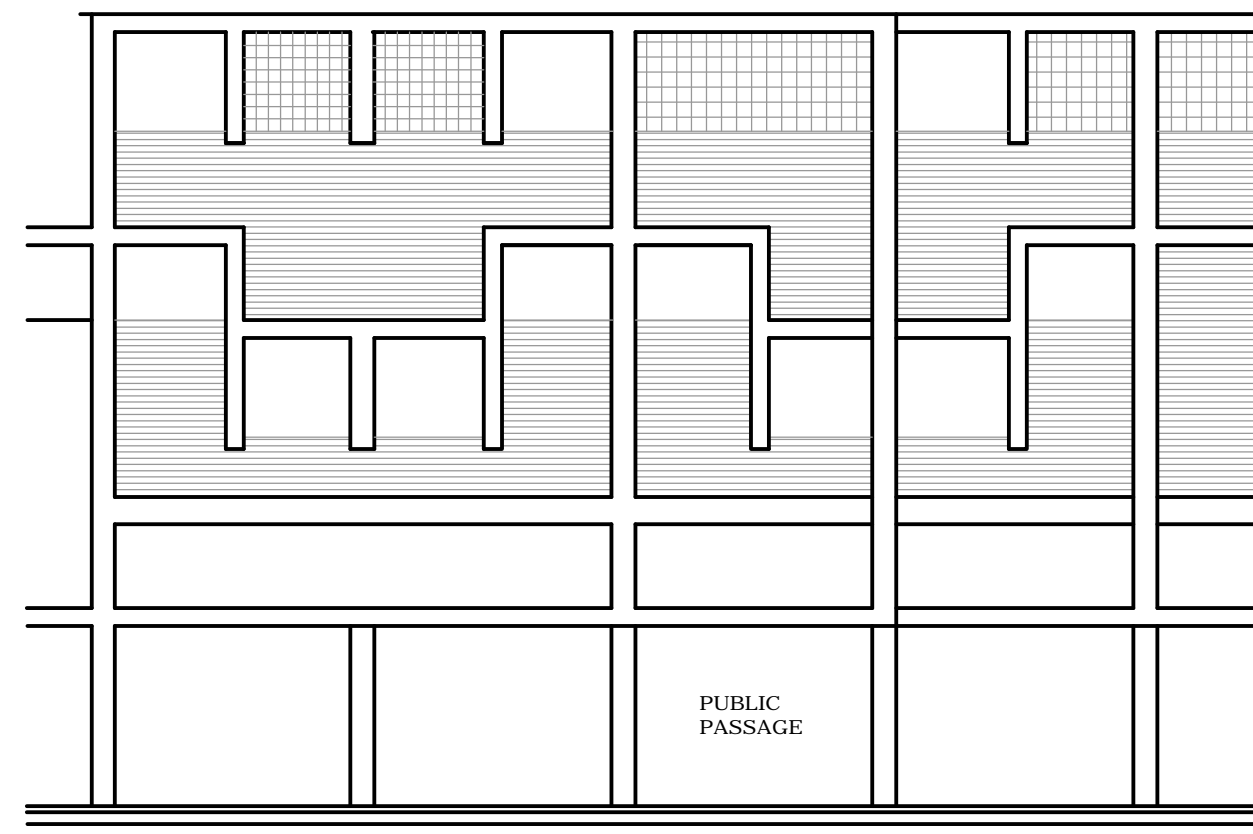
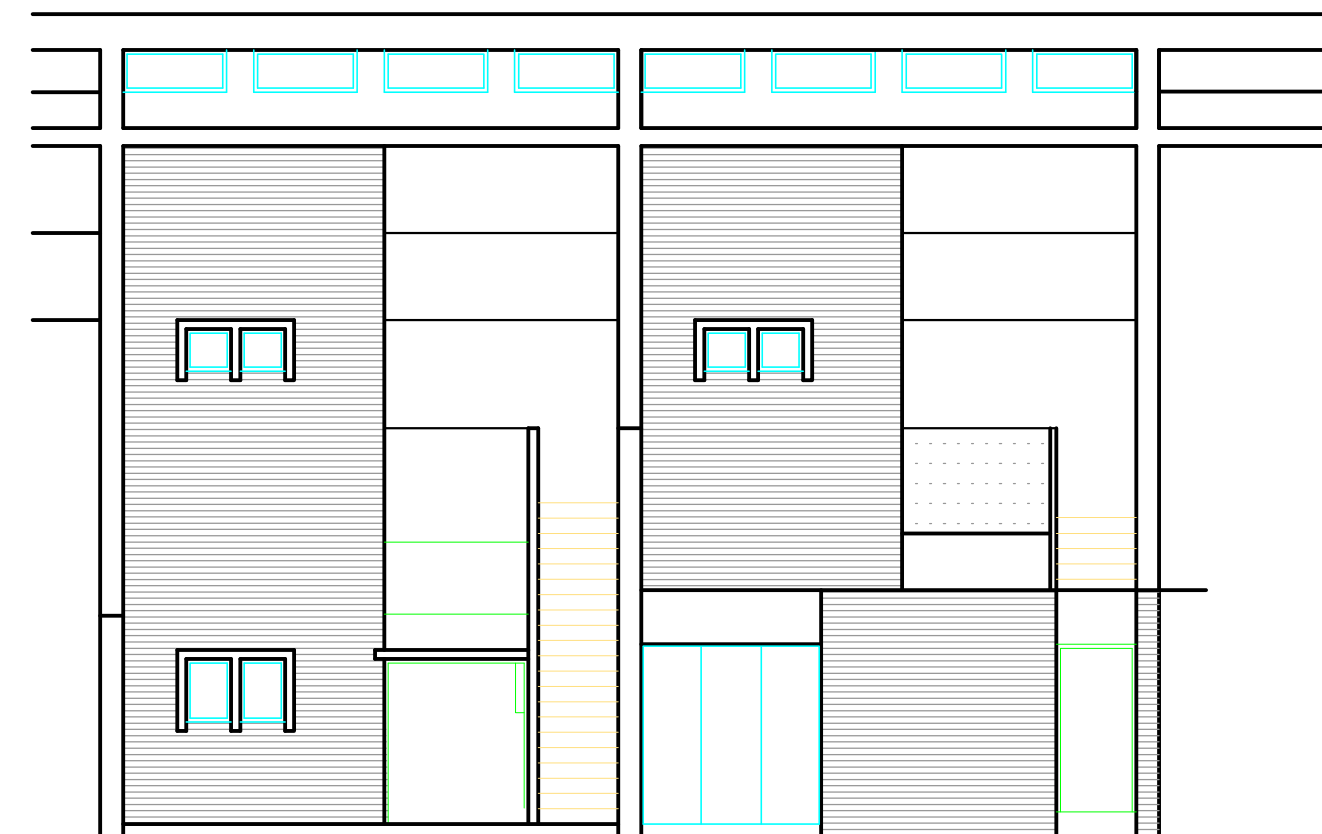


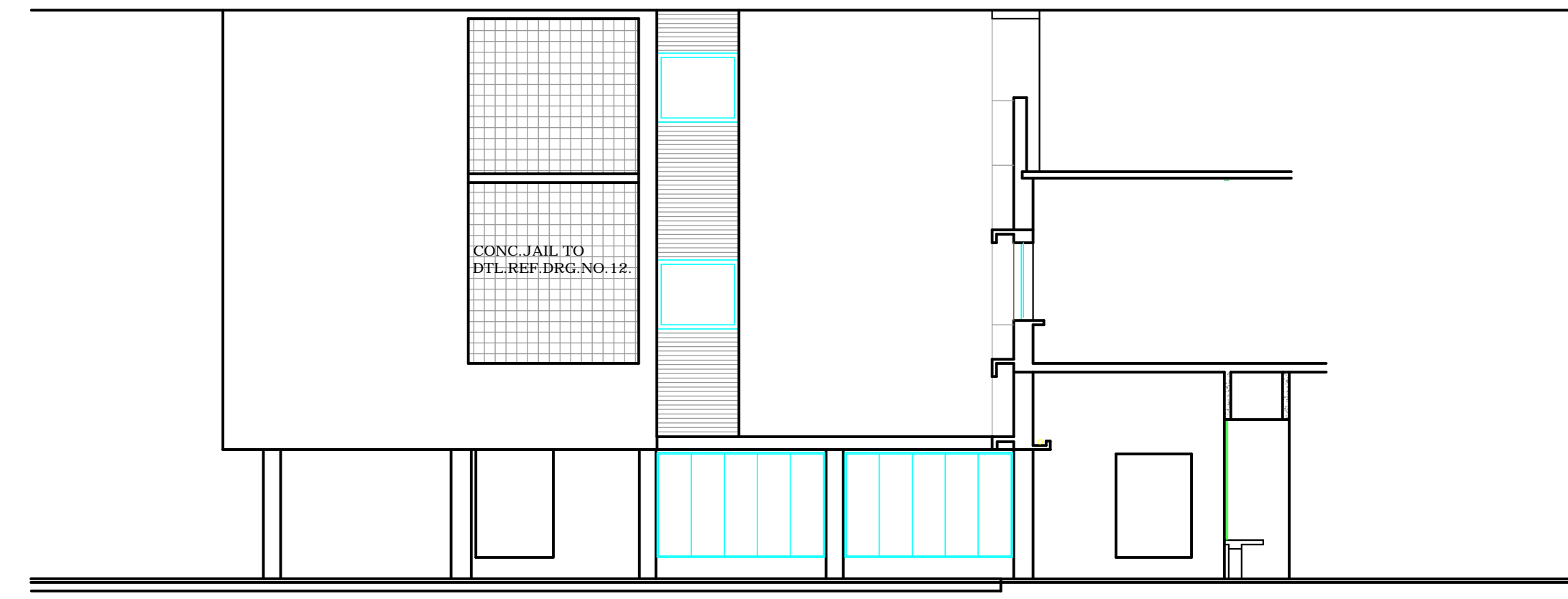
DEPARTMENT OF ARCHITECTURE



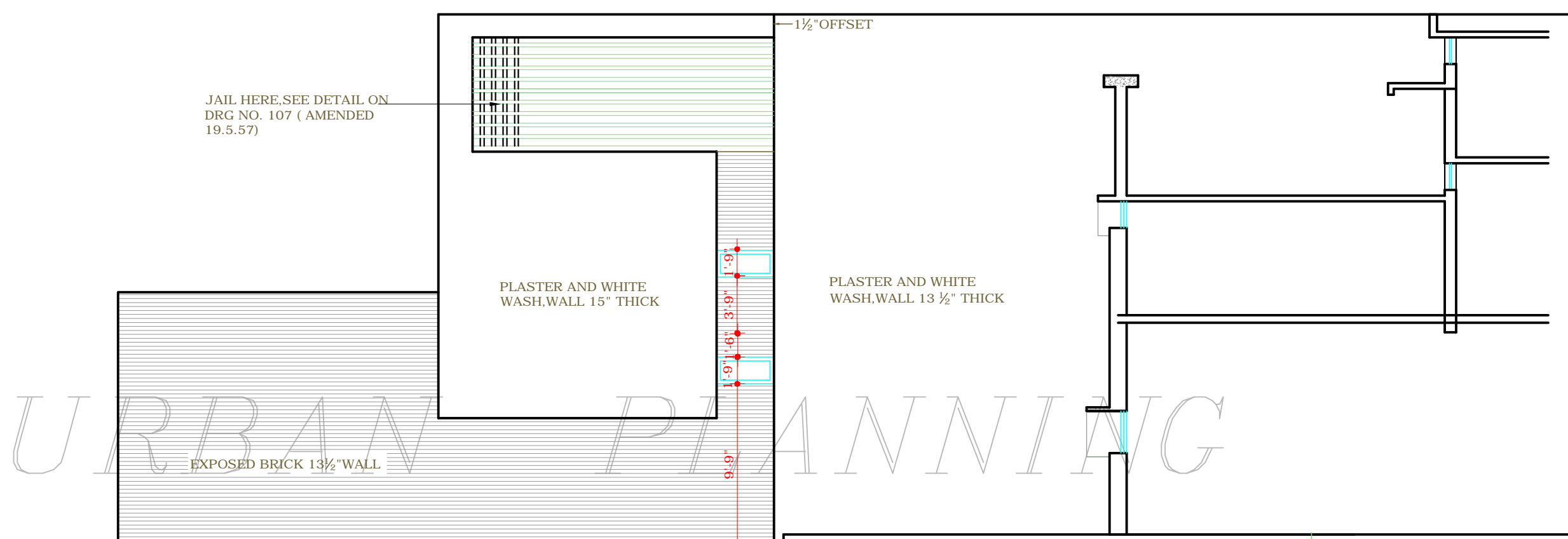
FRONT ELEVATION OF NO 11 12-13-14 BAYS



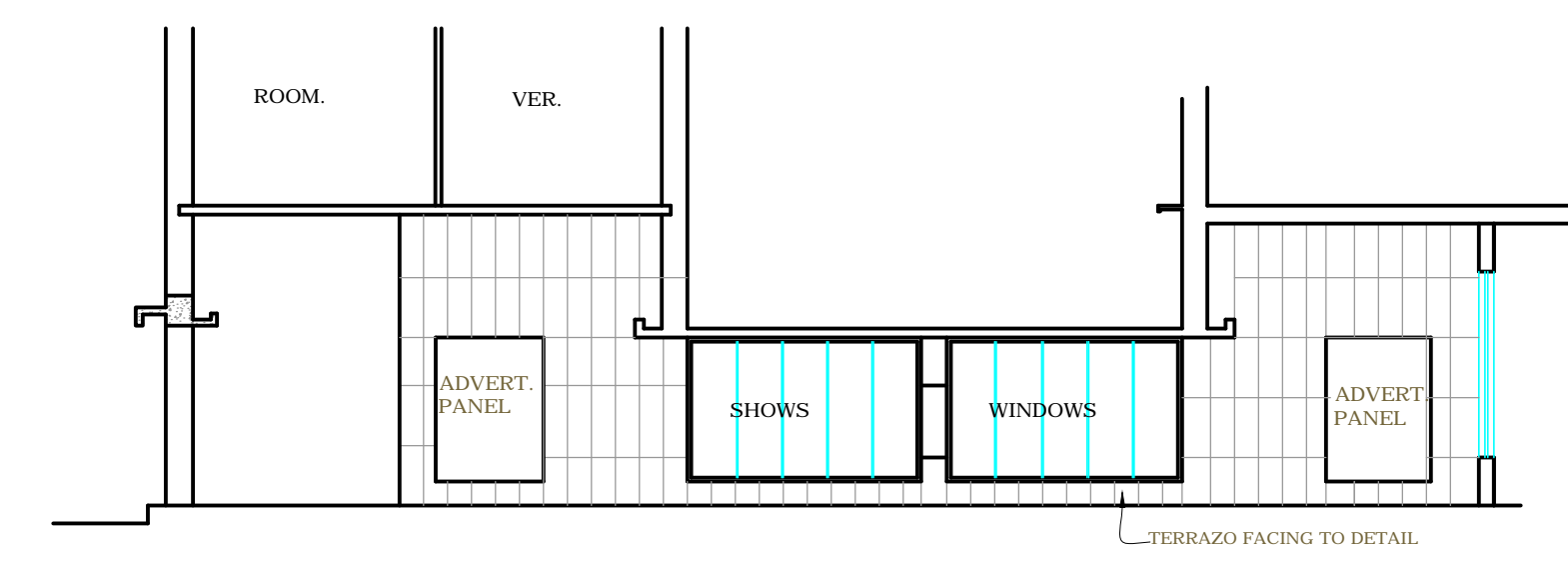
REAR SECTINAL ELEVATION AT E-E



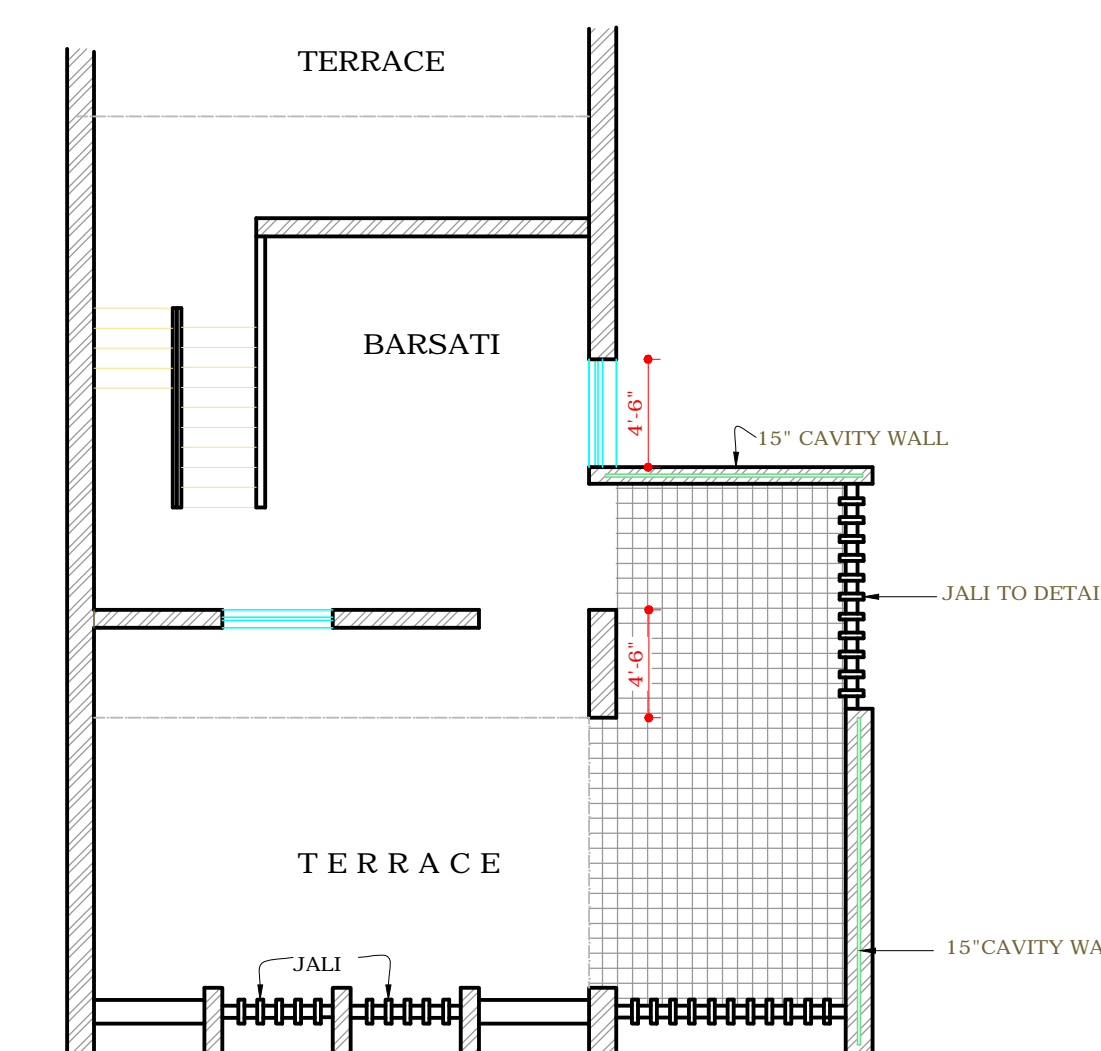
ELEVATION AT D-D



SECTIONAL ELEVATION AT C-C



LONG SECTION THRU PUBLIC PASSAGE AT A-A



CHIEF ADMINISTRATOR

ATTESTED

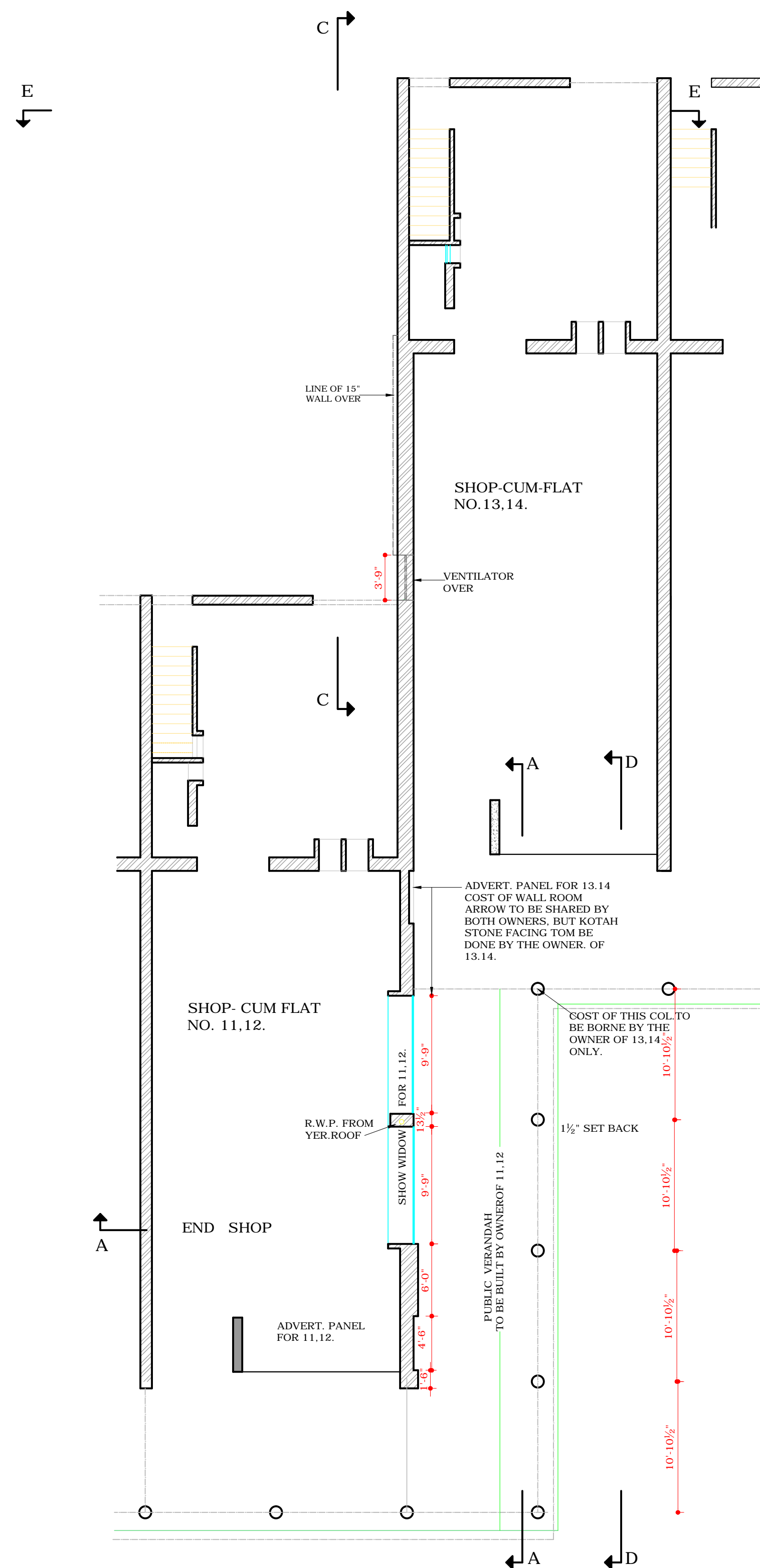
KUREKAR

31.5.72
ASTT. ARCHITECT.

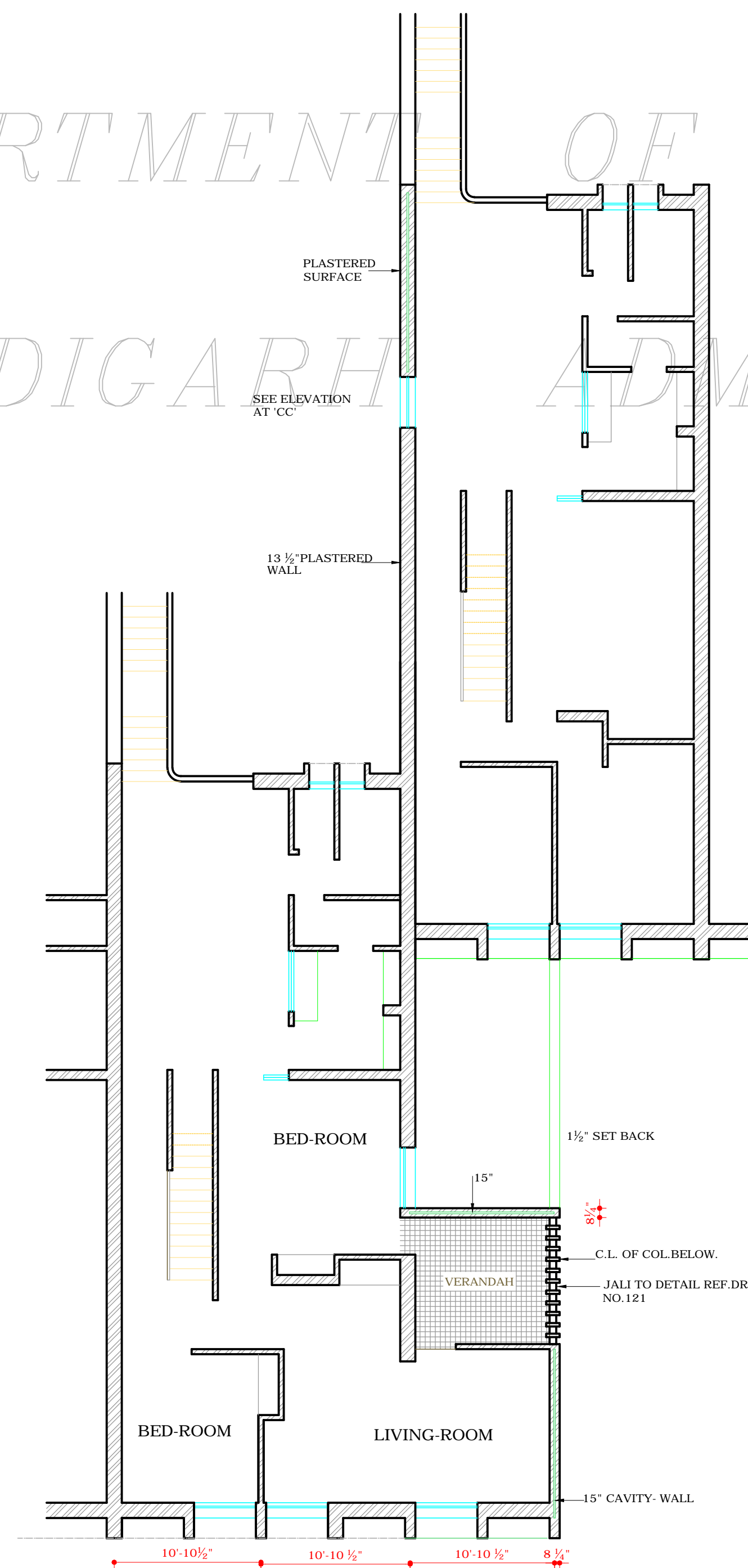
- NOTES
1. THIS DRAWING IS THE PROPERTY OF THE DEPTT. OF ARCHITECTURE AND MUST NOT BE ALTERED COPIED OR USED IN WHOLE OR IN PART WITHOUT THE PERMISSION OF THE DEPTT. IN WRITING.
 2. THIS DRG. SHOWS THE STAGGER BETWEEN SEMI-INDUSTRIAL SHOP-CUM-FLATS BAYS NO.11, 12 AND 13, 14 IN SECTOR-19C.
 3. FOR GENERAL DIMENSION AND OTHER INFORMATION REF. DRG. NO.107 AND OTHER DETAIL DRAWING ISSUED WITH THIS JOB.
 4. GENERAL NOTES ON DRG. NO.107 ALSO APPLY. TO THIS DRG.
- X. THIS DRG. IS TO BE READ ALONG WITH DRG. NO.122 JOB NO.4 FOR GENERAL DETAILS AND REAR COURTYARD COVERAGE.

THIS DRG. IS COMPUTERED FROM DRG NO.4 JOB NO 112

COPYRIGHT:
DEPARTMENT OF URBAN PLANNING
CHANDIGARH ADMINISTRATION



GROUND FLOOR PLAN



FIRST FLOOR PLAN

DISCLAIMER
THOUGH EVERY CARE HAS BEEN TAKEN TO PROVIDE THE CORRECT VERSION OF THE ARCHITECTURAL CONTROL ON THIS DIGITIZED (PDF) FORMAT. YET IN CASE OF ANY DISCREPANCY, THE MASTER COPY OF THE ARCHITECTURAL CONTROL, APPLICABLE ON EACH SUCH SITE, AS AVAILABLE IN THE COMMERCIAL RECORD OF THE OFFICE OF CHIEF ARCHITECT OR HER/HIS INTERPRETATION WILL OVERRULE THE DIGITIZED FORMAT.

S.NO.	DESCRIPTION
REVISION	
CHIEF- ARCHITECT	sd. P.JEANNERET SENIOR ARCHITECT
sd/J.A.PARKASH ARCHITECT	ASTT. ARCHITECT
OFFICE OF THE CHIEF ARCHITECT CHANDIGARH	
SCALE = 1/4" TO AN INCH EQUAL TO 1'-0"	DATE:
DRAWN BY SONIA	JOB NO. DRG. NO.
CHECKED BY:	4 112
SHOP-CUM-FLATS SEMI-INDUSTRIAL TYPE. DETAIL OF JUNCTION BETWEEN NO 11,12,&13,14 BAYS. SECTOR 19-C	
PLANS,ELEVATIONS AND SECTIONS	