

DEPARTMENT OF
ARCHITECTURE .U.T.

S.NO. NOTES

- THIS DRAWING IS THE PROPERTY OF DEPTT. OF ARCHITECTURE U.T. CHANDIGARH AND FORMERLY OF THE Pb. GOVT AND MUST NOT BE ALTERED, COPIED OR USED IN WHOLE OR IN PART WITHOUT THE PERMISSION OF THIS DEPTT. IN WRITING.
- THIS DRG. IS ACTUALLY TRACED FROM DRG. NO. 8 JOB NO. 220
NIRMAL KUMARI
24-2-73

NOTE:-
THIS DRAWING HAS BEEN COMPUTERISED ON
06-11-08 FROM DRG. NO. 8, JOB NO. 220

S.NO. DESCRIPTIONS DATE SIGN

REVISIONS

Sd/- S.L.VARMA 5.X.70 CHIEF ADMINISTRATOR	
Sd/- M.N.SHARMA 3.X.70 CHIEF ARCHITECT	Sd/- P.JENNERET SENIOR ARCHITECT
Sd/- A.PARKASH JUNIOR ARCHITECT	ASSTT. ARCHITECT

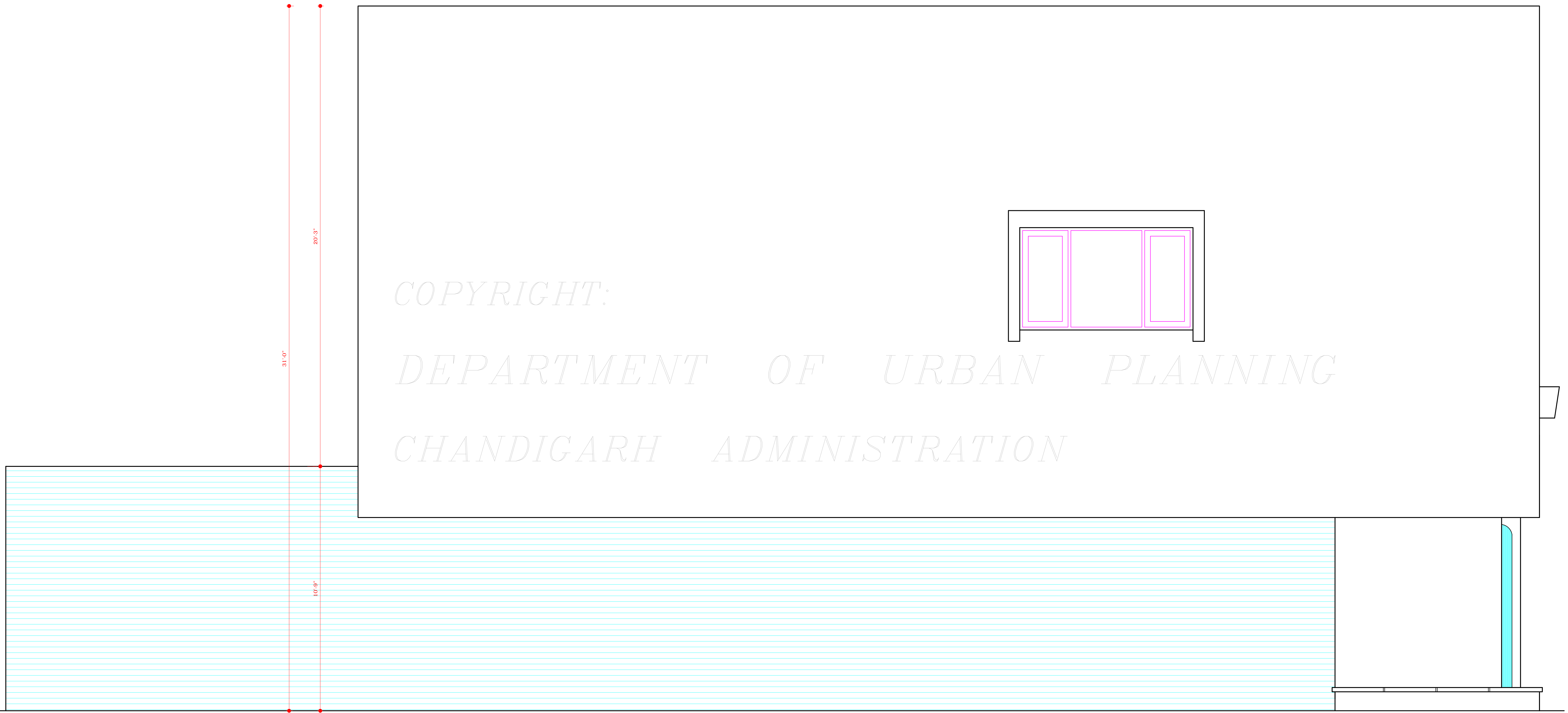
OFFICE OF THE CHIEF
ARCHITECT CHANDIGARH

SCALE - 1/2 INCH TO A FOOT DATE - 22-10-

DRAWN	DRG NO.	JOB NO.
REDRAWN NIRMAL KUMARI	8	220

DETAIL DRAWING OF
S.CUM-FLATS SECTOR 24

LEFT END ELEVATION



LEFT END ELEVATION

DISCLAIMER

THOUGH EVERY CARE HAS BEEN TAKEN TO PROVIDE THE CORRECT VERSION OF THE ARCHITECTURAL CONTROL ON THIS DIGITIZED (PDF) FORMAT, YET IN CASE OF ANY DISCREPANCY, THE MASTER COPY OF THE ARCHITECTURAL CONTROL APPLICABLE ON EACH SUCH SITE, AS AVAILABLE IN THE COMMERCIAL RECORD OF THE OFFICE OF CHIEF ARCHITECT OR HER/HIS INTERPRETATION WILL OVERRULE THE DIGITIZED FORMAT.

ATTESTED TRUE COPY
Sd/- KUREKAR
27.2.73
ASSTT. ARCHITECT