

CHANDIGARH

PROJECT

NOTES

- THIS DRG. IS THE PROPERTY OF THE DEPTT. OF ARCHITECTURE CHANDIGARH U.T. AND FORMERLY OF THE GOVT. OF PUNJAB AND MUST NOT BE ALTERED COPIED OR USED IN WHOLE OR IN PART WITHOUT THE PERMISSION OF THIS DEPTT. IN WRITING.
- THIS DRG. IS ACTUALLY TRACED FROM DRG. No. 2 OF JOB No. 208 ON DATED 18.XI.72. Sd. 18/11/72

NOTE:- THIS DRAWING HAS BEEN COMPUTERISED ON 20-08-09 FROM DRG. No. 2 JOB No. 208

S.No.	DESCRIPTION	DATE/SIGN
REVISIONS		
Sd/- P. JEANNERET 5.X.60	CHIEF ARCHITECT	SENIOR ARCHITECT
Sd/- ADITYA PARKASH 4.X.60	ARCHITECT	ASSTT. ARCHITECT

REVISIONS

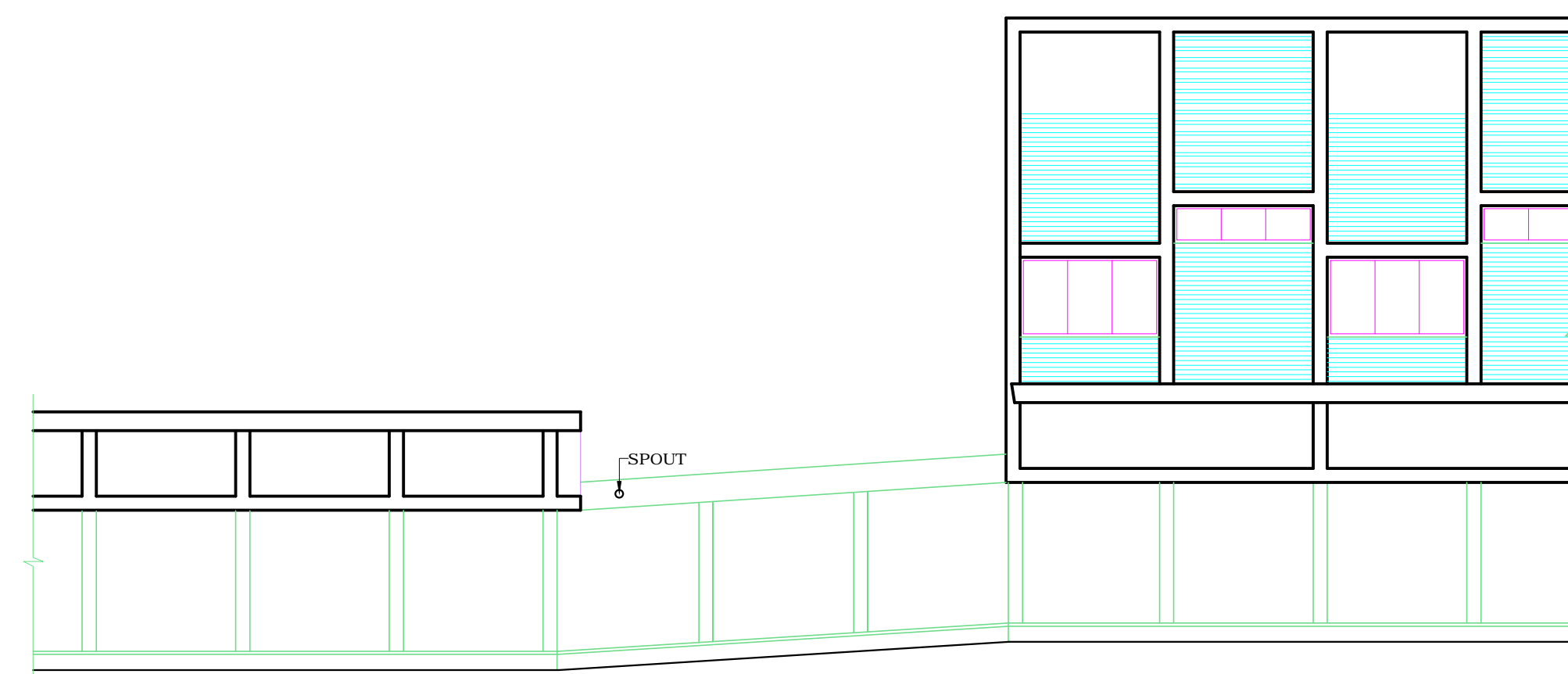
Sd/- P. JEANNERET 5.X.60	CHIEF ARCHITECT	SENIOR ARCHITECT
Sd/- ADITYA PARKASH 4.X.60	ARCHITECT	ASSTT. ARCHITECT

OFFICE OF THE CHIEF ARCHITECT CHANDIGARH. U.T.

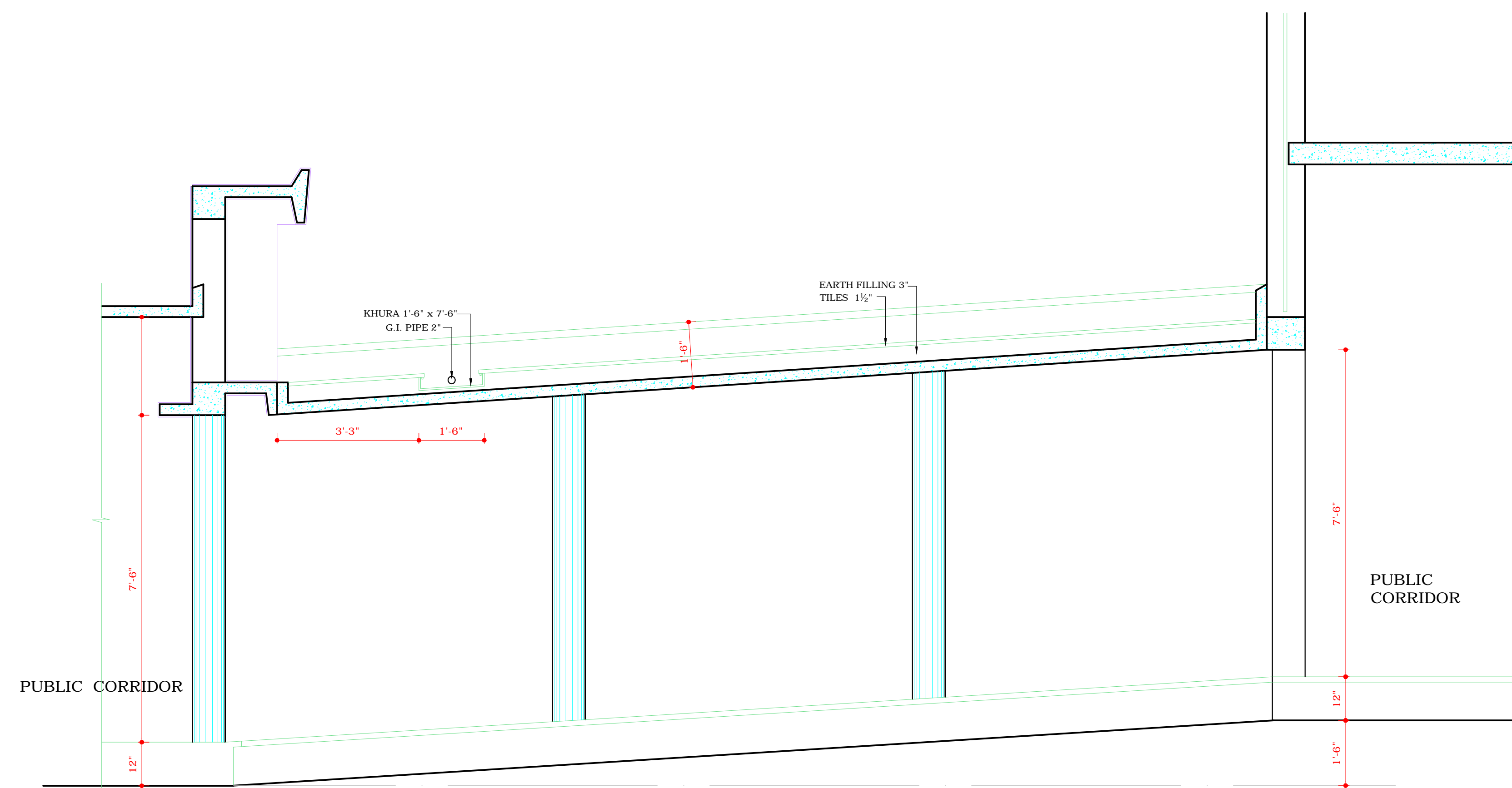
SCALE : 8 FEET TO AN INCH DATE: 23.9.60

DRAWN SADHU SINGH	DRG. No.	JOB No.
Sd/- Nov. 1972	2	208

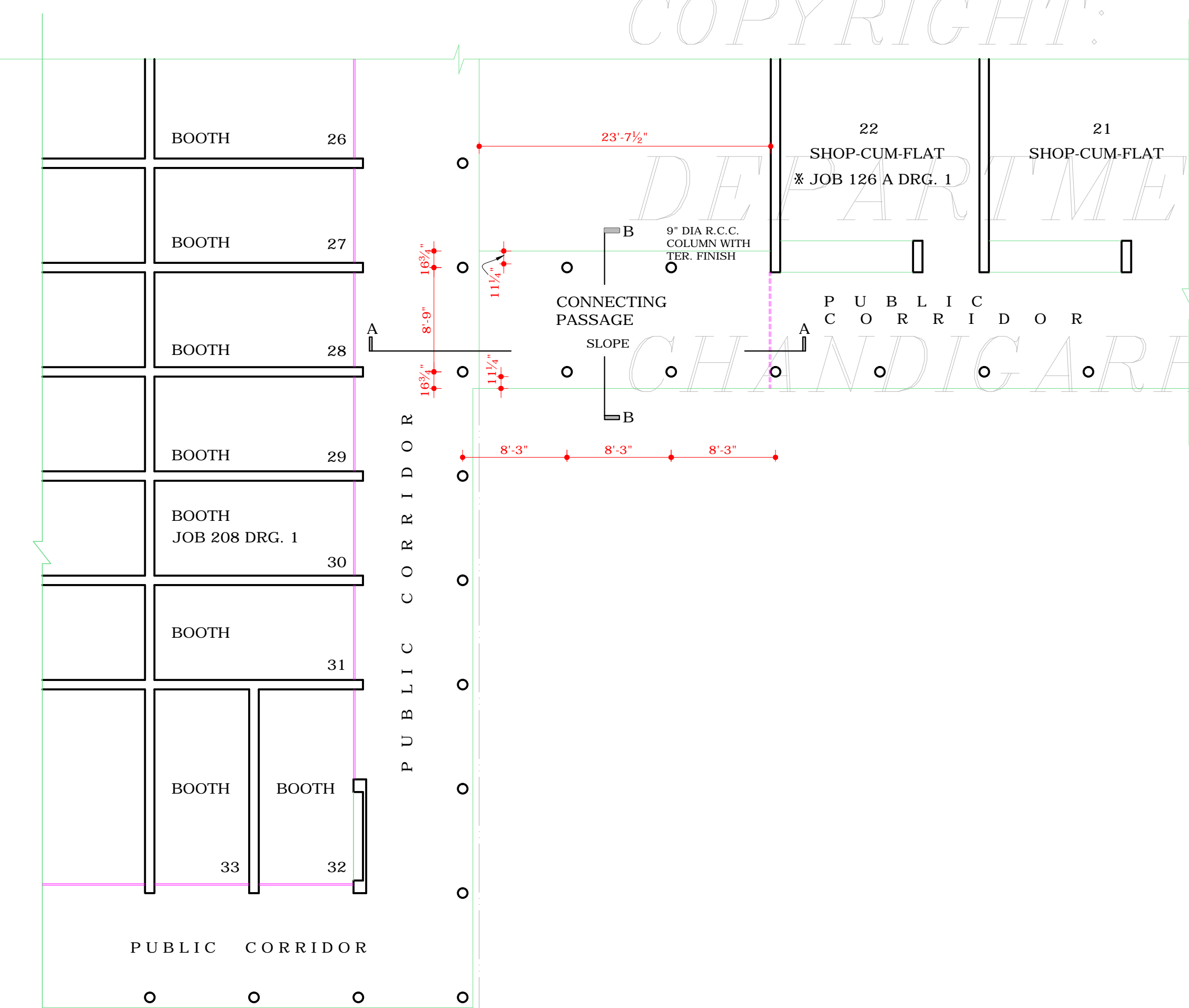
CONNECTING PASSAGE BETWEEN SHOP-CUM FLAT No. 22 AND BOOTH No. 28 IN SECTOR- 20-A



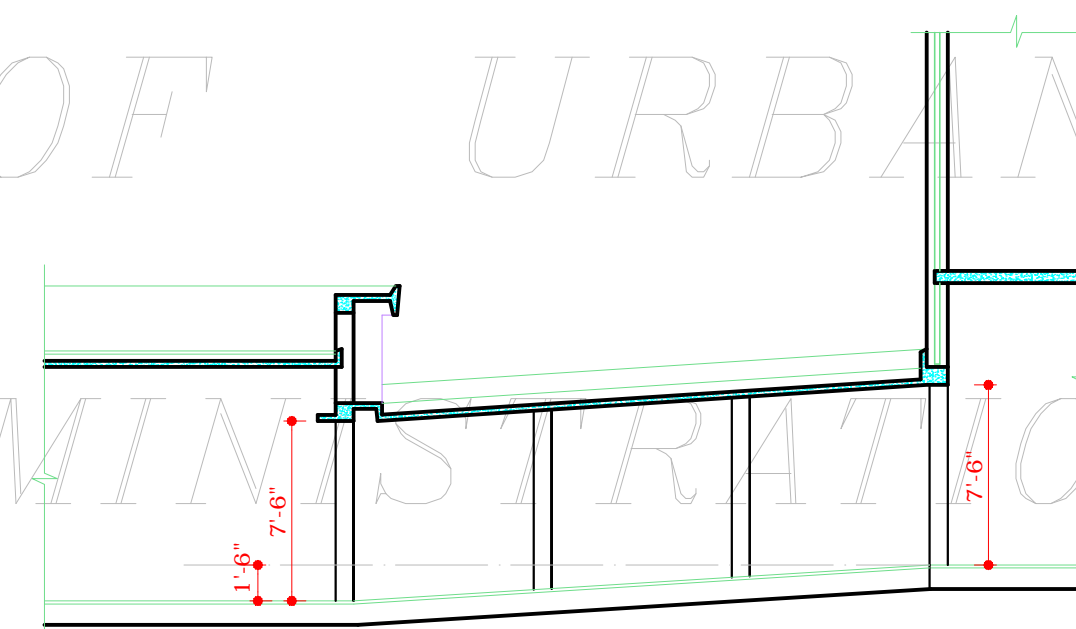
FRONT ELEVATION



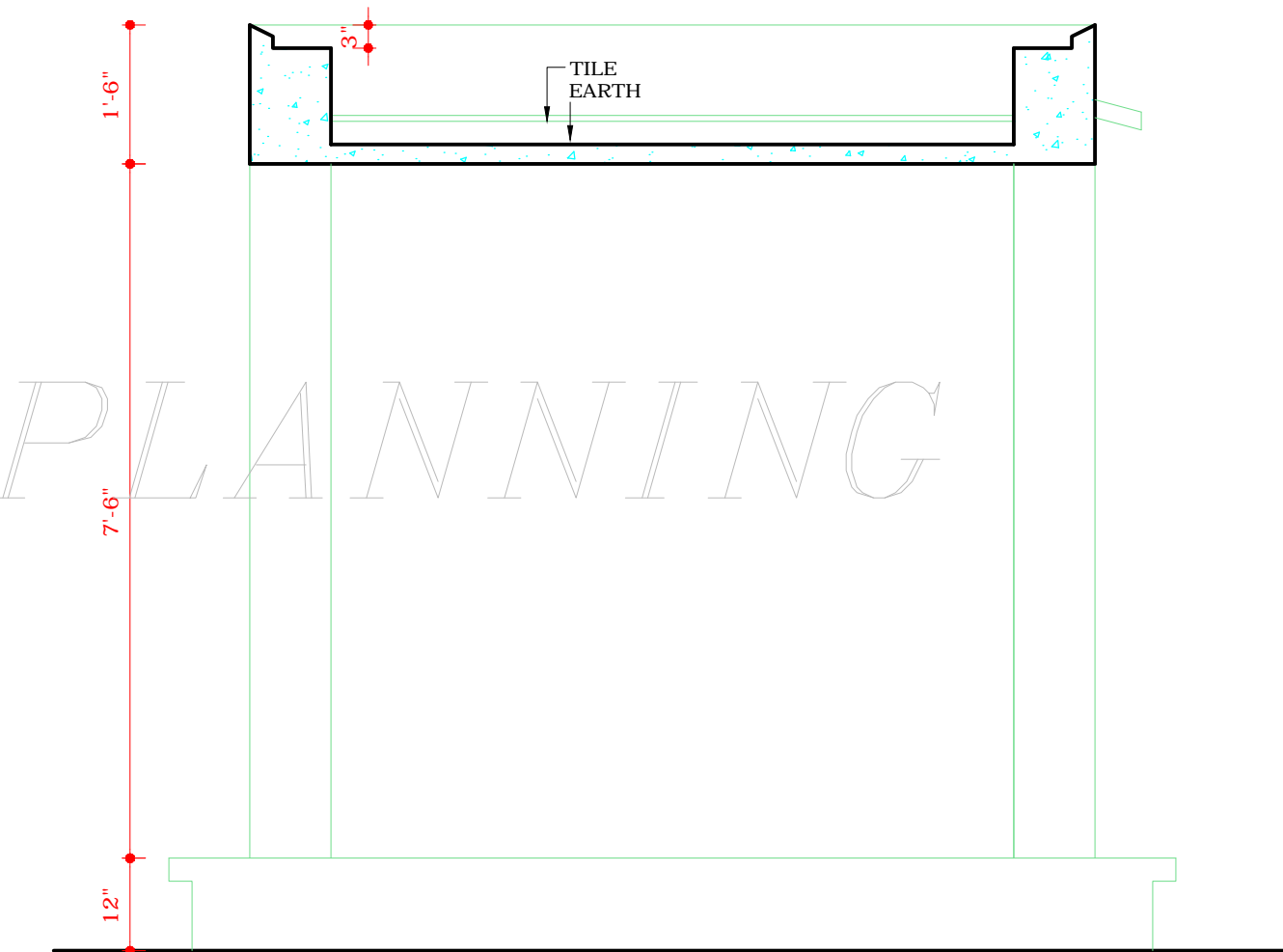
SECTION AA' (1/2" DETAIL)



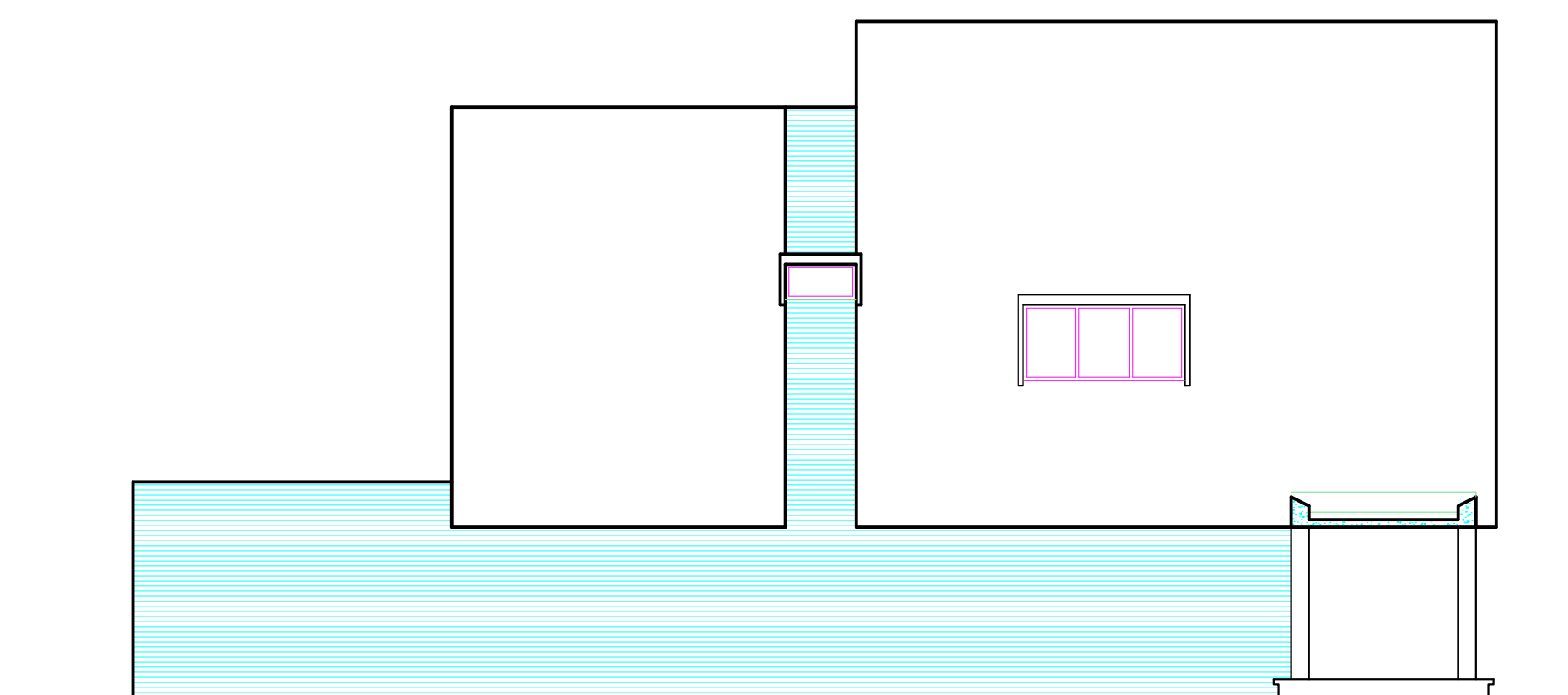
PLAN



SECTION A A' (1/2" DETAIL)



SECTION B B' (1/2" DETAIL)



SECTIONAL ELEVATION B B'

DISCLAIMER

THOUGH EVERY CARE HAS BEEN TAKEN TO PROVIDE THE CORRECT VERSION OF THE ARCHITECTURAL CONTROL ON THIS DIGITIZED (PDF) FORMAT. YET IN CASE OF ANY DISCREPANCY, THE MASTER COPY OF THE ARCHITECTURAL CONTROL APPLICABLE ON EACH SUCH SITE, AS AVAILABLE IN THE COMMERCIAL RECORD OF THE OFFICE OF CHIEF ARCHITECT OR HER HIS INTERPRETATION WILL OVERRULE THE DIGITIZED FORMAT.

ATTENDED TRUE COPY

Sd/-
M.U. KUREKAR
ASSTT. ARCHITECT