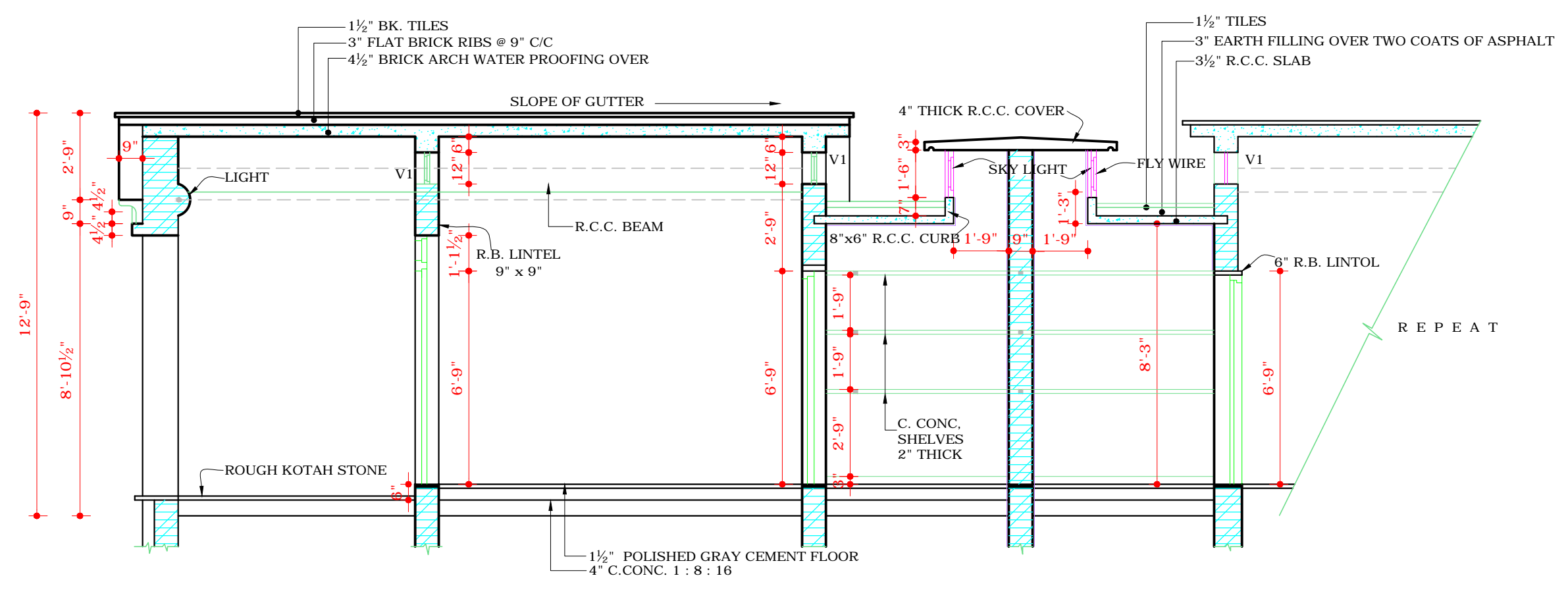
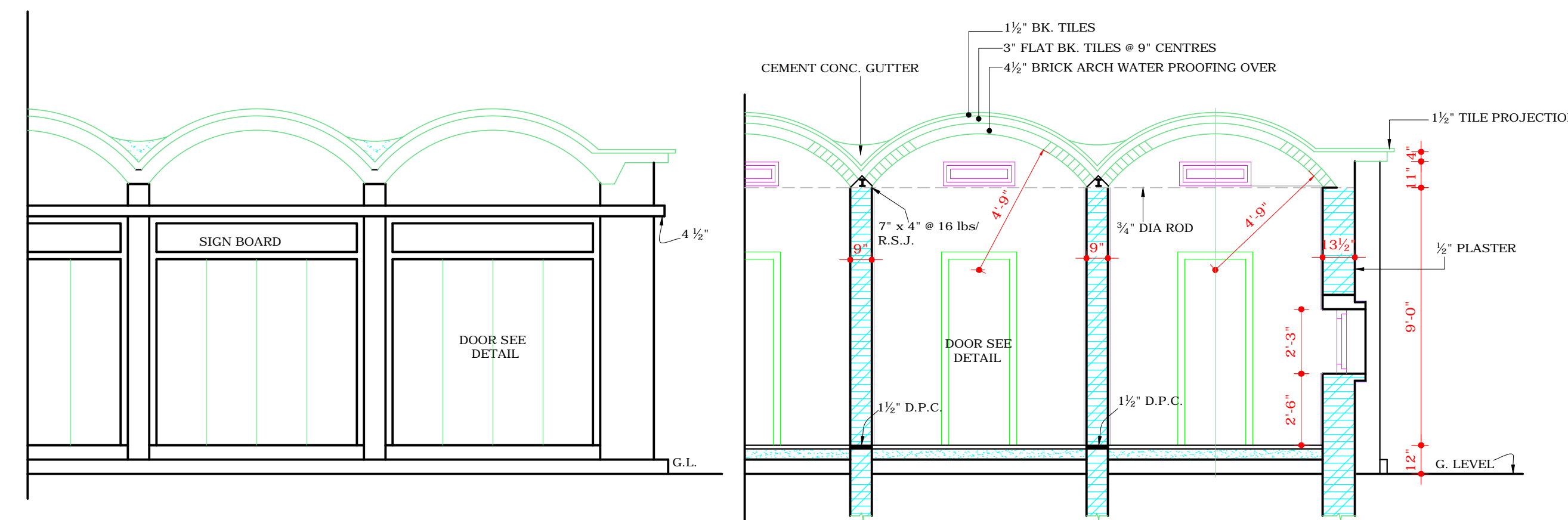
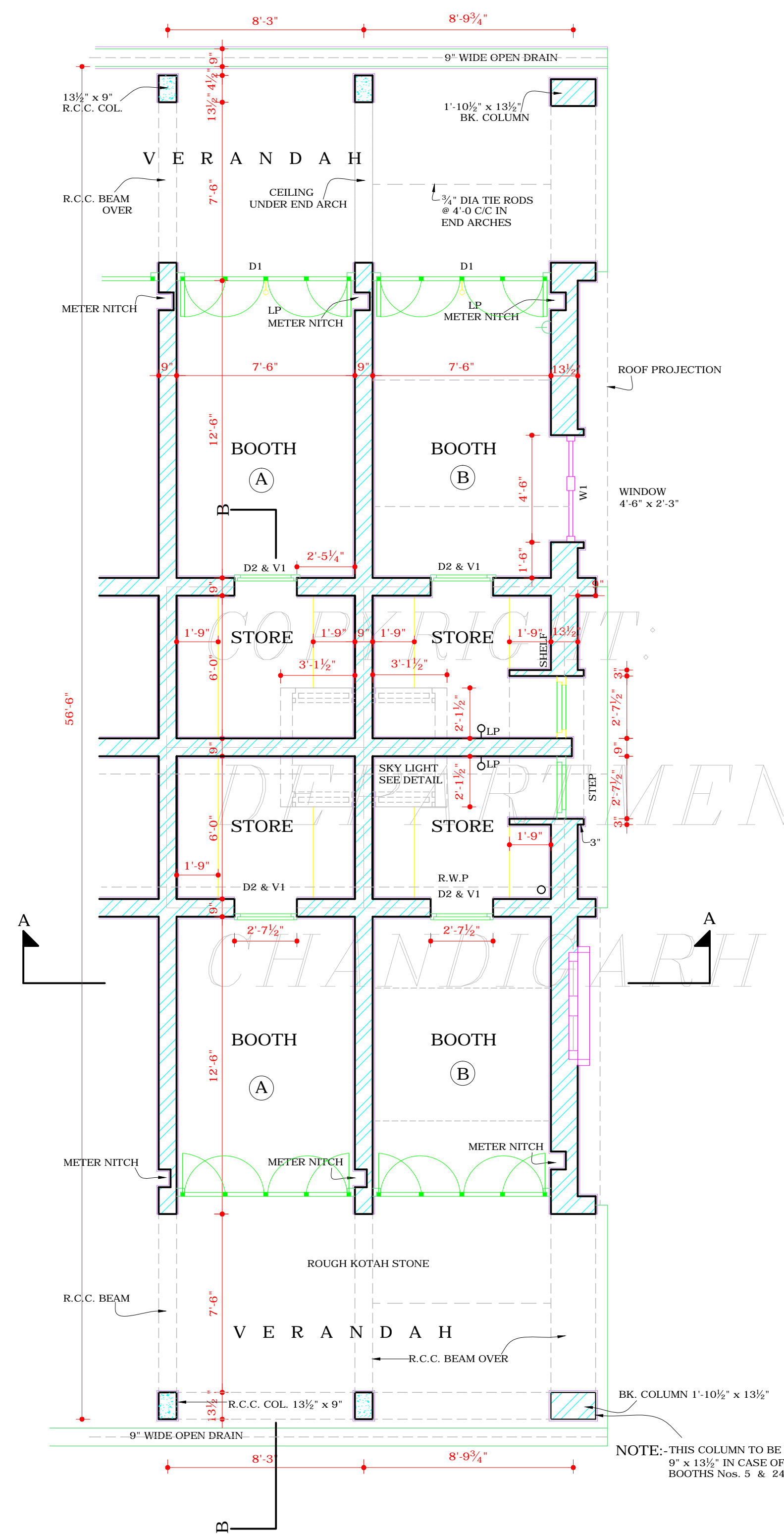


DEPARTMENT OF
ARCHITECTURE
CHANDIGARH

VARIATIONS

NOTES.

- ① THE RODS MUST BE PROVIDED IN THE INTERMEDIATE BOOTHS AS SHOWN FOR END BOOTHS. IN CASE THE ADJACENT BOOTHS ARE NOT CONSTRUCTED & REMOVED AFTER THE ADJACENT BOOTHS ARE COMPLETED.
- ② TYPE (A) TO BE ADOPTED BY HOLDERS OF PLOT Nos. 6 TO 13 & 16 TO 23.
TYPE (B) TO BE ADOPTED BY HOLDERS OF PLOT Nos. 5, 4, 15 & 24.
- ③ FOR DETAILS REFER DRG No. 2 & 3.
- ④ FOUNDATIONS TO BE CHECKED UP FROM C.E.S. OFFICE.



DISCLAIMER

THOUGH EVERY CARE HAS BEEN TAKEN TO PROVIDE THE CORRECT VERSION OF THE ARCHITECTURAL CONTROL ON THIS DIGITIZED (PDF) FORMAT. YET IN CASE OF ANY DISCREPANCY, THE MASTER COPY OF THE ARCHITECTURAL CONTROL APPLICABLE ON EACH SUCH SITE, AS AVAILABLE IN THE COMMERCIAL RECORD OF THE OFFICE OF CHIEF ARCHITECT OR HER/HIS INTERPRETATION WILL OVERRULE THE DIGITIZED FORMAT.

Sd/ S.D. SHARMA
3/7/03
ARCHITECT CHIEF ARCHITECT

NOTE:
THIS DRAWING IS THE COMPUTERISED
REPRODUCTION OF ORIGINAL DRG. No.1
JOB No. 52 DATED: 25-02-09

SCALE = 1/4" TO A FOOT

CHECKED R.S. BASSI	DRAWN DIDAR	DATE - 16-06-63
-----------------------	----------------	--------------------

DRG. No. 1	JOB No. 52	SET OF 4
---------------	---------------	-------------

BOOTH'S TYPE
'A' & 'B' SECTOR 23
PLAN ELEVATION
& SECTIONS