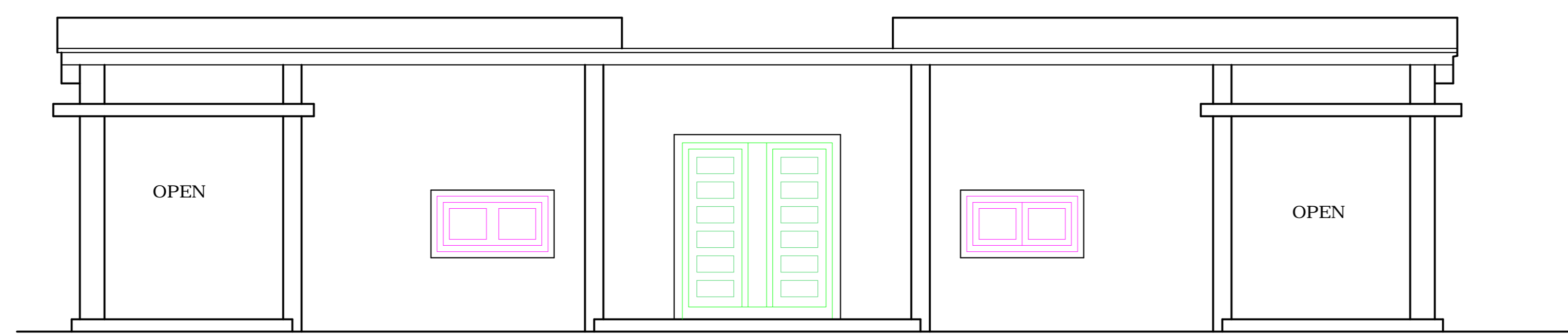


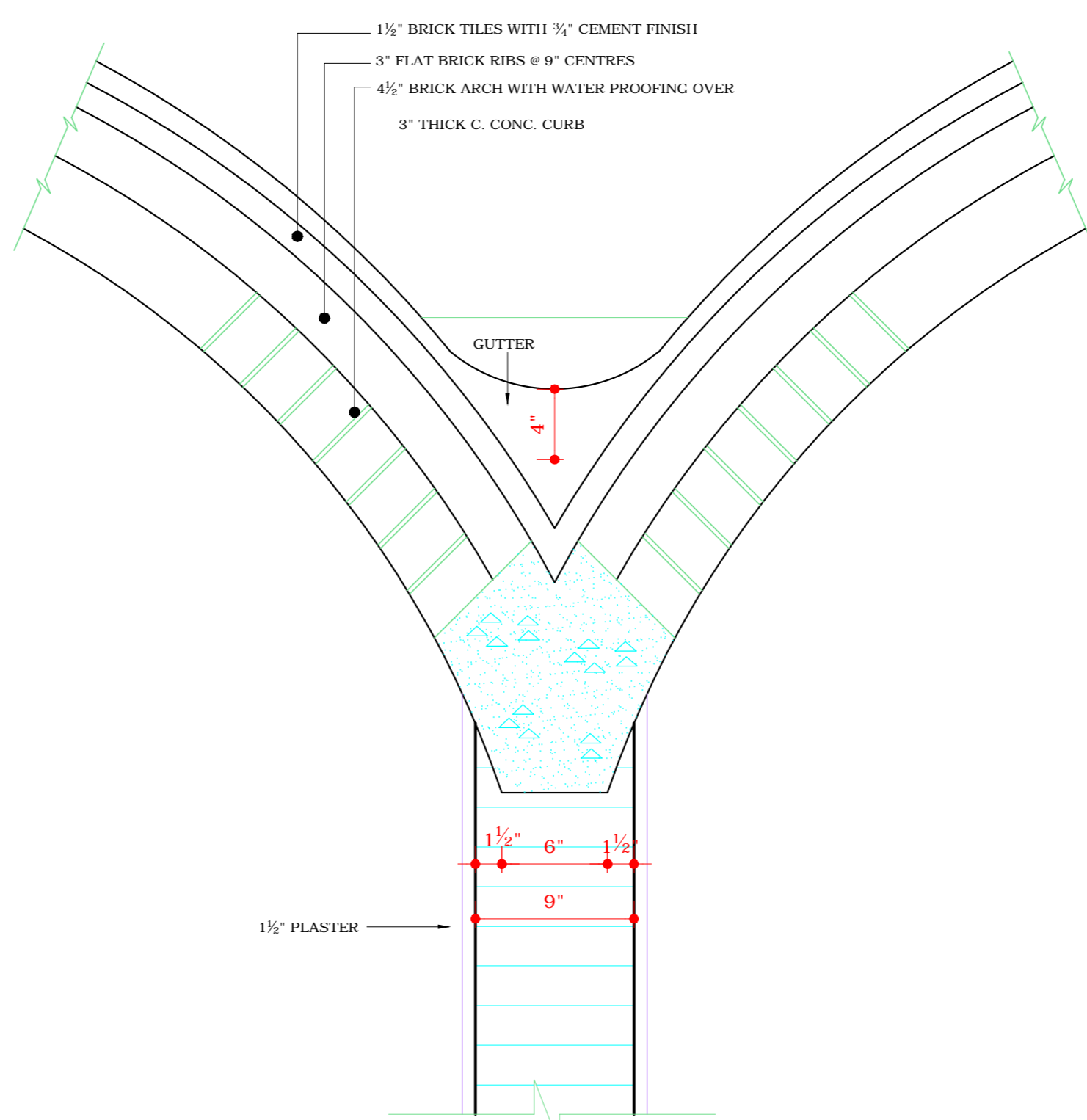
DEPARTMENT OF ARCHITECT PB. CHANDIGARH.

NOTES:-

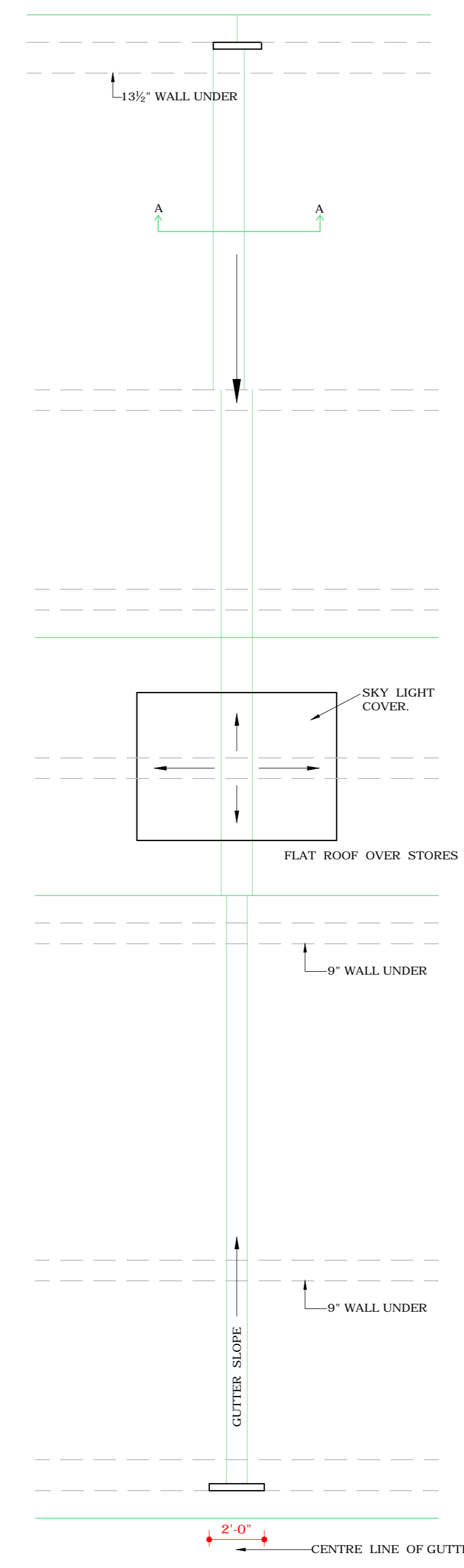
- 1 THE ROAD MUST BE PROVIDED IN THE INTERMEDIATE BOOTHS.
- 2 (AS SHOWN IN THE END BOOTH).
- 3 IN CASE THE ADJACENT BOOTHS ARE NOT CONSTRUCTED & REMOVED AFTER THE ADJACENT BOOTHS ARE COMPLETED.
- 4 TYPE 'A' TO BE ADOPTED BY HOLDERS OF PLOT Nos. 6 TO 13 & TYPE 'B' TO BE ADOPTED BY HOLDERS OF PLOT Nos. 14, 15, & 24.
- 5 FOR PLAN REFER. DRG. No. 1 & FOR DETAILS OF SKY LIGHT VENTS REFER DRG. No. 3.
- 6 FOUNDATION TO BE CHECKED UP FROM C. E. OFFICE.
- 7 LIGHT SWITCHES TO BE AT 4'-0" HEIGHT.
- 8 BRACKET LIGHT IN BOOTH TO BE AT 9'-0" HEIGHT.
- 9 BRACKET LIGHT IN STORE TO BE AT 7'-0" HEIGHT.
- 10 LIGHT IN VERANDAH TO BE AT 9'-0" HEIGHT.



END ELEVATION FOR TYPE (B)



1 1/2" DETAIL OF GUTTER AT A.A. FOR TYPE (A & B)

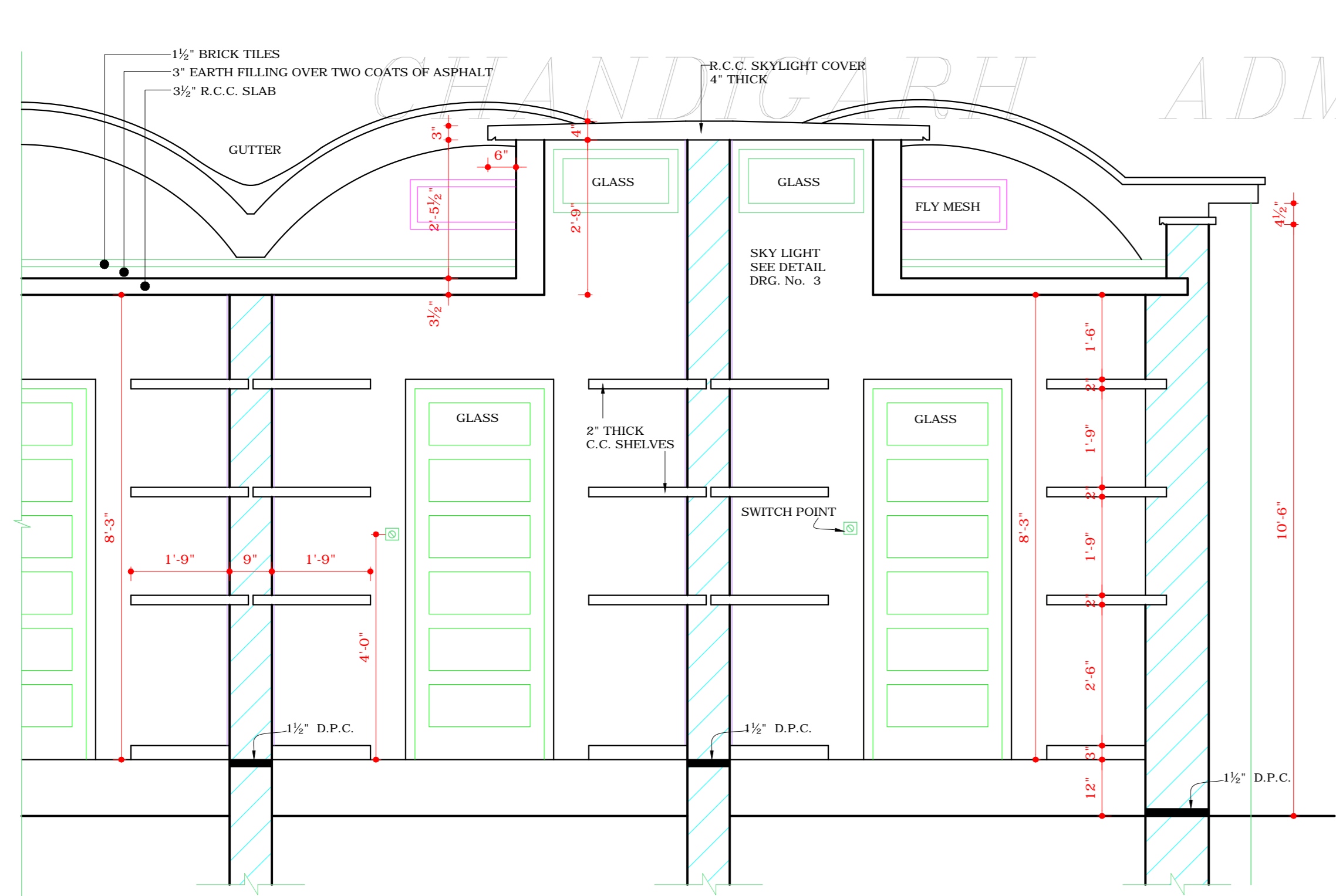


PART ROOF PLAN FOR TYPE A & B

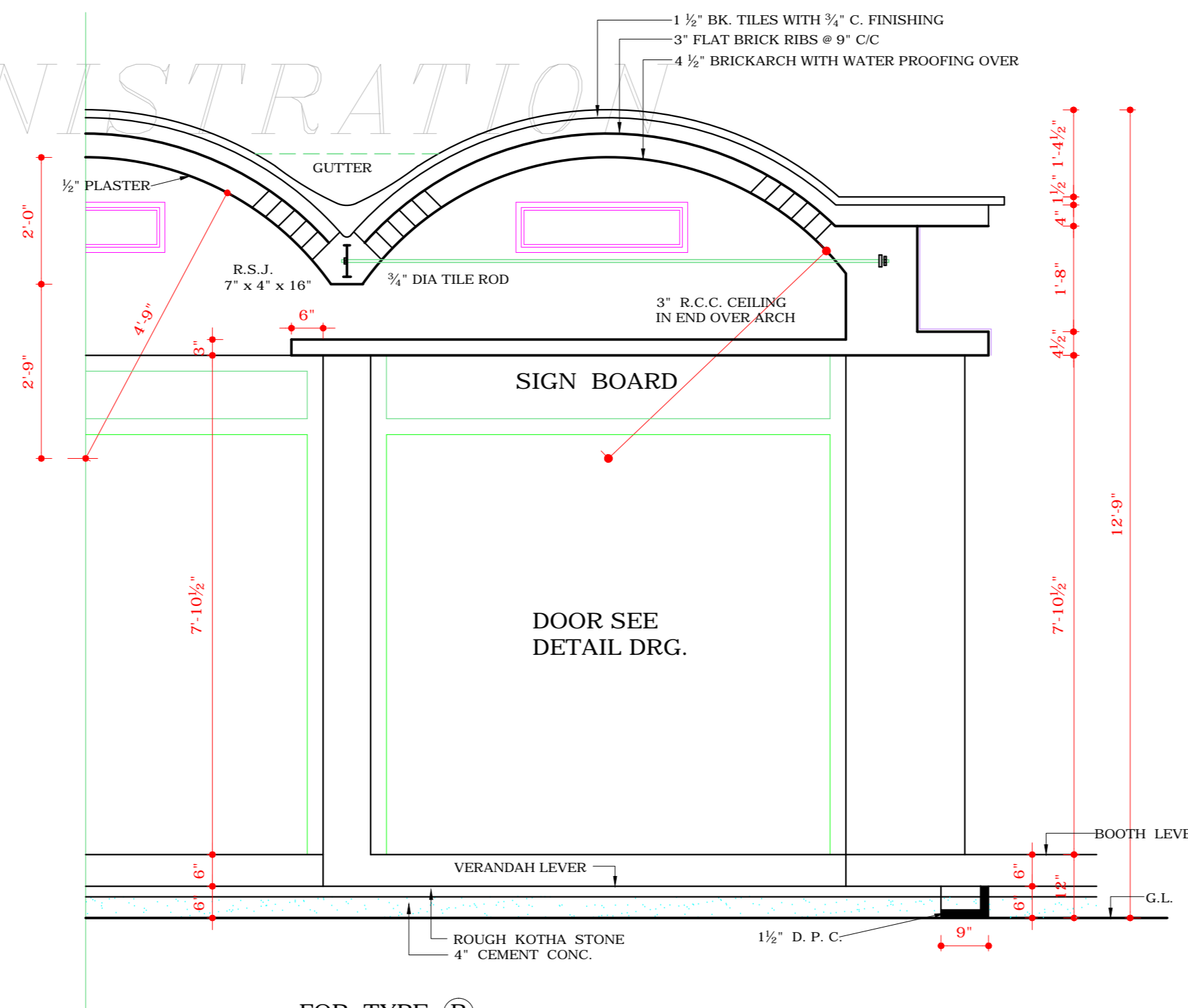
COPYRIGHT:

DEPARTMENT OF URBAN PLANNING

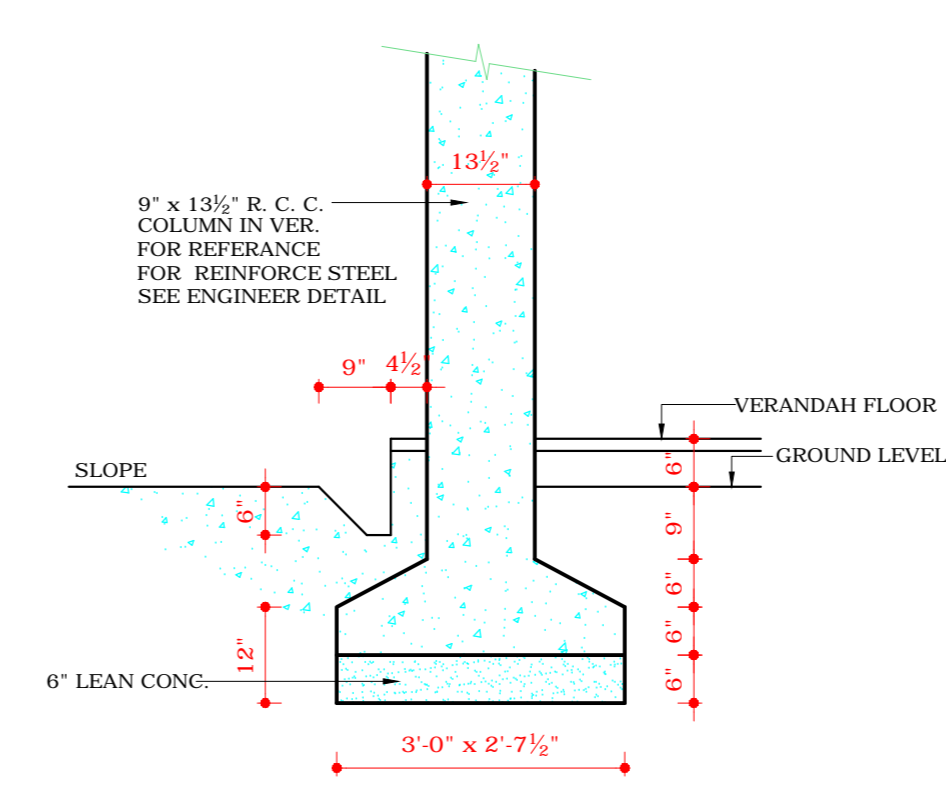
CHANDIGARH ADMINISTRATION



CROSS SECTION THROUGH STORES FOR TYPE A FOR TYPE B



CROSS SECTION THROUGH VERANDAH OF END BOOTH FOR TYPE (B)



DISCLAIMER
THOUGH EVERY CARE HAS BEEN TAKEN TO PROVIDE THE CORRECT VERSION OF THE ARCHITECTURAL CONTROL ON THIS DIGITIZED (PDF) FORMAT. YET IN CASE OF ANY DISCREPANCY THE MASTER COPY OF THE ARCHITECTURAL CONTROL APPLICABLE ON EACH SUCH SITE, AS AVAILABLE IN THE COMMERCIAL RECORD OF THE OFFICE OF CHIEF ARCHITECT OR HER/HIS INTERPRETATION WILL OVERRULE THE DIGITIZED FORMAT.

NOTE: THIS DRAWING IS THE COMPUTERISED REPRODUCTION OF ORIGINAL DRG. No. 2 JOB NO. 52 DATED 23-02-09

SCALE = 1/2" TO A FOOT

CHECKED R.S. BASSI	DRAWN DIDAR	DATE - 16-06-63
DRG No. 2	JOB No. 52	SET OF 4

BOOTHS TYPE
'A' & 'B' SECTOR 23
ELEVATION & SECTIONS