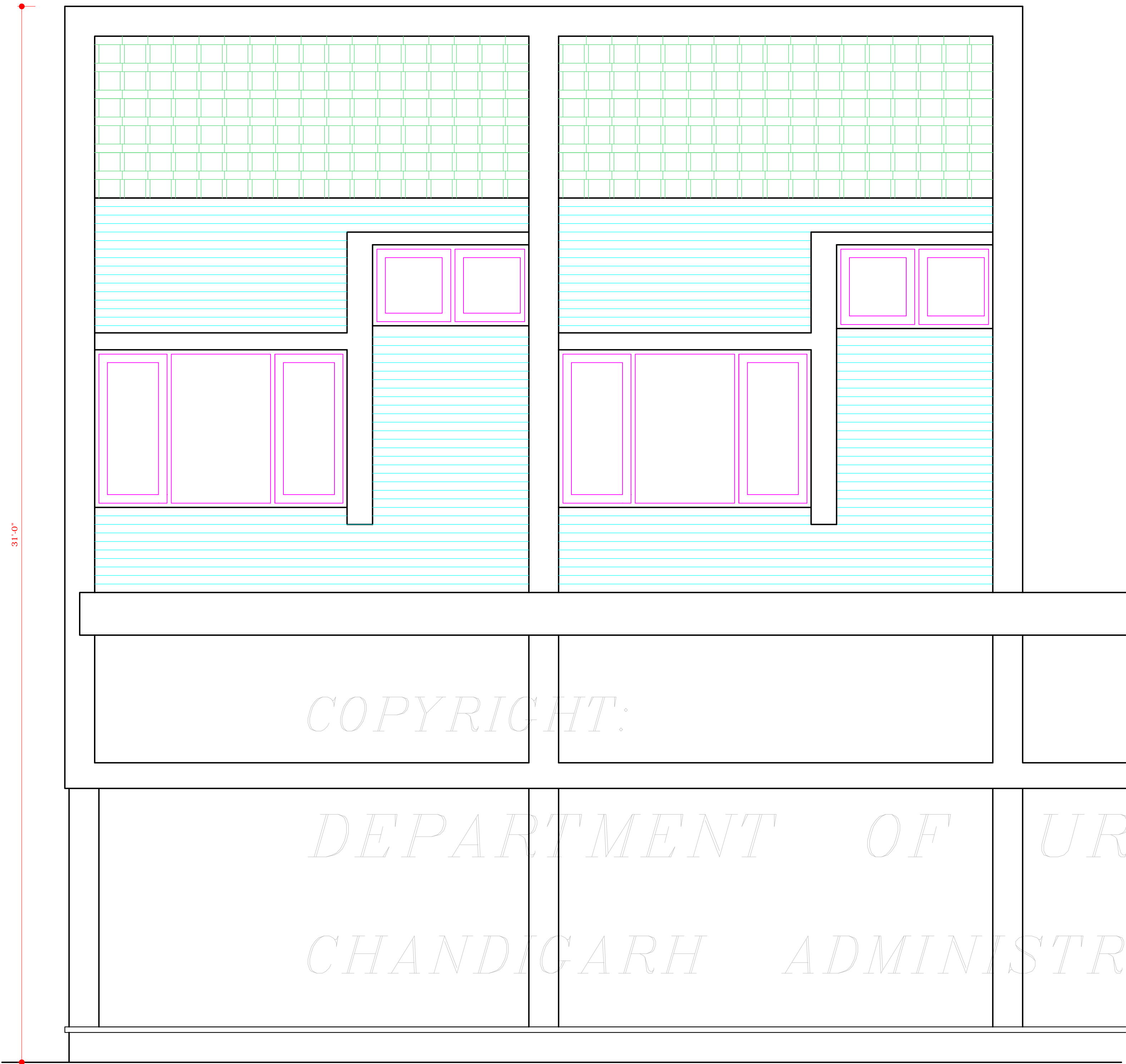


DEPARTMENT OF ARCHITECTURE

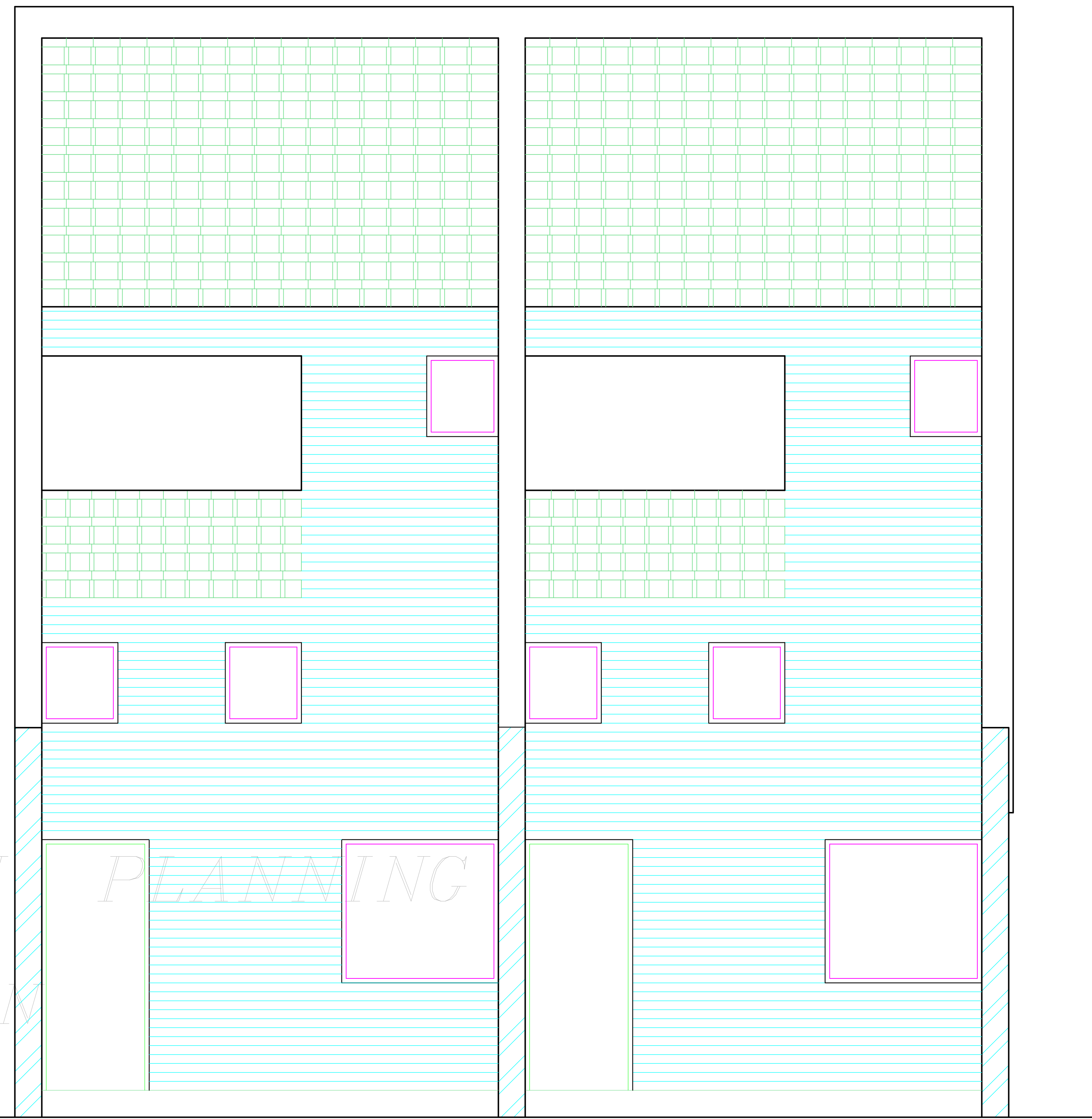
THIS DRAWING IS THE PROPERTY OF THE DEPTT. OF ARCHITECTURE CHANDIGARH U.T. AND FORMERLY THE GOVT. OF PUNJAB AND MUST NOT BE ALTERED, COPIED OR USED IN WHOLE OR IN PART WITHOUT THE PERMISSION OF THIS DEPTT IN WRITING.

THIS DRG. IS ACTUALLY TRACED FROM DRG. NO. 7 OF JOB NO. 220 ON DATED 24.3.73
SD: 24-3-73

NOTE:- THIS DRAWING HAS BEEN COMPUTERISED ON 06-11-08 FROM DRG. NO. 7, JOB NO. 220



FRONT ELEVATION



REAR ELEVATION

COPYRIGHT:
DEPARTMENT OF URBAN PLANNING
CHANDIGARH ADMINISTRATION

DISCLAIMER

THOUGH EVERY CARE HAS BEEN TAKEN TO PROVIDE THE CORRECT VERSION OF THE ARCHITECTURAL CONTROL ON THIS DIGITIZED (PDF) FORMAT, YET IN CASE OF ANY DISCREPANCY, THE MASTER COPY OF THE ARCHITECTURAL CONTROL APPLICABLE ON EACH SUCH SITE, AS AVAILABLE IN THE COMMERCIAL RECORD OF THE OFFICE OF CHIEF ARCHITECT OR HER/HIS INTERPRETATION WILL OVERRULE THE DIGITIZED FORMAT.

ATTESTED TRUE COPY

Sd: KUREKAR
27.3.73
ASSTT. ARCHITECT

DESCRIPTION	DATE	SIGN
REVISIONS		

Sd: S.L.VERMA 5.X.70 CHIEF ADMINISTRATOR	Sd: M.N.SHARMA 3.X.70 CHIEF ARCHITECT
Sd: P.JEANNERET SENIOR ARCHITECT	Sd: ADITYA PARKASH 22.X.70 JUNIOR ARCHITECT

OFFICE OF THE CHIEF ARCHITECT CHANDIGARH .U.T.

SCALE = 1/2 INCH TO A FOOT

DRAWN	DRG NO.	JOB NO.
Sd: 24TH MARCH 1973	7	220

DETAIL DRAWING SHOP CUM FLAT SECTOR - 24 ELEVATIONS.