

DEPARTMENT OF
ARCHITECTURE .U.T.

S.NO. NOTES

1. THIS DRAWING IS THE PROPERTY OF DEPTT. OF ARCHITECTURE U.T. CHANDIGARH AND FORMERLY OF THE Pb. GOVT. AND MUST NOT BE ALTERED, COPIED OR USED IN WHOLE OR IN PART WITHOUT THE PERMISSION OF THIS DEPTT. IN WRITING.
2. THIS DRG. IS ACTUALLY TRACED FROM DRG. NO.9 JOB NO. 220
NIRMAL KUMARI
28-2-73

NOTE:-
THIS DRAWING HAS BEEN COMPUTERISED
ON FROM DRG. NO. 9, JOB NO. 220.

S.NO. DESCRIPTION DATE SIGN

REVISIONS

Sd/- S.L.VARMA
CHIEF ADMINISTRATOR

Sd/- M.N.SHARMA
CHIEF ARCHITECT

Sd/- P.JEANNERET
SENIOR ARCHITECT

Sd/- A.PARKASH
JUNIOR ARCHITECT

ASSTT. ARCHITECT

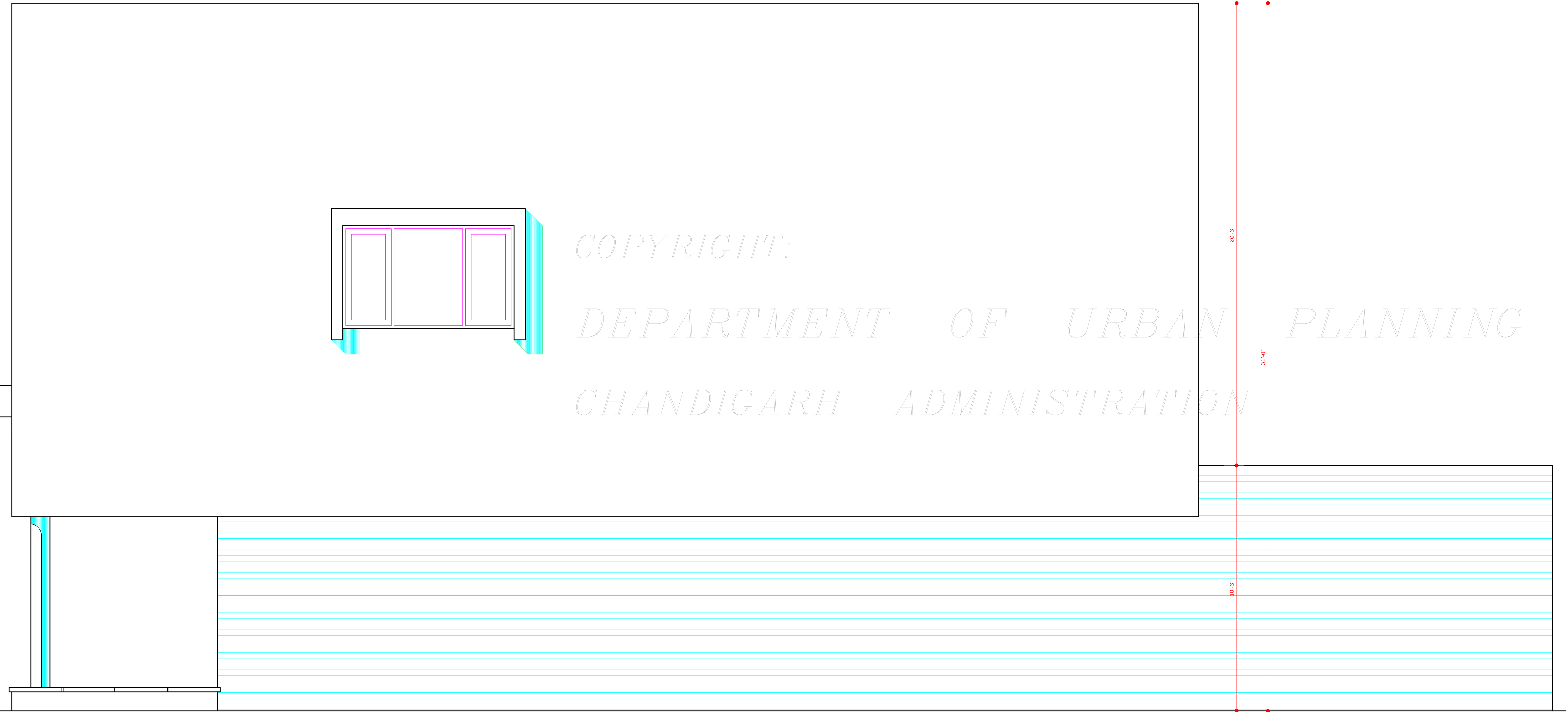
OFFICE OF THE CHIEF
ARCHITECT CHANDIGARH

SCALE = 1/2 INCH TO A FOOT DATE - 22-10-58

DRAWN	JOB NO.	DRG NO.
REDRAWN NIRMAL KUMARI	220	9

DETAIL DRAWING OF
S.C. FLATS SECTOR 24

ELEVATIONS



RIGHT END ELEVATION

DISCLAIMER

THOUGH EVERY CARE HAS BEEN TAKEN TO PROVIDE THE CORRECT VERSION OF THE ARCHITECTURAL CONTROL ON THIS DIGITIZED (PDF) FORMAT, YET IN CASE OF ANY DISCREPANCY, THE MASTER COPY OF THE ARCHITECTURAL CONTROL APPLICABLE ON EACH SUCH SITE, AS AVAILABLE IN THE COMMERCIAL RECORD OF THE OFFICE OF CHIEF ARCHITECT OR HER/HIS INTERPRETATION WILL OVERRULE THE DIGITIZED FORMAT.

ATTESTED AS TRUE COPY

Sd/- KUREKAR
2-3-73
ASSTT. ARCHITECT