

DEPARTMENT OF
ARCHITECTURE

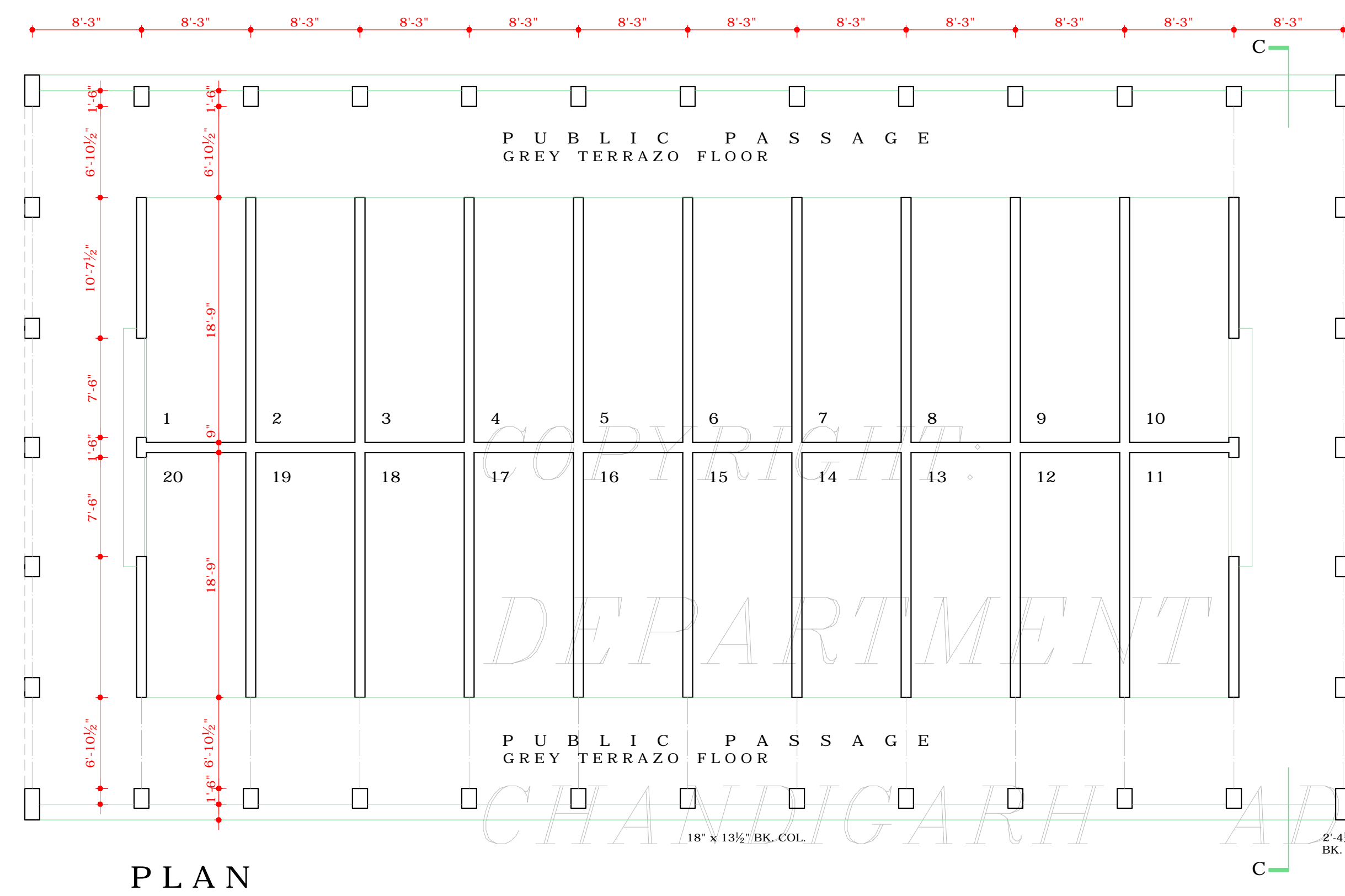
NOTE

THIS DRG. IS THE PROPERTY OF THE DEPTT. OF ARCHITECTURE, CHANDIGARH U.T. AND FORMERLY THE GOVT. OF PUNJAB AND MUST NOT BE ALTERED, COPIED OR USED IN WHOLE OR IN PART WITHOUT THE PERMISSION OF THIS DEPTT. IN WRITING.

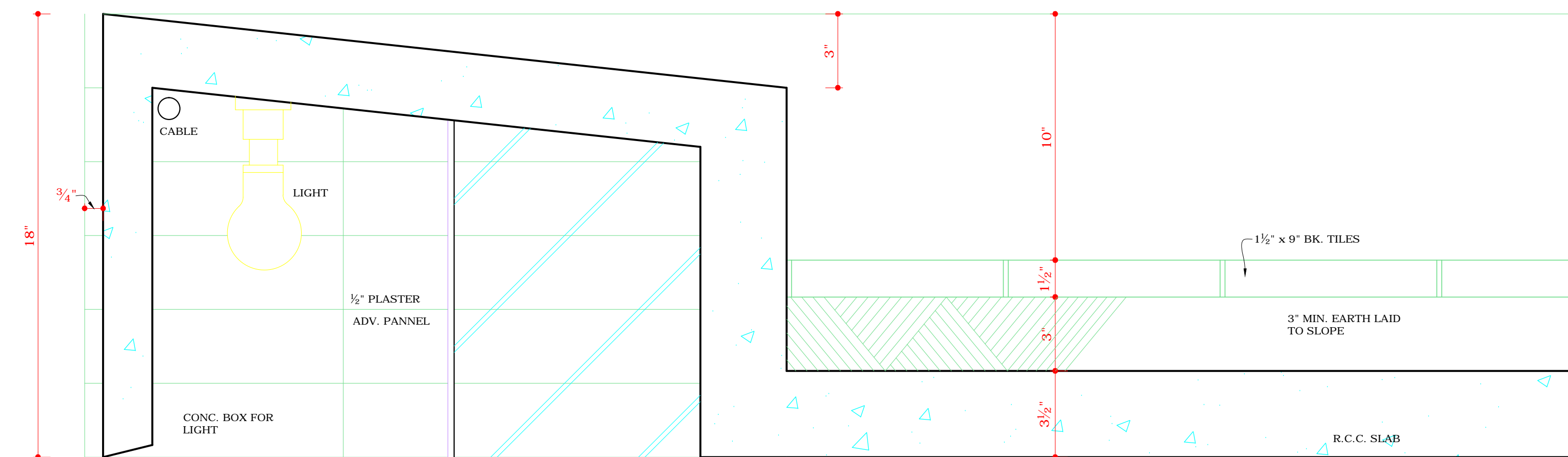
THIS DRG. IS ACTUALLY TRACED FROM DRG. 2 OF JOB No. 171 ON DATED 12.6.73.

Sd/-
12.6.73

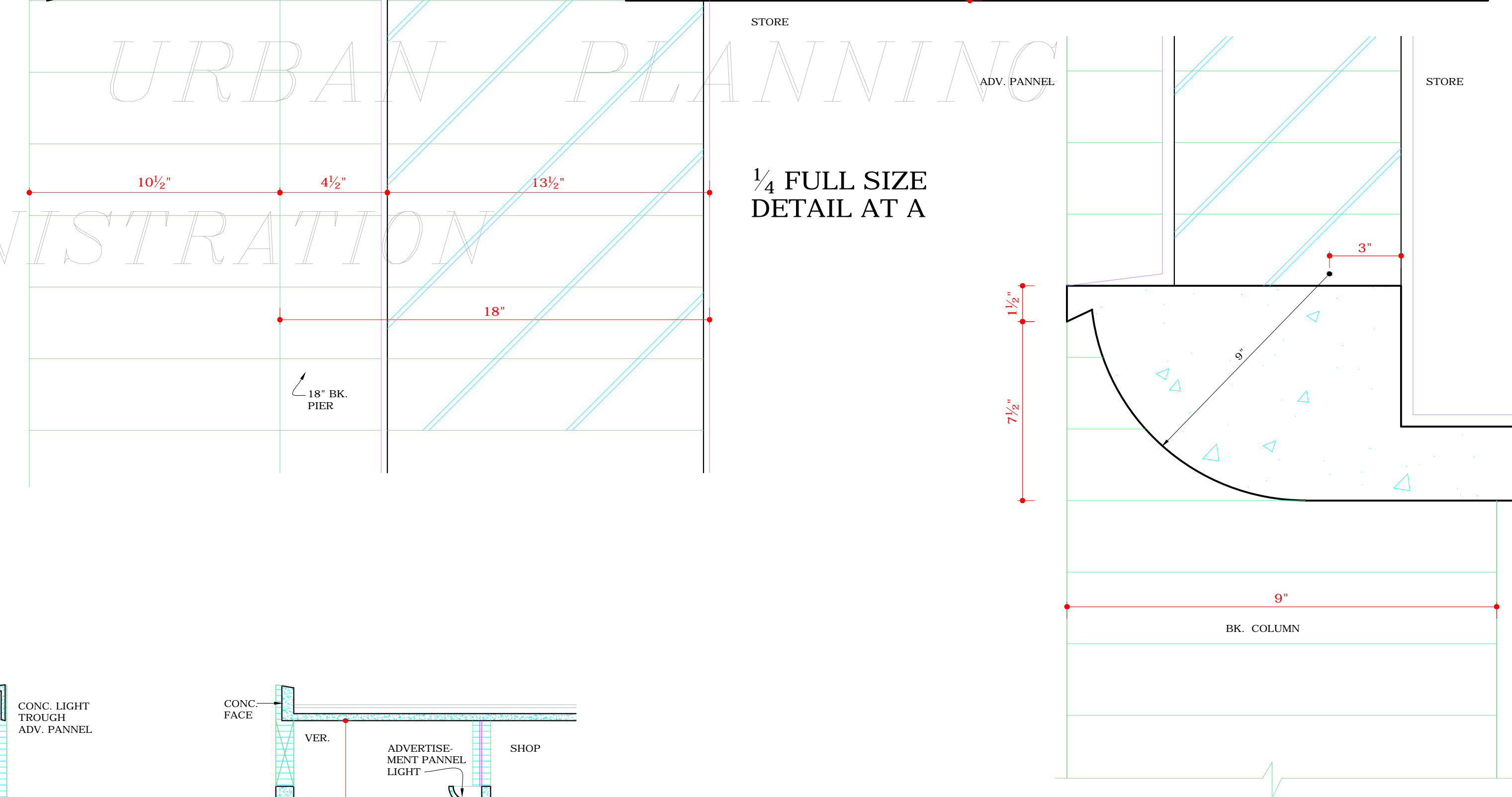
NOTE:-
THIS DRAWING HAS BEEN COMPUTERISED ON 23-12-00 FROM DRG. No. 2 JOB No. 171



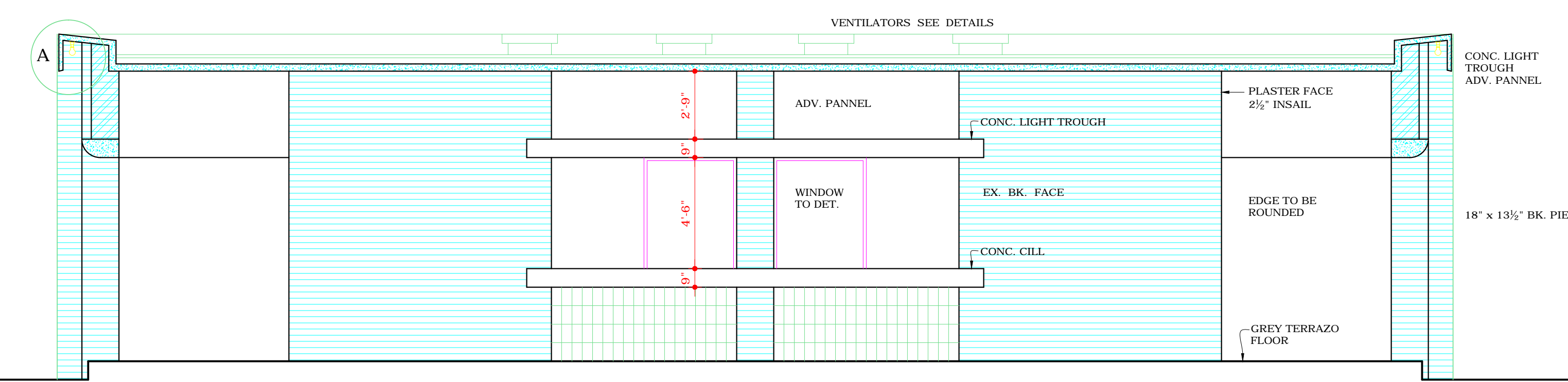
PLAN



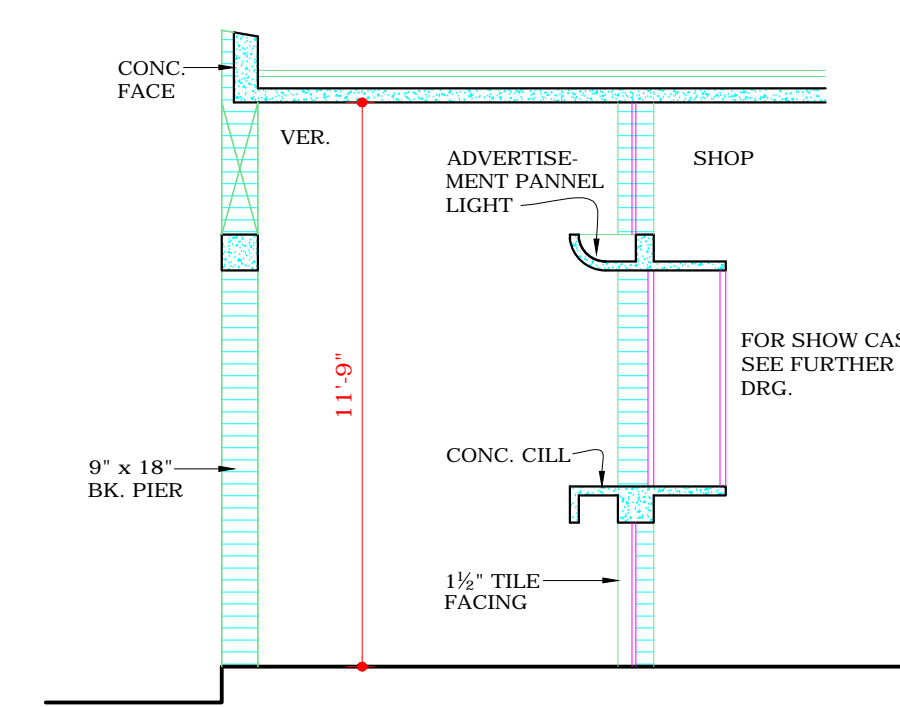
1/4 FULL SIZE
DETAIL AT A



1/4" FULL SIZE
DETAIL AT B



CROSS SECTION AT CC'
1/4" = 1'-0"



PART CROSS SECTION
THROUGH SHOW WINDOW

DISCLAIMER

THOUGH EVERY CARE HAS BEEN TAKEN TO PROVIDE THE CORRECT VERSION OF THE ARCHITECTURAL CONTROL ON THIS DIGITIZED (PDF) FORMAT, YET IN CASE OF ANY DISCREPANCY, THE MASTER COPY OF THE ARCHITECTURAL CONTROL APPLICABLE ON EACH SUCH SITE, AS AVAILABLE IN THE COMMERCIAL RECORDS OF THE OFFICE OF CHIEF ARCHITECT OR HER HIS INTERPRETATION WILL OVERRULE THE DIGITIZED FORMAT.

ATTESTED TRUE COPY
Sd/- M.U. KUREKAR
9.7.73
ASSTT. ARCHITECT

Sd/- S.L. VARMA
5.X.70
CHIEF ADMINISTRATOR

Sd/- M.N. SHARMA
3.X.70
CHIEF ARCHITECT

Sd/- P. JEANNERET
SENIOR ARCHITECT

Sd/- B.P. MATHUR
ASSTT. ARCHITECT

OFFICE OF THE
CHIEF ARCHITECT
CHANDIGARH U.T.

SCALE = 1/8" INCH TO A FOOT DATE: 21.XII.58

DRAWN B.P.M. DRG. No. 2 JOB No. 171
Sd/- GURBIR SINGH
12 th JUNE 1973

BOOTHS IN FRUIT
AND GRAIN MARKET
CHANDIGARH