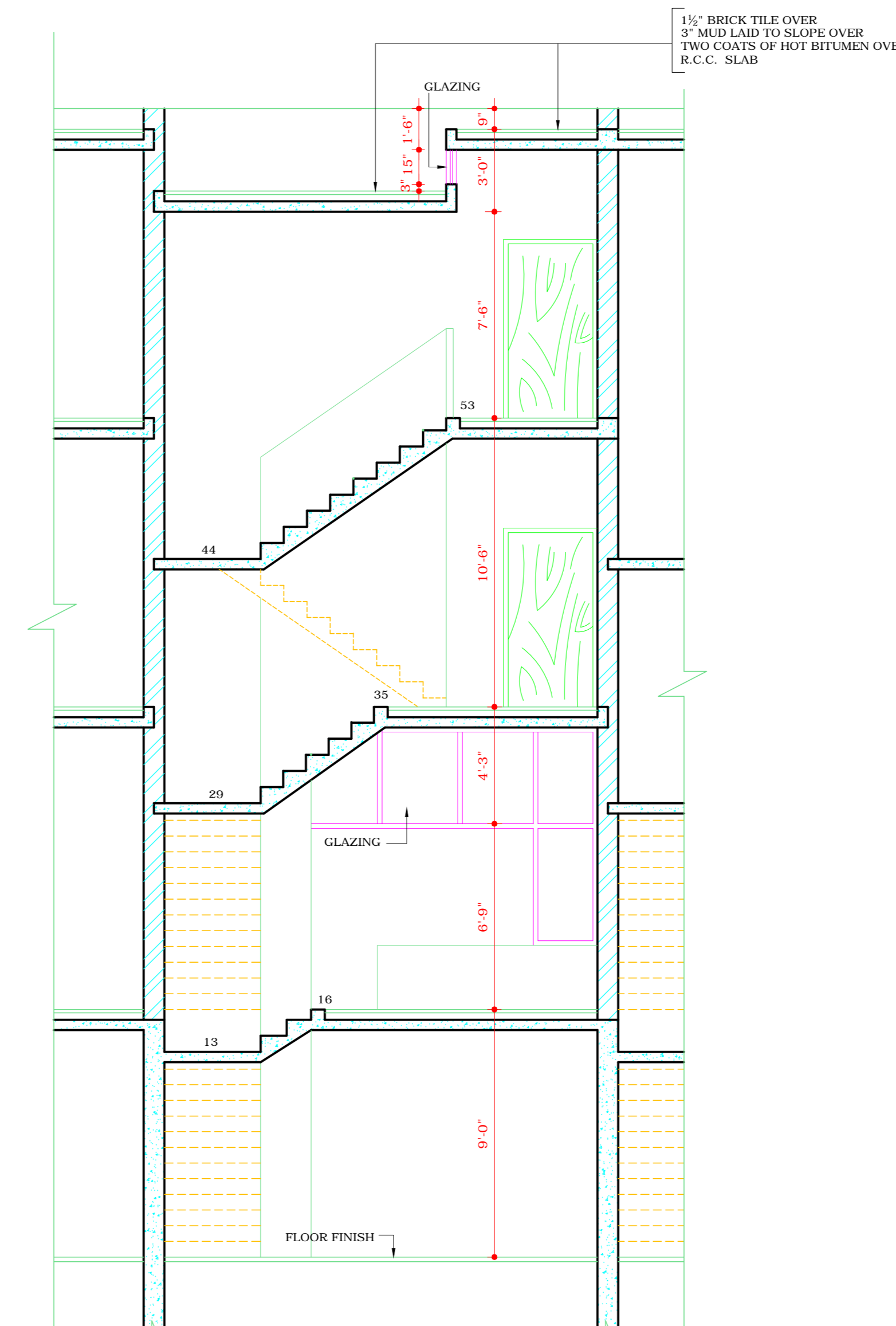
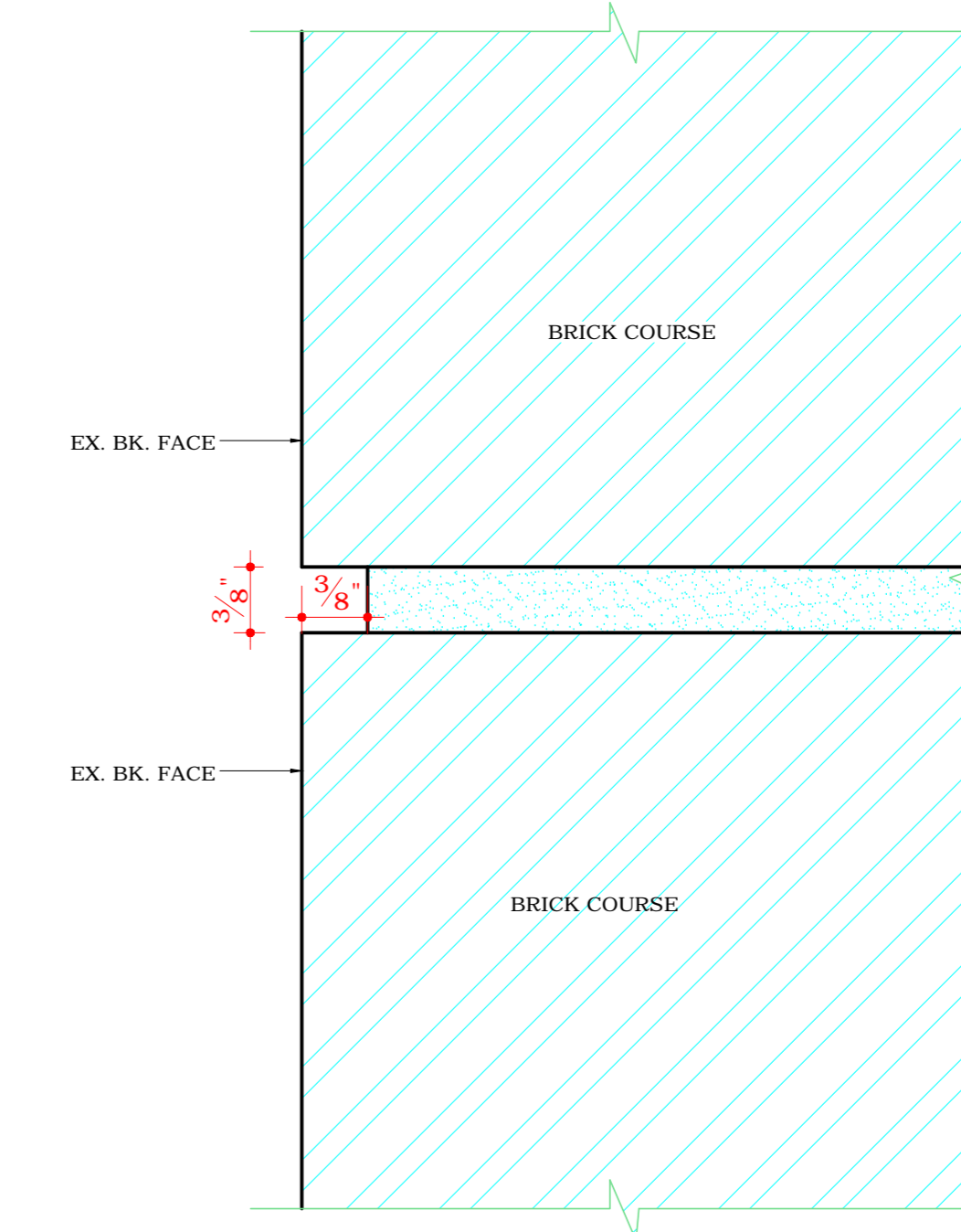


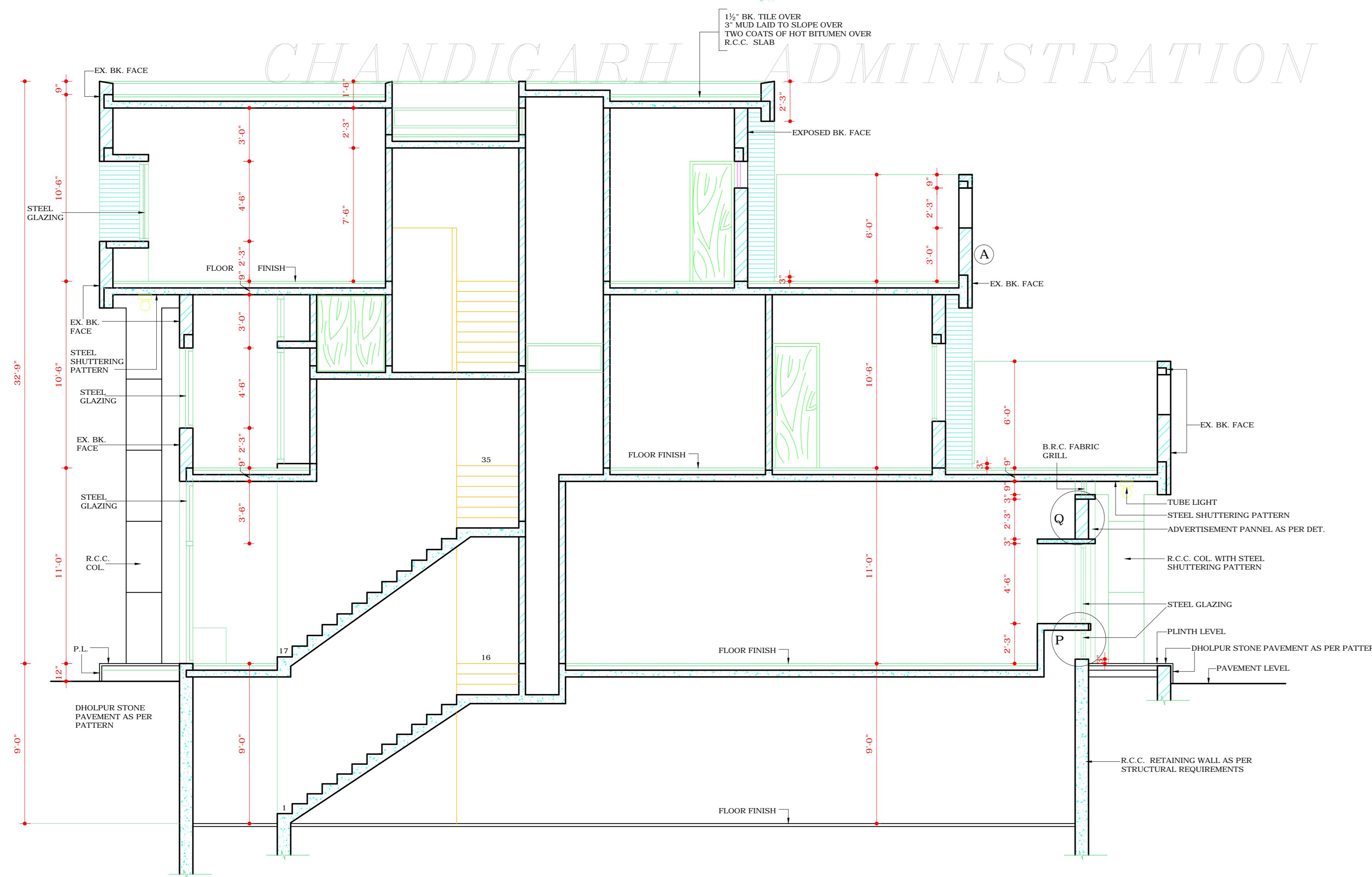
LEFT SIDE ELEVATION



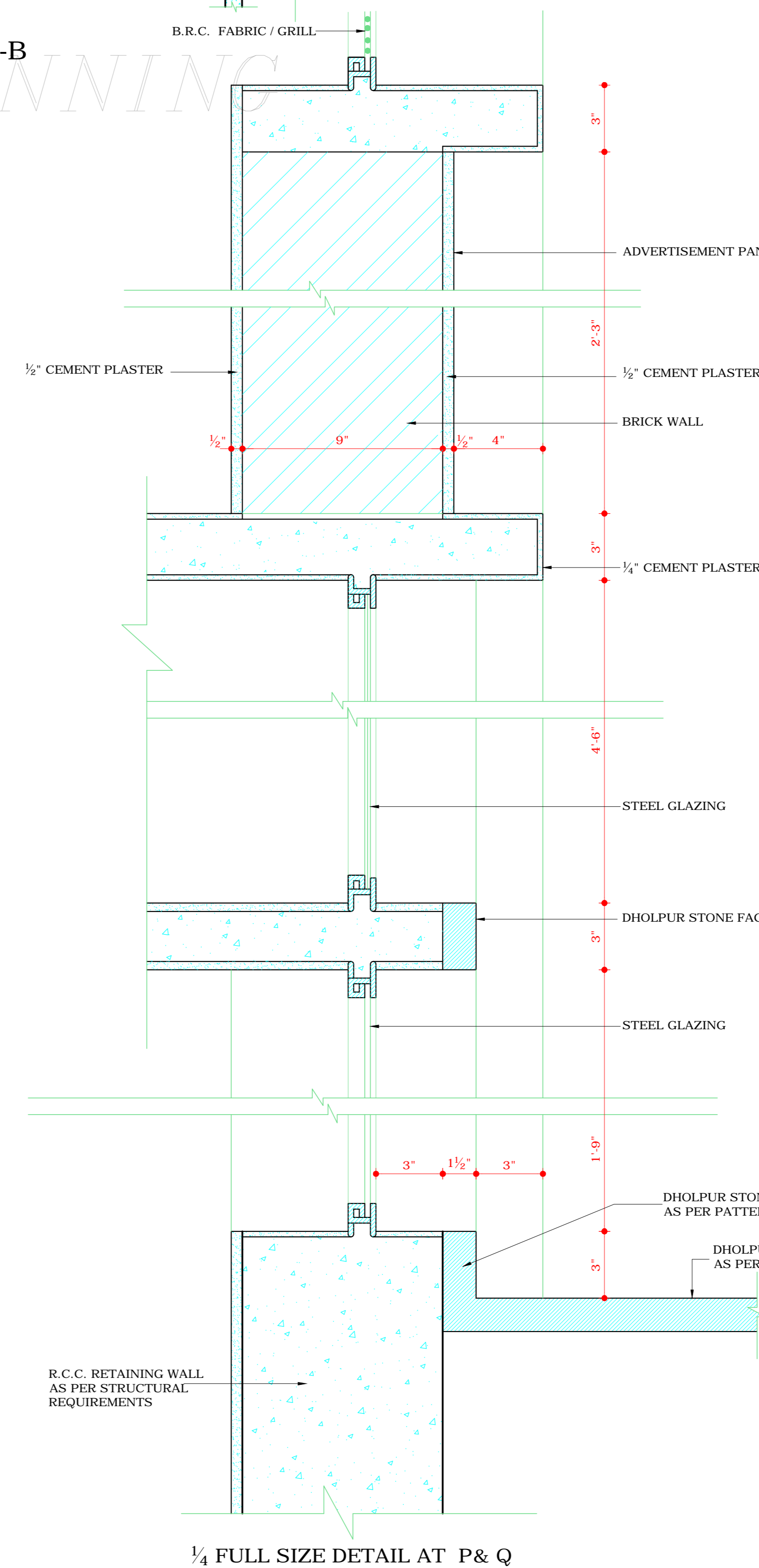
SECTION AT B-B



FULL SIZE DETAIL AT 'A' OF
DEEP STRUCK LIME SURKHI POINTING



SECTION AT A - A



1/4 FULL SIZE DETAIL AT P & Q

DISCLAIMER
THOUGH EVERY CARE HAS BEEN TAKEN TO PROVIDE THE CORRECT VERSION OF THE ARCHITECTURAL CONTROL ON THIS DIGITIZED (PDF) FORMAT, YET IN CASE OF ANY DISCREPANCY, THE MASTER COPY OF THE ARCHITECTURAL CONTROL APPLICABLE ON EACH SUCH SITE, AS AVAILABLE IN THE COMMERCIAL RECORD OF THE OFFICE OF CHIEF ARCHITECT OR HER/HIS INTERPRETATION WILL OVERRULE THE DIGITIZED FORMAT.

APPROVAL RECEIVED FROM
THE CHIEF ADMINISTRATOR
CHD. ADMN. VIDE MEMO No. 29 (1) - 3
U.T.F.1 (2) - 88 / 15140 DT. CHD. 31.10.88

Sd/-
DT: 28.10.88
MRS. SATWANT REDDY
CHIEF ADMINISTRATOR
CHANDIGARH ADMINISTRATION

S.No. NOTES

THIS DRG. IS THE PROPERTY OF THE DEPTT. OF ARCHITECTURE U.T. CHANDIGARH. IT MUST NOT BE ALTERED, TRACED, COPIED OR USED IN WHOLE OR IN PART WITHOUT THE PERMISSION OF THIS DEPTT. IN WRITING.
THIS DRG. IS TO BE READ TOGETHER WITH DRG. No. 16 TO 18 OF JOB No. 2144.

NOTE:-
THIS DRAWING HAS BEEN COMPUTERISED ON 12-01-09 FROM DRG. NO. 19_JOB NO. 2144

S.No. DESCRIPTION SIGN DATE

REVISIONS

Sd/- O.P. MEHTA 17.10.88 CHIEF ARCHITECT	Sd/- V.P. ANIL 14.10.88 SENIOR ARCHITECT
------------------------------------------------	------------------------------------------------

Sd/- S.S. SEKHON 14.9.88 ARCHITECT	Sd/- RAJINDER SINGH KALSI 30.9.88 ASSTT.Architect
------------------------------------------	---------------------------------------------------------

OFFICE OF THE CHIEF
ARCHITECT & SECY. U.T. CHD.

SCALE:- 1/4" TO A FOOT DATE :

BALBIR SINGH DEALT BY	JOB NO. 2144	DRG. NO. 19
--------------------------	-----------------	----------------

CHECKED
ARCH. CONTROL SHEET
(REVISED) FOR GODOWN
(SIZE - 16'-6" x 60'-0")
BEHIND GRAIN SHOPS
SECTOR - 26
LEFT SIDE ELEVATION &
SECTION