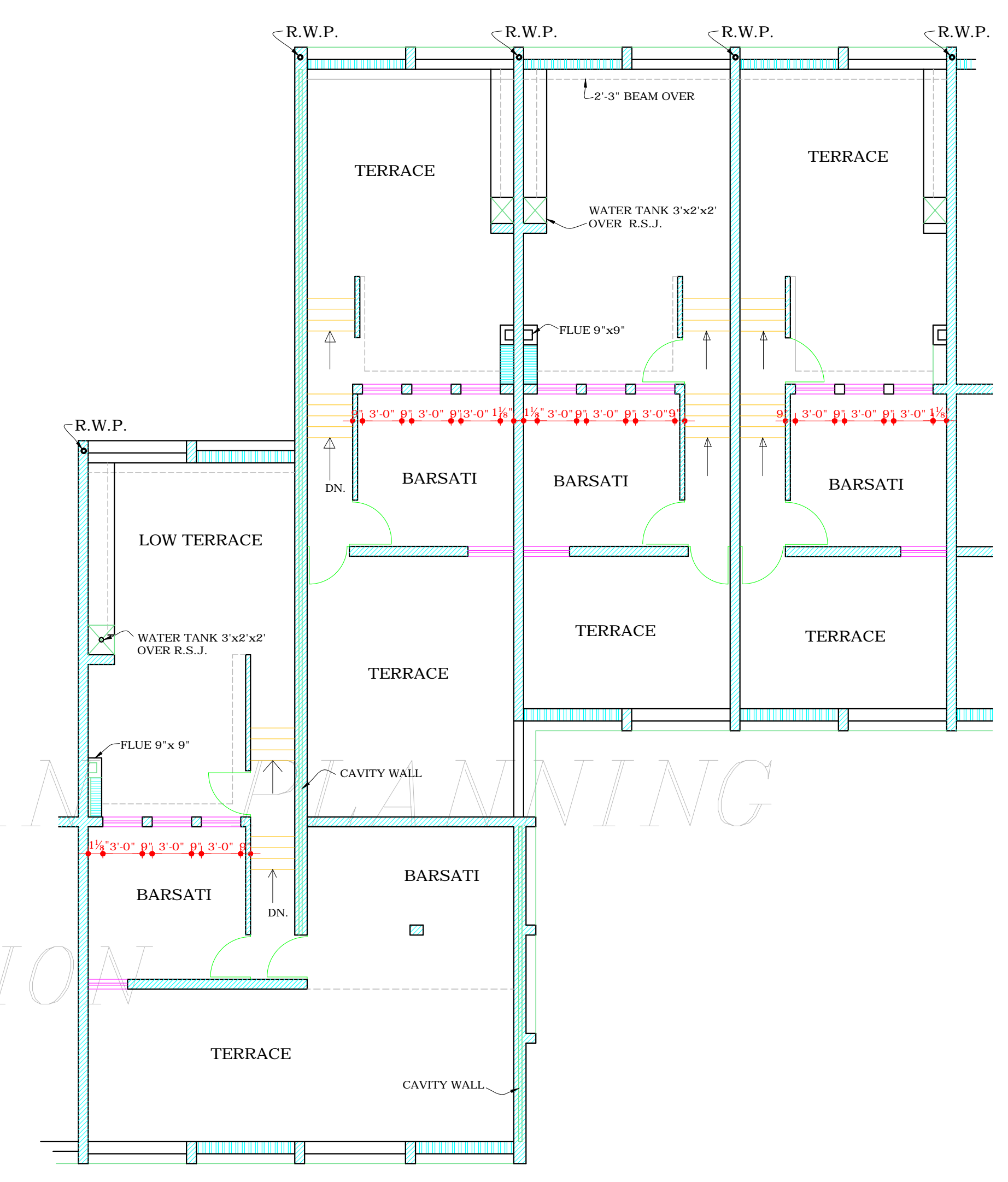
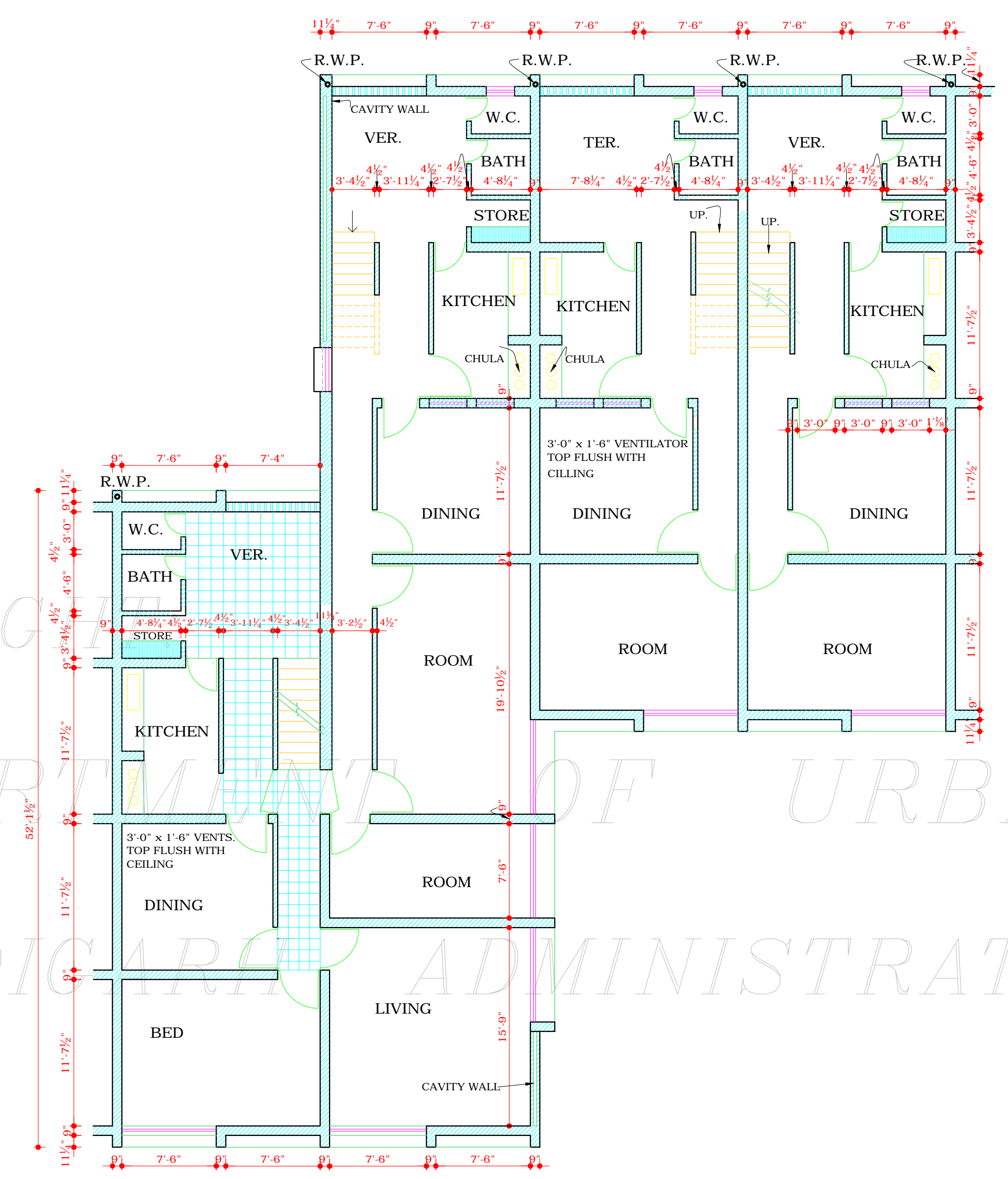
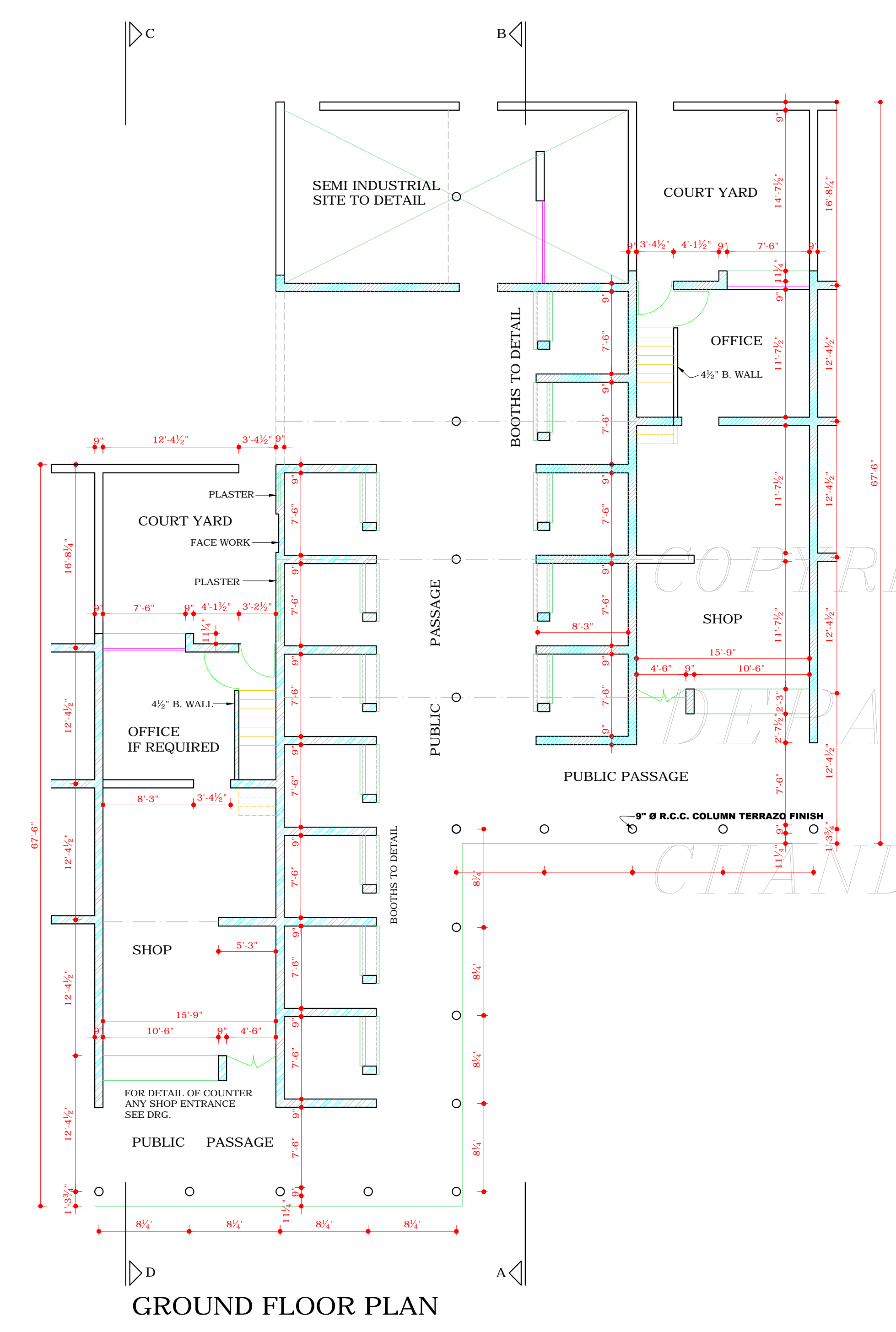


CHANDIGARH PROJECT

NOTE :-
1. ALL NOTES GIVEN ON DRG. No. 1 JOB No. 126-A SHALL BE READ ALONG WITH THIS DRAWING.



THIS DRAWING IS TRACED FROM DRG. No. 2/A JOB No. 126-A

AS PER CHIEF COMMISSIONER'S ORDER DATED 15-3-71 REVISED IN MADE ON 6.7.71 REAR COURT YARD COVERAGE OPTIONAL PROVIDED IT IS IN CONFORMITY WITH THE BUILDING BY-LAWS.

NOTE:- THIS DRAWING HAS BEEN COMPUTERISED ON 27-07-09 FROM ORIGINAL DRG. No. 2-A JOB No. 126-A

Sd/-
S.L. VERMA DATE 26.X.70
CHIEF ADMINISTRATOR.

Sd/-
M. N. SHARMA DATE 26.X.70
CHIEF ARCHITECT.

Sd/-
A. PARKASH
JUNIOR ARCHITECT.

SCALE :- EIGHT FEET TO AN INCH.		DRG. No. 2/A
TRACED BY Sd/- SHRI RAM DHIMAN	CHECKED BY	
DATED 6.9.57	JOB No. 126 A	

DESIGN OF
SPECIAL SHOP CUM FLAT
IN SECTOR 18-D & 27-C

DISCLAIMER
THOUGH EVERY CARE HAS BEEN TAKEN TO PROVIDE THE CORRECT VERSION OF THE ARCHITECTURAL CONTROL ON THIS DIGITIZED (PDF) FORMAT. YET IN CASE OF ANY DISCREPANCY, THE MASTER COPY OF THE ARCHITECTURAL CONTROL APPLICABLE ON EACH SUCH SITE, AS AVAILABLE IN THE COMMERCIAL RECORD OF THE OFFICE OF CHIEF ARCHITECT OR HER/HIS INTERPRETATION WILL OVERRULE THE DIGITIZED FORMAT.

ATTESTED BY
Sd/- BALWINDER SAINI
6.5.92

ASSISTANT ARCHITECT.