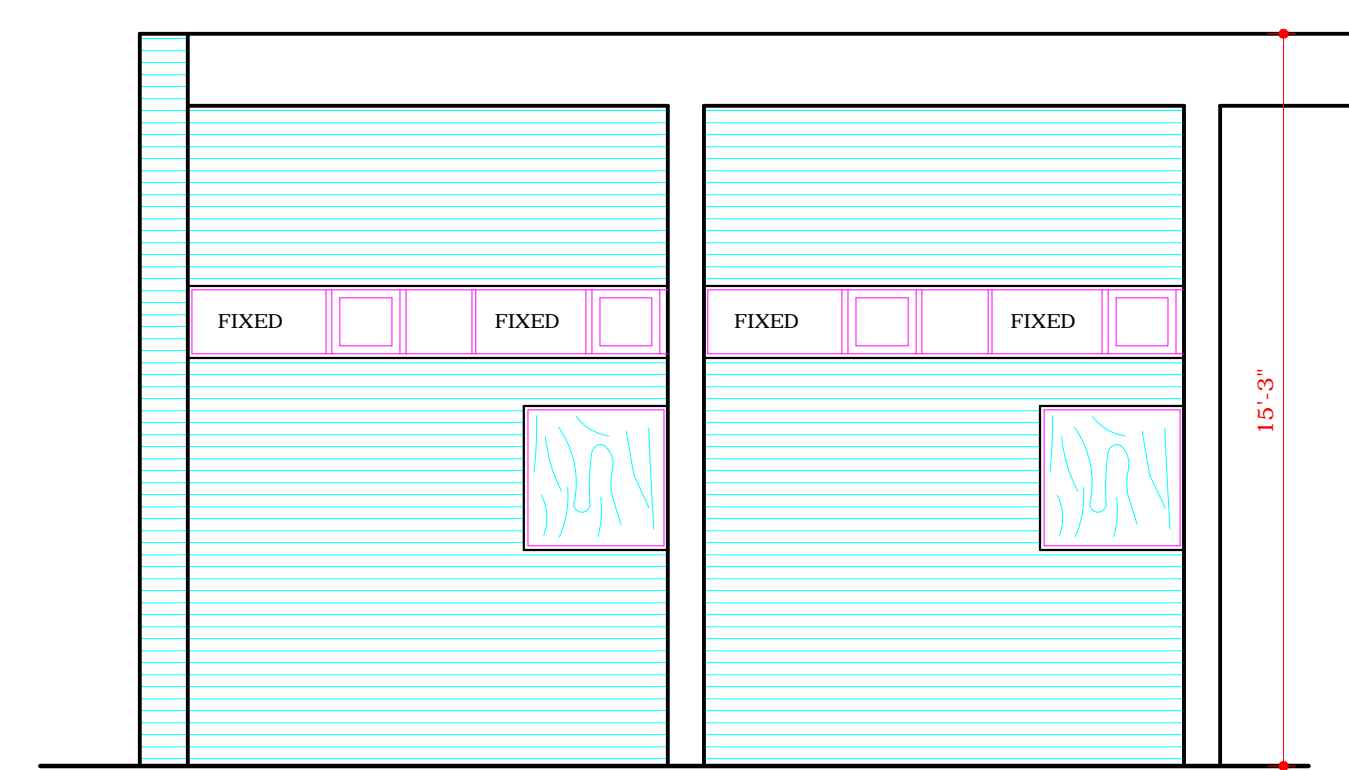
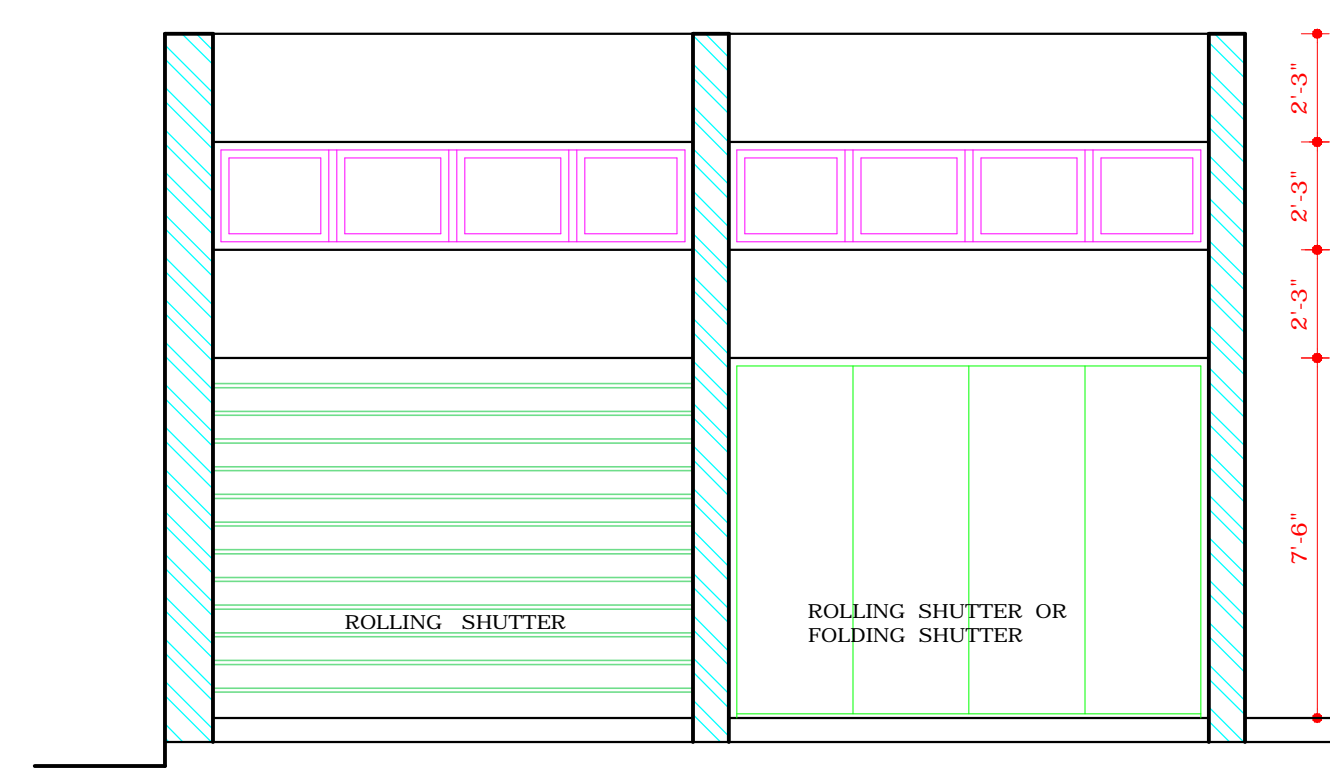


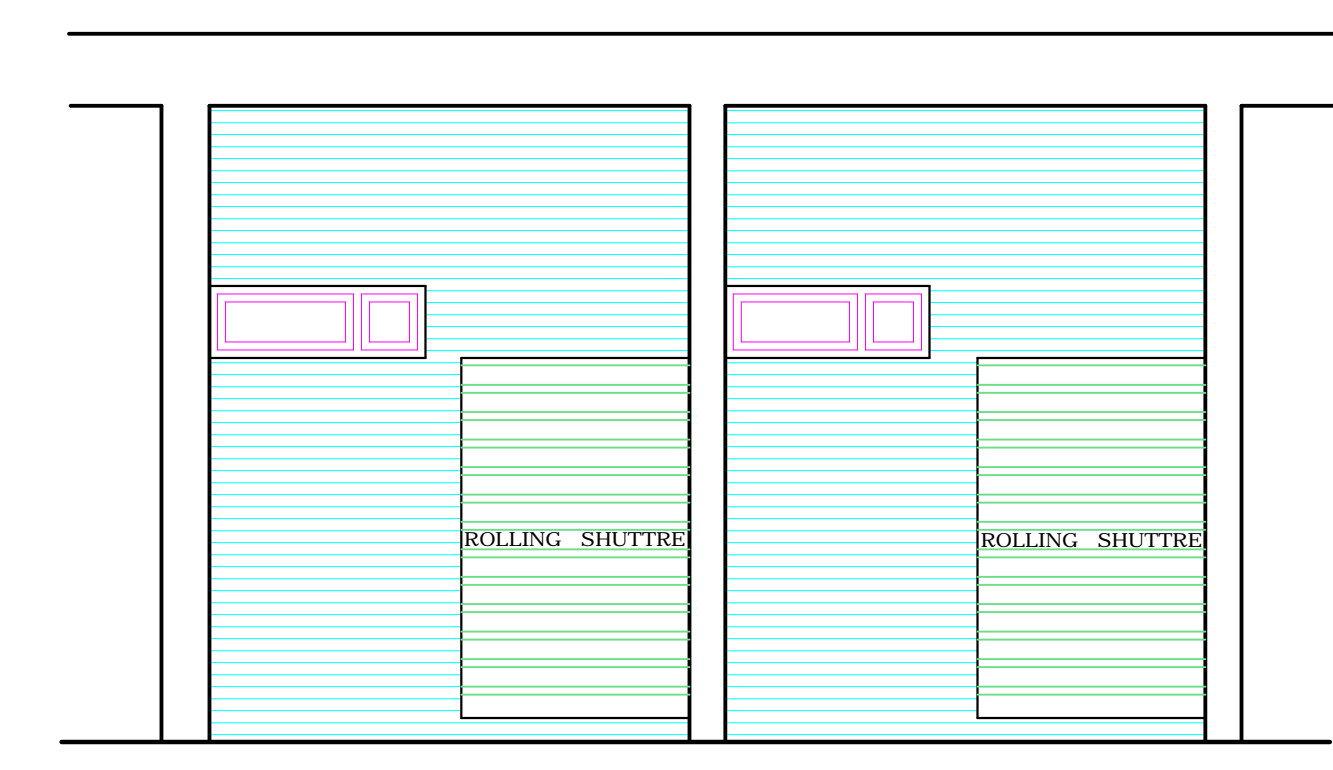
FRONT ELEVATION



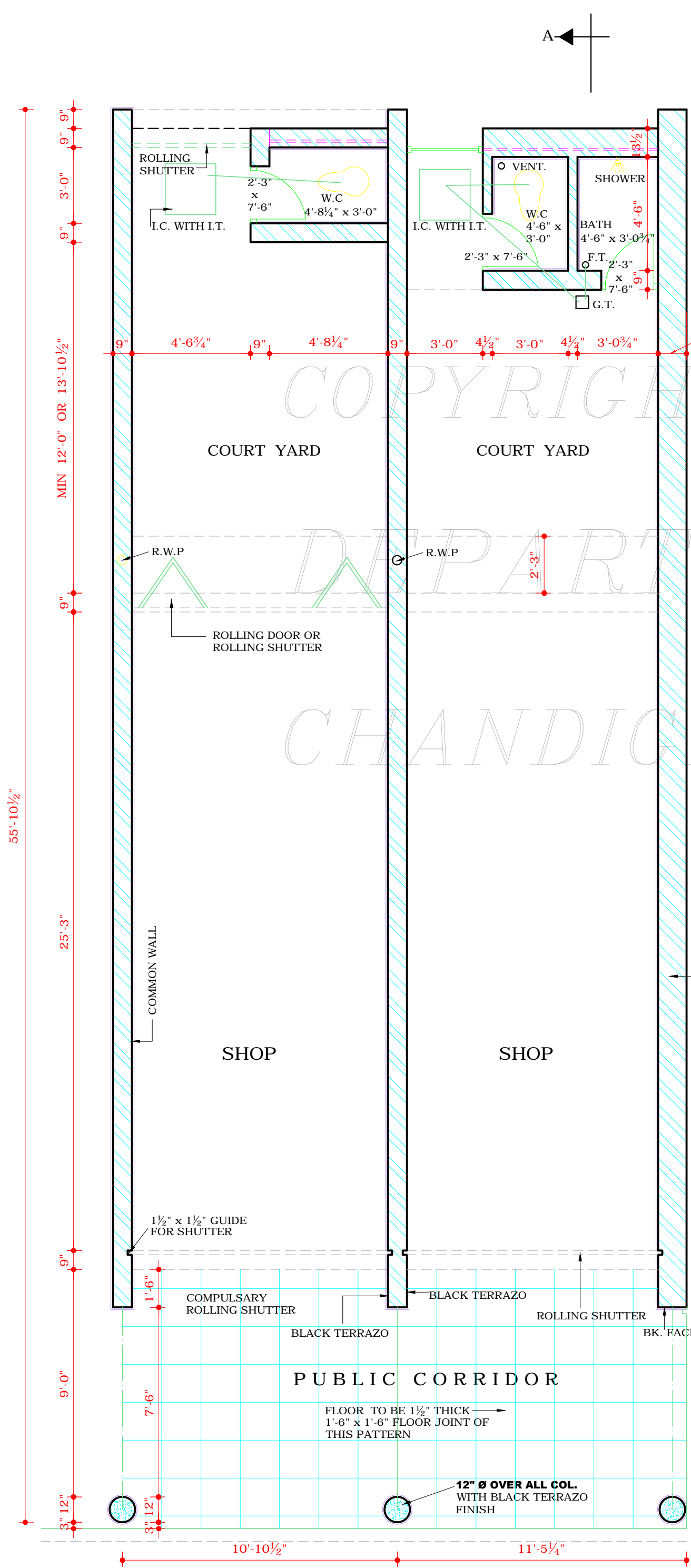
REAR ELEVATION (ALT No. 1)



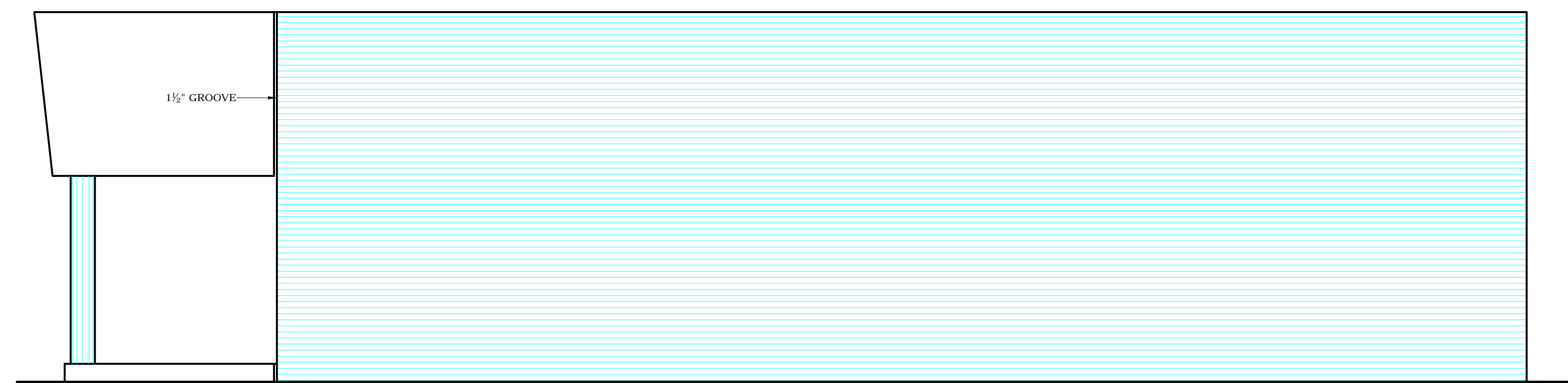
ELEVATION
LOOKING TOWARDS SHOP FROM COURT



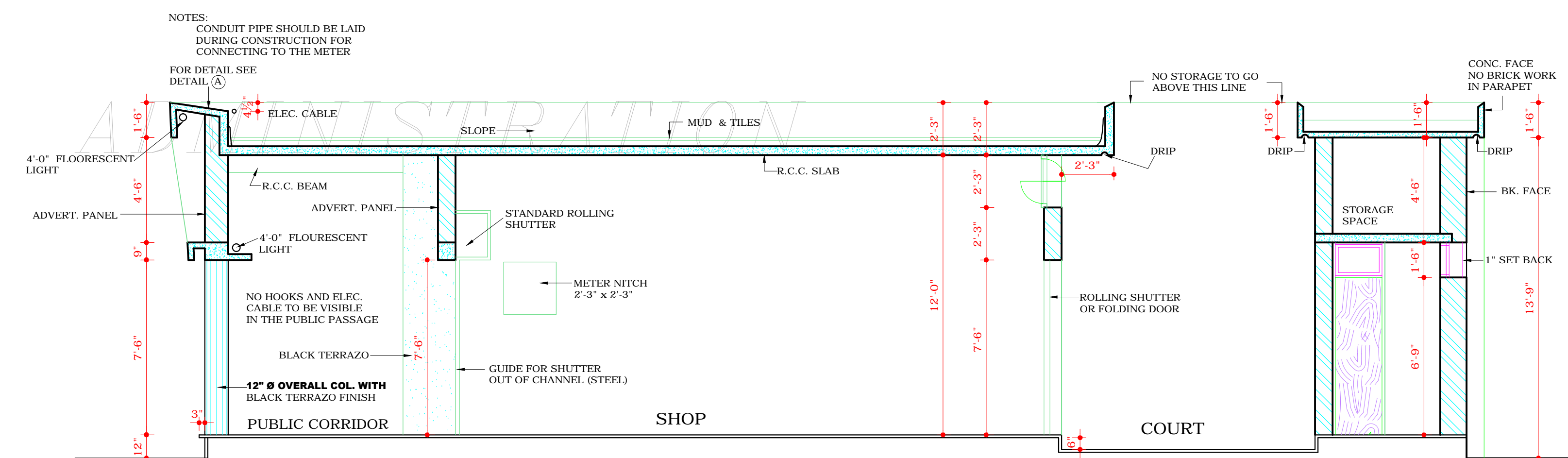
REVISED BACK ELEVATION (ALT No. 2)



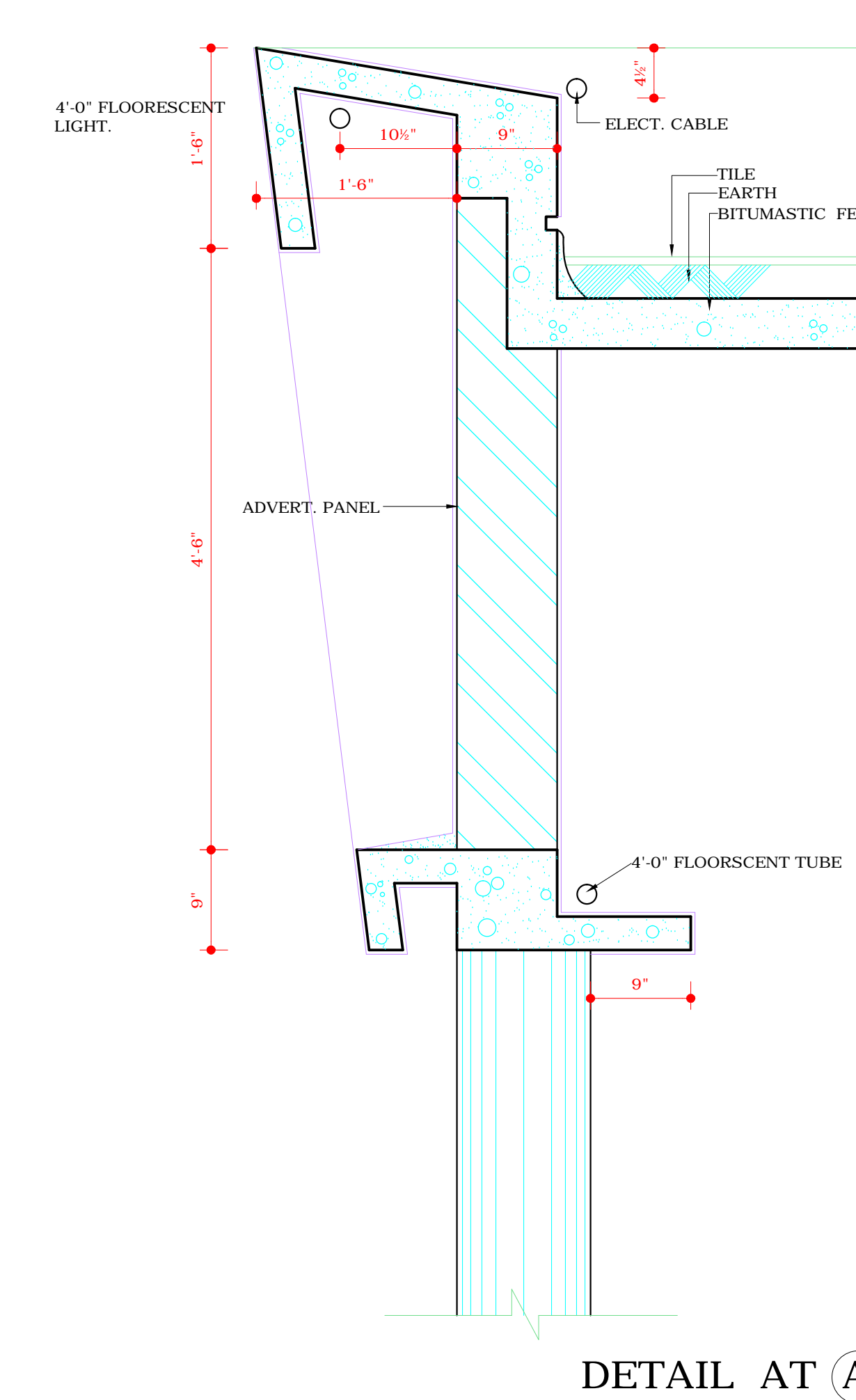
PLAN



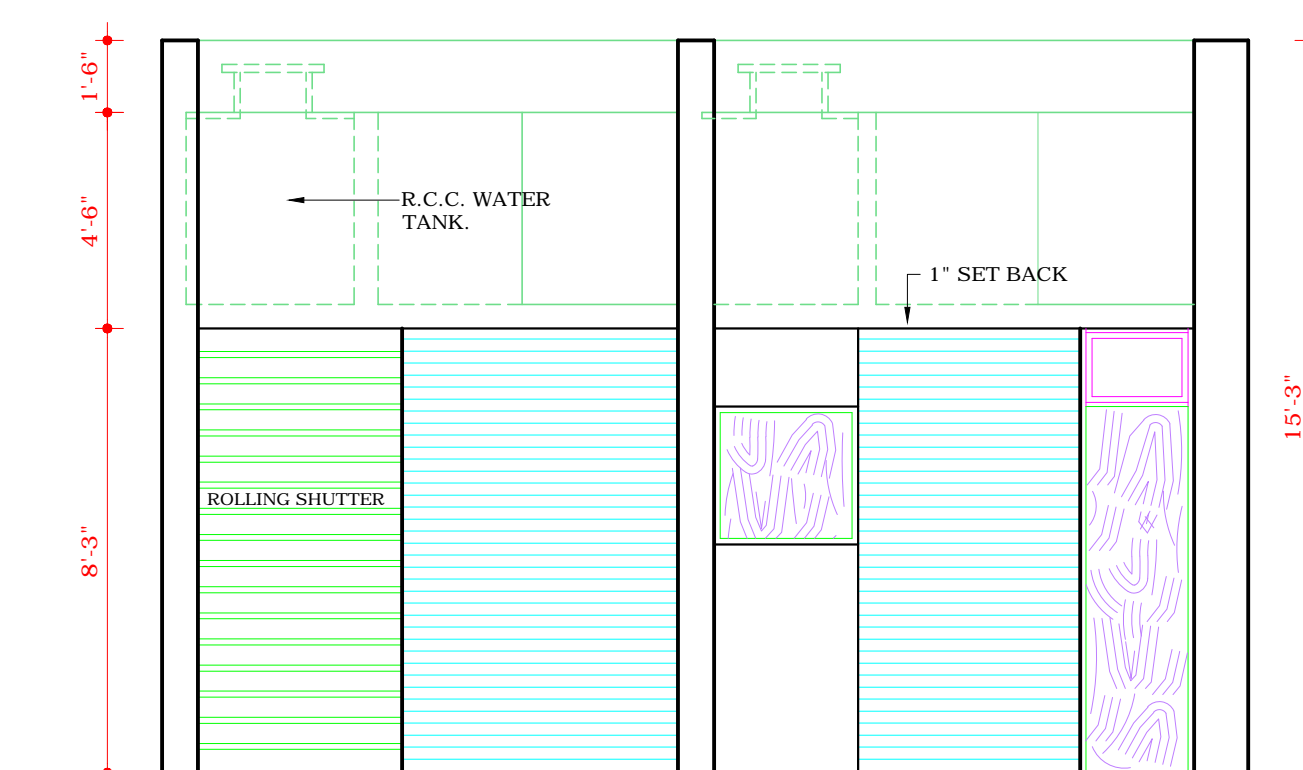
END ELEVATION



SECTION AT (A-A)



DETAIL AT (A)



ELEVATION LOOKING TOWARDS
W.C. & BATH FROM COURT

DISCLAIMER

THOUGH EVERY CARE HAS BEEN TAKEN TO PROVIDE THE CORRECT VERSION OF THE ARCHITECTURAL CONTROL ON THIS DIGITIZED (PDF) FORMAT, YET IN CASE OF ANY DISCREPANCY, THE MASTER COPY OF THE ARCHITECTURAL CONTROL APPLICABLE ON EACH SUCH SITE, AS AVAILABLE IN THE COMMERCIAL RECORD OF THE OFFICE OF CHIEF ARCHITECT OR HER/HIS INTERPRETATION WILL OVERRULE THE DIGITIZED FORMAT.

Sd/-
S.L. VARMA
5-X-70
CHIEF ADMINISTRATOR
Sd/-
SH. ADITYA PARKASH
1-8-99
(JUNIOR ARCHITECT)

DEPARTMENT OF
ARCHITECTURE (Pb)

1. IN CASE A PERSON BUILD A SHOP WHOSE ADJOINING OWNER IS NOT YET BUILDING, HE SHOULD CARRY THE TERRAZZO FINISH ON THE FIN. WALL AND COL. TO THE FULL EXTENT SPECIFIED AND CHARGE HIS SHARE FROM THE ADJOINING OWNER.
2. S. VARIATION MADE ON 18.11.64 ON THE BASIS OF REPRESENTATION FROM THE OWNER OF THE BAY SHOP SECTOR-20. THE ROLLING SHUTTER PROVIDED AT THE BACK TO GIVE ENTRY TO THE SHOP.
Sd/-
R.S. LAL
20-11-64
3. VARIATIONS MADE ON 24.8.60 AS BELOW ON THE BASIS OF P.H. ENGINEER'S REQUEST. POSITION AND SIZE OF W.C. AND BATH HAVE BEEN CHANGED. WINDOW 3'-0" x 3'-0" HAS BEEN PROVIDED IN THE REAR SIDE POSITION OF I.C. AND G.T. AND THE DISPOSAL OF REFUGE HAVE BEEN SHOWN. SIZE OF COURT YARD HAS BEEN FIXED.
Sd/-
ADITYA PARKASH
24.2.60

NOTE:-
THIS DRAWING HAS BEEN COMPUTERISED ON 25-02-09 FROM DRG. NO. 1, JOB NO. 227.

THIS DRG. TRACED FROM
DRG. No. 1 JOB No. 227
DATED 1.1.66
Sd/-
1.1.66

S.NO. DATE SIGN

REVISIONS.

Sd/-
M.N. SHARMA
28.9.70
CHIEF ARCHITECT: SENIOR ARCHITECT

ARCHITECT ASS'TT. ARCHITECT

OFFICE OF THE CHIEF
ARCHITECT TO GOVT. Pb
CHANDIGARH.

SCALE = 1/4" TO A FOOT DATE: 4.1.60

DRAWN:- PRAN NATH DRG No. 1 JOB No. 227
TRD. 1
Sd/-

DESIGN FOR SHOP
SIZE 10'-10 1/2" x 55'-10 1/2"
FOR BAJWARA
MIGRATION