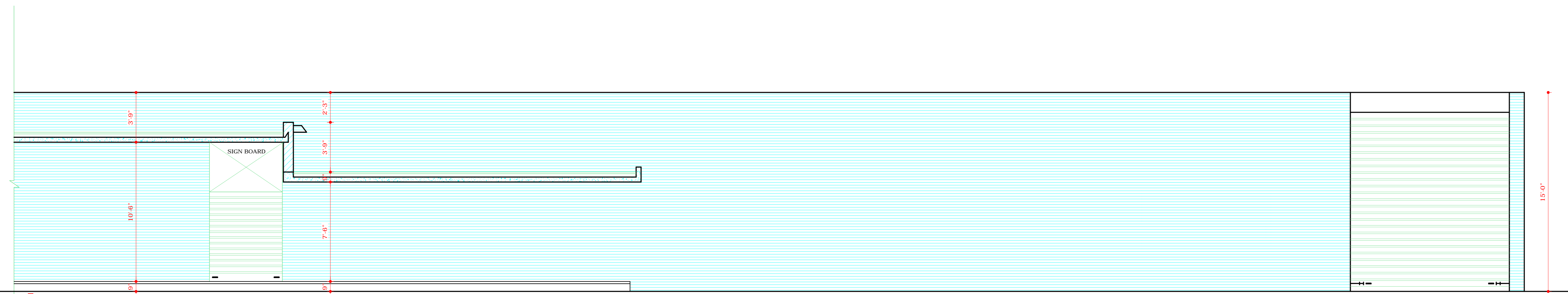
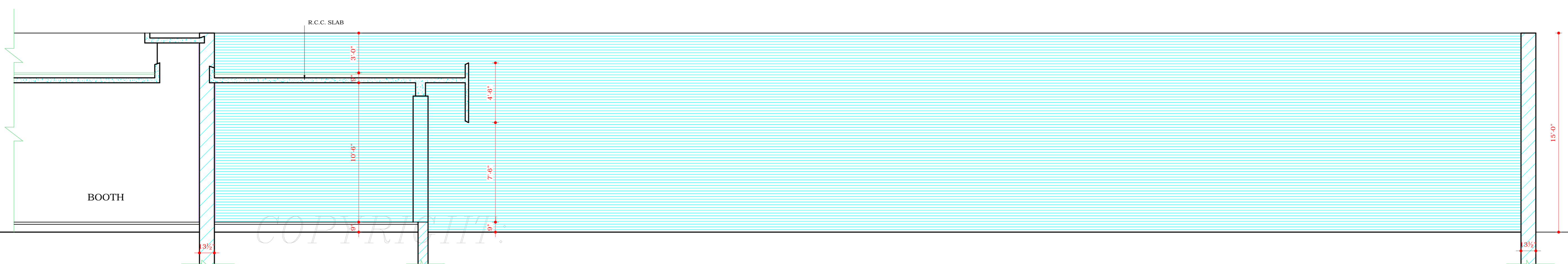


DEPARTMENT OF  
ARCHITECTURE



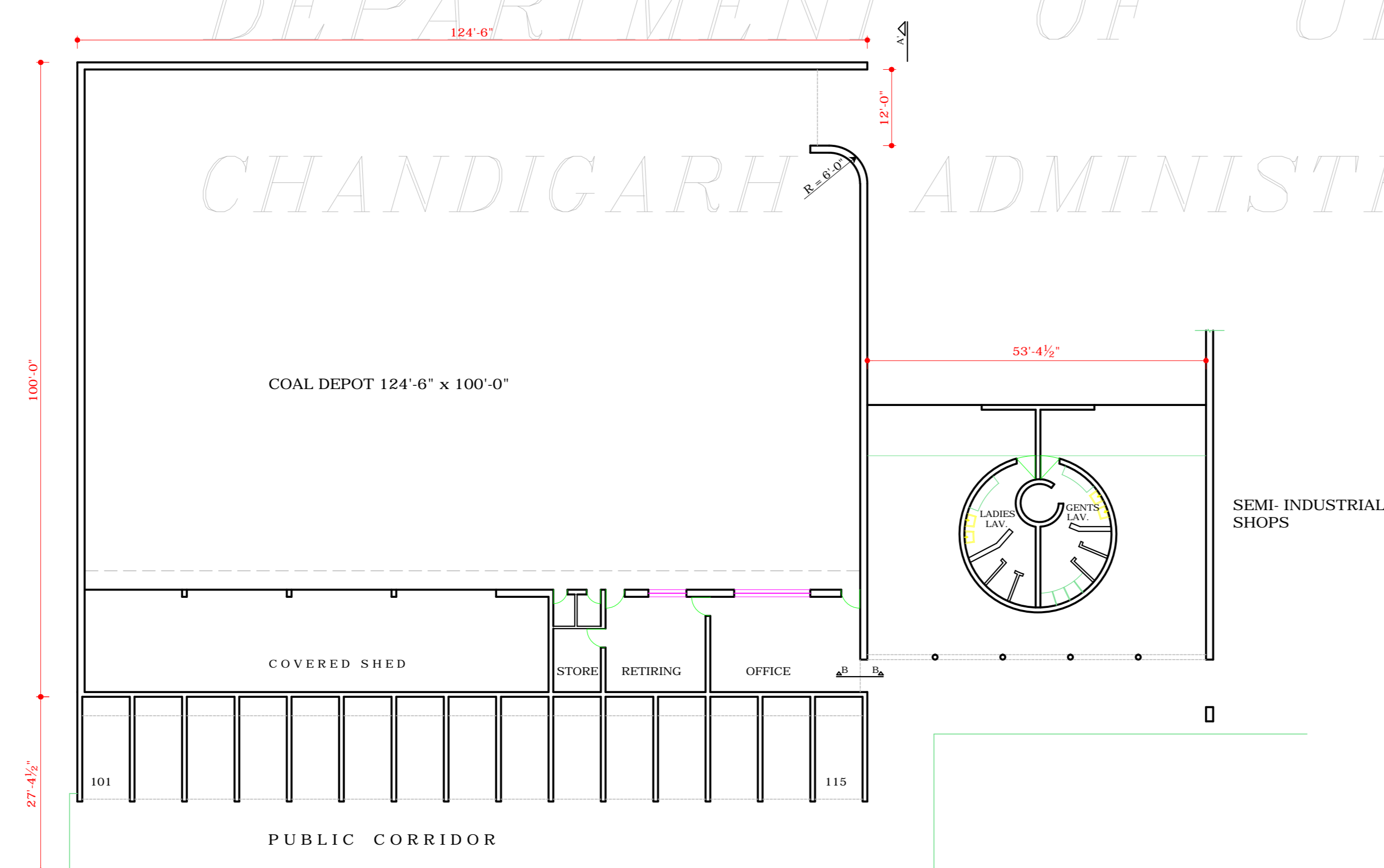
SECTIONAL ELEVATION AT AA'



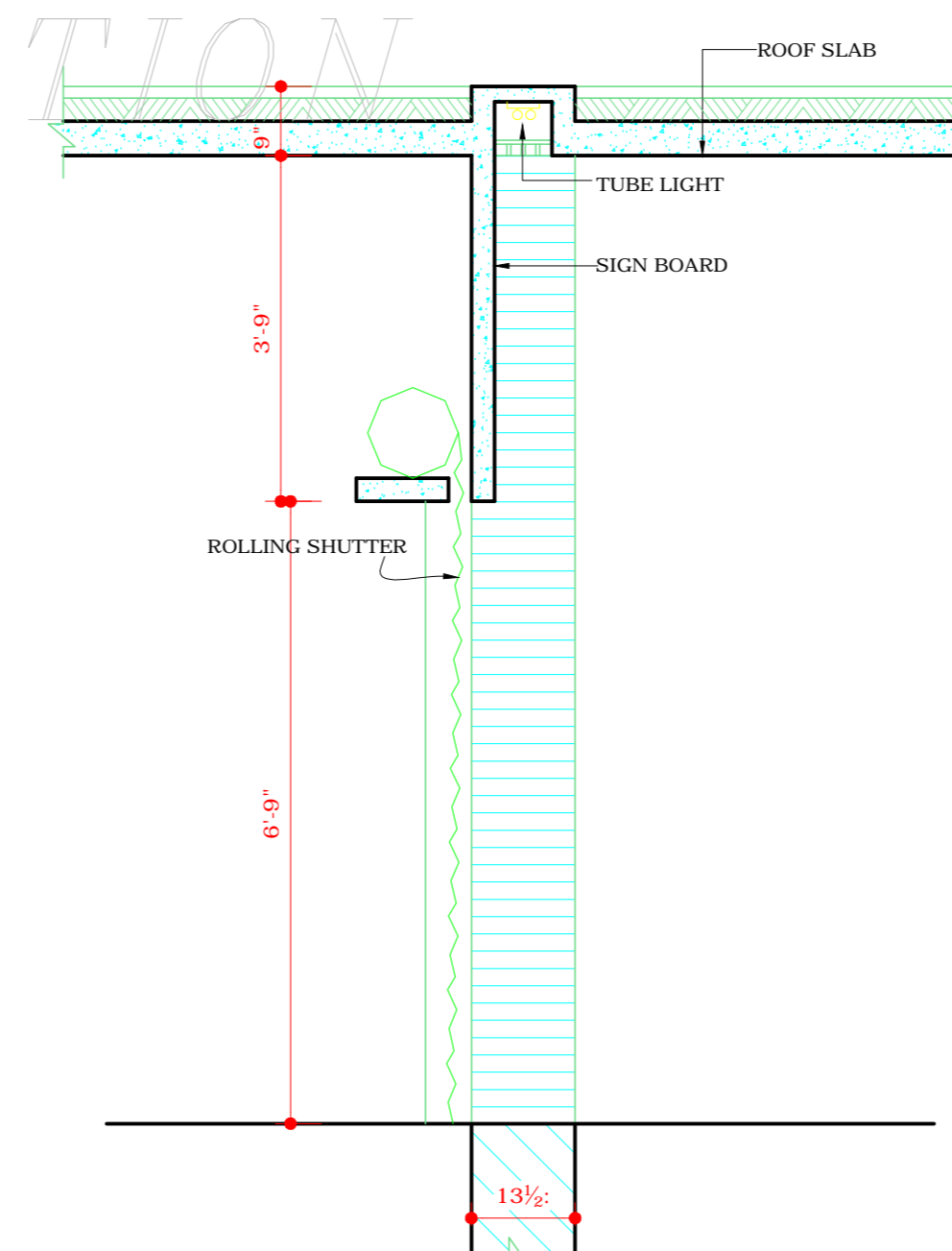
SECTION AT CC'

NOTE:  
THIS DRAWING HAS BEEN COMPUTERISED ON 27-07-09  
FROM ORIGINAL DRG. No. 2 JOB No. 710

DEPARTMENT OF URBAN PLANNING  
CHANDIGARH ADMINISTRATION



PLAN SHOWING THE RELATION BETWEEN  
COAL DEPOT, BOOTHS & LAV. BLOCK  
SCALE: 1/16" TO A FOOT



SECTION AT BB'  
SCALE 1/2" TO A FOOT

Sd/-  
31-7-70  
CHIEF ADMINISTRATOR

DISCLAIMER

THOUGH EVERY CARE HAS BEEN TAKEN TO PROVIDE THE CORRECT VERSION OF THE ARCHITECTURAL CONTROL ON THIS DIGITIZED FORMAT, YET IN CASE OF ANY DISCREPANCY, THE MASTER COPY OF THE ARCHITECTURAL CONTROL APPLICABLE ON EACH SUCH SITE, AS AVAILABLE IN THE COMMERCIAL RECORD OF THE OFFICE OF CHIEF ARCHITECT OR HER HIS INTERPRETATION WILL OVERRULE THE DIGITIZED FORMAT.

REVISIONS

Sd/- M.N. SHARMA  
29.7.70  
CHIEF ARCHITECT

Sd/- R.R. HANDA  
27.7.70  
SENIOR ARCHITECT

Sd/- IQBAL SINGH  
25.7.70  
ASSTT. ARCHITECT

Sd/- O.P. MEHTA  
25.7.70  
ARCHITECT

OFFICE OF THE  
CHIEF ARCHITECT  
CHANDIGARH

SCALE: 1/4" TO A FOOT

DATE: 22.7.70

Sd/-  
M.K. BANSAL  
DRAWN

2  
DRG No.

710  
JOB No.

COAL DEPOT  
SECTOR 28-D

PLAN, ELEVATIONS &  
SECTION