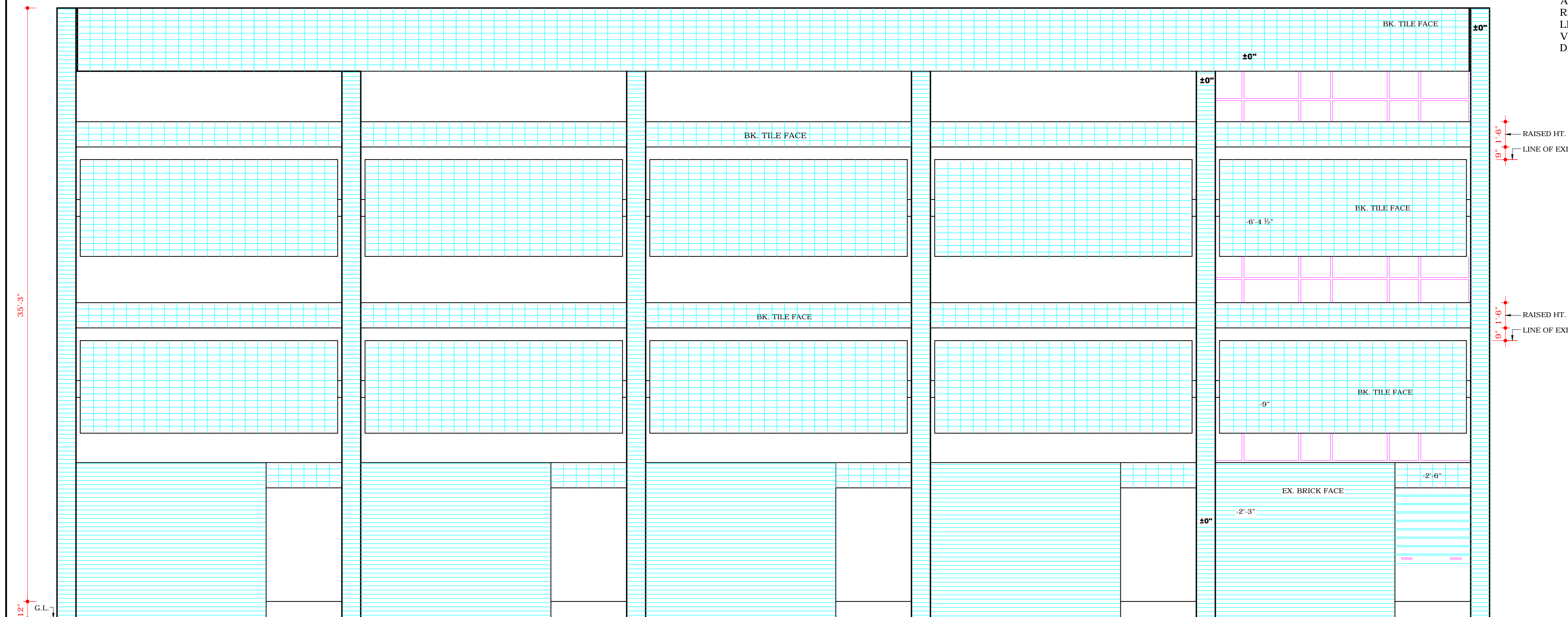


FRONT ELEVATION



REAR ELEVATION

APPROVAL OF THE CHIEF ADMINISTRATOR RECEIVED REGARDING MAKING THE SKY LIGHT ON THE TOP TERRACE IS OPTIONAL VIDE HIS OFFICE MEMO NO. 139-UTFI(3)-2K/1201 DATED:- 8-2-2000.

Sd/- (RAKESH SINGH)  
CHIEF ADMINISTRATOR  
Sd/- 13-1-2000  
(SARABJEET SINGH)  
CHIEF ARCHITECT  
Sd/- 13-1-2000  
(A.K. SABHARWAL)  
SENIOR ARCHITECT  
Sd/- 13-1-2000  
(K.I.S.VIRDI)  
ARCHITECT  
Sd/- 13-1-2000  
(RAJEEV MEHTA)  
ASSTT. ARCHITECT

DEPARTMENT OF ARCHITECTURE

S.NO.	NOTES
1.	THIS DRAWING IS THE PROPERTY OF DEPTT. OF ARCHITECTURE, U.T. CHANDIGARH, FORMERLY OF THE GOVT. OF P.B. AND MUST NOT BE ALTERED, COPIED OR USED IN WHOLE OR IN PART WITHOUT THE PERMISSION OF THIS DEPTT. IN WRITING.

NOTE:  
THIS DRAWING IS THE COMPUTERISED REPRODUCTION OF ORIGINAL DRG. No. 6, JOB No. 883 DATED - 04.06.08  
1. HEIGHT OF REAR PARAPET INCREASED FROM 3'-0" TO 5'-3" AT 1ST AND 2ND FLOOR APPROVAL RECEIVED FROM FINANCE SECRETARY VIDE MEMO 2228-UTFI(4)94/ 15225 DATED:- 8<sup>1</sup>/<sub>2</sub>/24.11.94

S.NO.	DESCRIPTION
REVISIONS	
Sd/- CHIEF ARCHITECT	Sd/- SENIOR ARCHITECT
Sd/- ARCHITECT	Sd/- ASSTT. ARCHITECT

OFFICE OF THE CHIEF ARCHITECT CHANDIGARH. U.T.

SCALE = FOUR FEET TO AN INCH	DATE: 19.12.74
DRAWN A.S.RATRA	JOB NO. 883
CHECKED	DRG.NO. 6

SHOP CUM-OFFICES / FLATS SECTORS 31-D AND 47-C AND 37-C & 37-D & 36-D ARCH. CONTROL SHEET.

ELEVATIONS

DISCLAIMER

THOUGH EVERY CARE HAS BEEN TAKEN TO PROVIDE THE CORRECT VERSION OF THE ARCHITECTURAL CONTROL ON THIS DIGITIZED (PDF) FORMAT. YET IN CASE OF ANY DISCREPANCY, THE MASTER COPY OF THE ARCHITECTURAL CONTROL APPLICABLE ON EACH SUCH SITE, AS AVAILABLE IN THE COMMERCIAL RECORD OF THE OFFICE OF CHIEF ARCHITECT OR HER/HIS INTERPRETATION WILL OVERRULE THE DIGITIZED FORMAT.

Sd/- (S.P.KHURANA) ASSTT. ARCHITECT	Sd/- 26.4.94 (S.S. SANDHU) SENIOR ARCHITECT	Sd/- 3.5.94 (S.K. MIDHA) CHIEF ARCHITECT	Sd/- 8.11.94 (A.R. TALWAR) CHIEF ADMINISTRATOR	Sd/- SEWA SINGH 18.2.03 CHIEF ADMINISTRATOR
--	---	--	--	---