

DEPARTMENT OF ARCHITECTURE U.T.

S.No. NOTES

1. THIS DRG. IS THE PROP. OF THE DEPTT. OF ARCH. CHD. U.T. FORMERLY OF THE P.B. GOVT & MUST NOT BE ALTERED, COPIED OR USED IN WHOLE OR IN PARTS WITHOUT THE PERMISSION OF THIS DEPTT. IN WRITING.

SIZE OF STEEL SHUTTERING PATTERN

a	4'-0"X2'-3"
b	2'-0"X4'-0"
c	2'-0"X5'-0"
d	15"X4'-0"
e	2'-0"X3'-6"

APPROVAL RECEIVED FROM THE CHIEF ADMINISTRATOR CHD. ADMN. VIDE MEMO No. 4269-U.T.F.I.(4)-89/11304, DATED 8-9-89

NOTE:- THIS DRAWING HAS BEEN COMPUTERISED FROM DRG. No. 14 JOB No. 2183

S.NO. DESCRIPTION SIGN DATE

REVISIONS

Sd/- O.P. MEHTA
10.7.89
CHIEF ARCHITECT

Sd/- S.K. MIDHA
7.7.89
SENIOR ARCHITECT

Sd/- SARBJEET SINGH
7-7-89
ARCHITECT

Sd/- RAKESH GUPTA
ASSTT. ARCHITECT

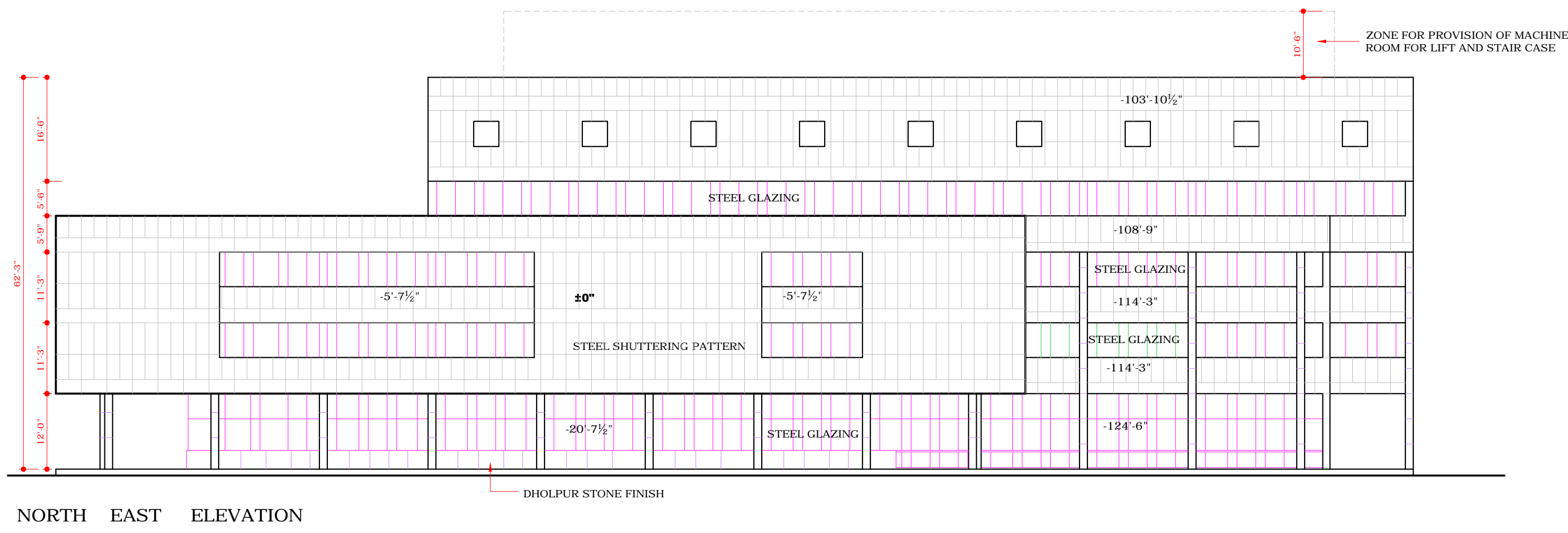
OFFICE OF THE CHIEF ARCHITECT CHANDIGARH

SCALE = 1/8" = 1' TO A FOOT DATE - 7.7.89

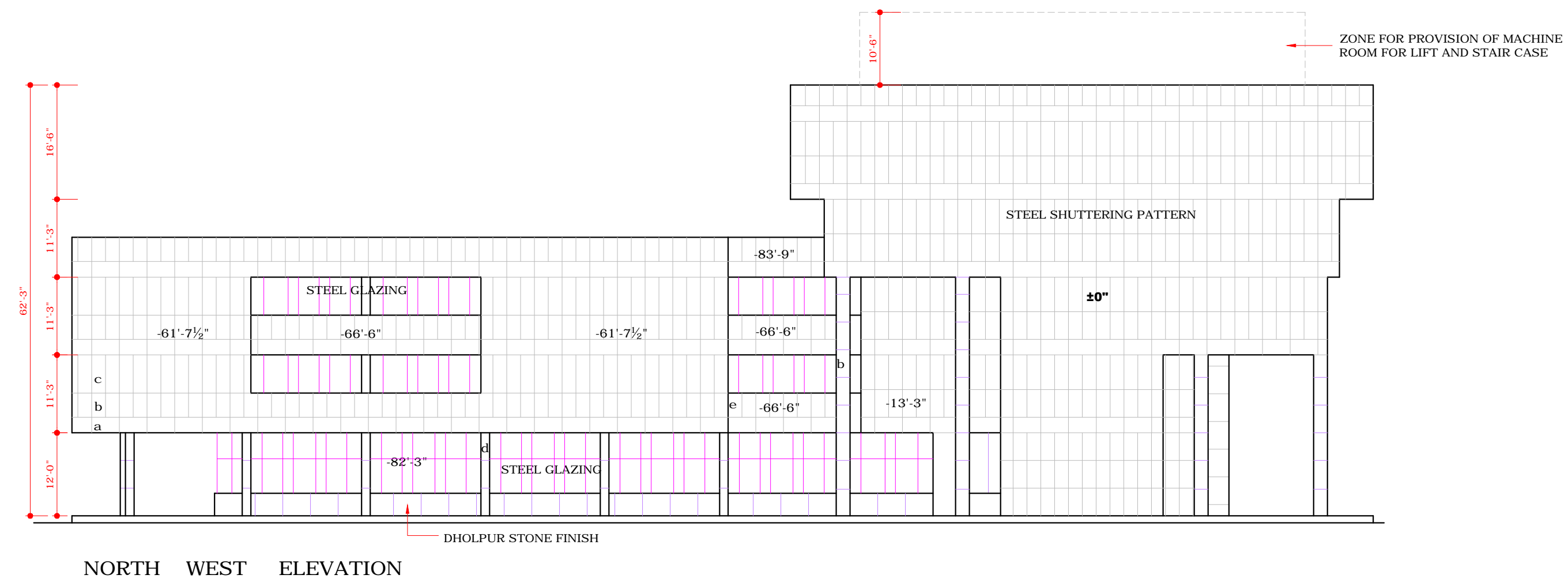
DEALT BY ROMESH MAHAJAN	JOB No. 2183	DRG. No. 14
CHECKED BY ROMESH MAHAJAN		

ARCHITECTURAL CONTROL FOR SPECIAL BLOCKS ALONG V2B ROAD SECTOR 34

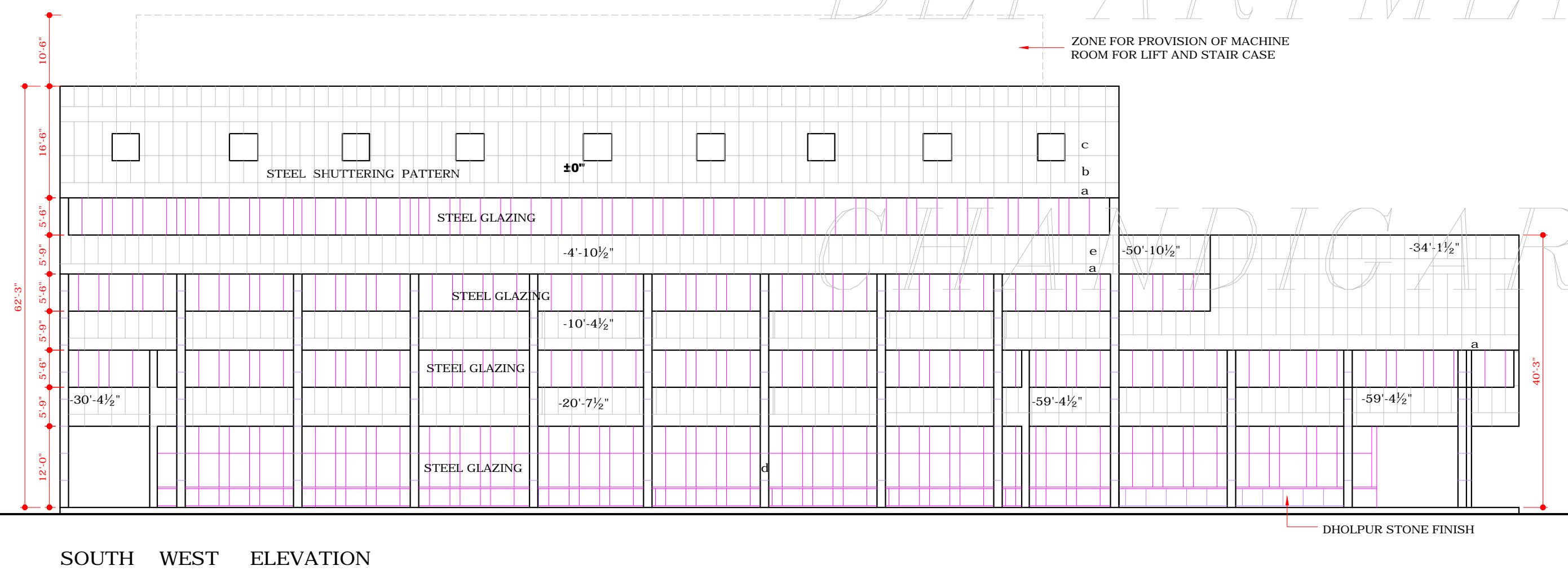
ELEVATIONS



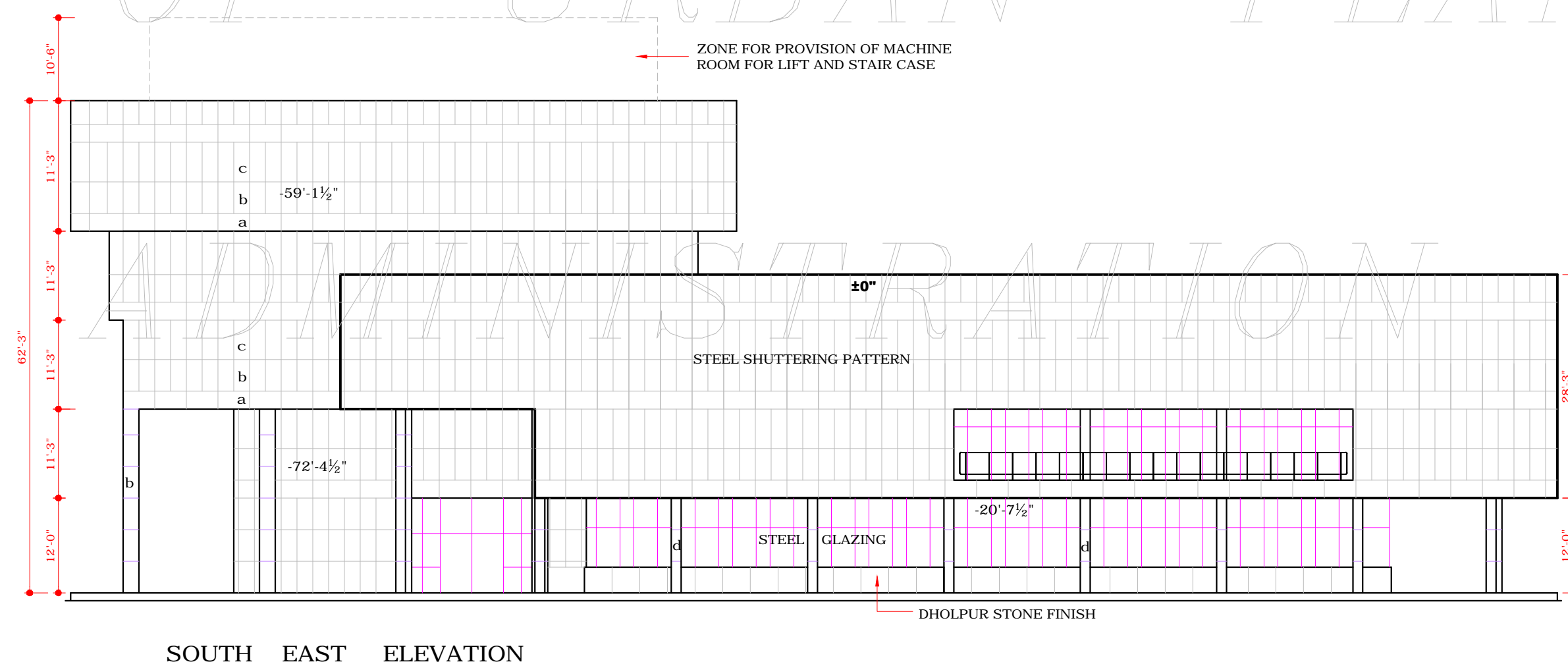
NORTH EAST ELEVATION



NORTH WEST ELEVATION



SOUTH WEST ELEVATION



SOUTH EAST ELEVATION

COPYRIGHT:

DEPARTMENT OF URBAN PLANNING

CHANDIGARH

ADMINISTRATION

DISCLAIMER

THOUGH EVERY CARE HAS BEEN TAKEN TO PROVIDE THE CORRECT VERSION OF THE ARCHITECTURAL CONTROL ON THIS DIGITIZED (PDF) FORMAT, YET IN CASE OF ANY DISCREPANCY, THE MASTER COPY OF THE ARCHITECTURAL CONTROL APPLICABLE ON EACH SUCH SITE, AS AVAILABLE IN THE COMMERCIAL RECORD OF THE OFFICE OF CHIEF ARCHITECT OR HER/HIS INTERPRETATION WILL OVERRULE THE DIGITIZED FORMAT.

sd/-
CHIEF ADMINISTRATOR