

DEPARTMENT OF
ARCHITECTURE U.T.

S.No. NOTES

1. THIS DRG. IS THE PROP. OF THE DEPTT. OF ARCH. CHD. U.T. FORMERLY OF THE P.B. GOVT & MUST NOT BE ALTERED, COPIED OR USED IN WHOLE OR IN PARTS WITHOUT THE PERMISSION OF THIS DEPTT. IN WRITING.

APPROVAL RECEIVED FROM THE CHIEF ADMINISTRATOR CHD. ADMN. VIDE MEMO No. 4269-U.T.F.1.(4)-89/11304, DATED 8-9-89

NOTE:- THIS DRAWING HAS BEEN COMPUTERISED FROM DRG. No. 15 JOB No. 2183

S.No. DESCRIPTION SIGN DATE

REVISIONS

Sd/- O.P. MEHTA
10.7.89
CHIEF ARCHITECT

Sd/- S.K. MIDHA
7.7.89
SENIOR ARCHITECT

Sd/- SARBUJET SINGH
7.7.89
ARCHITECT

Sd/- RAKESH GUPTA
7.7.89
ASSTT. ARCHITECT

OFFICE OF
THE CHIEF ARCHITECT
CHANDIGARH

SCALE = 1/8" TO A FOOT DATE - 7.7.89

REDRAWN BY
VJAY KUMAR

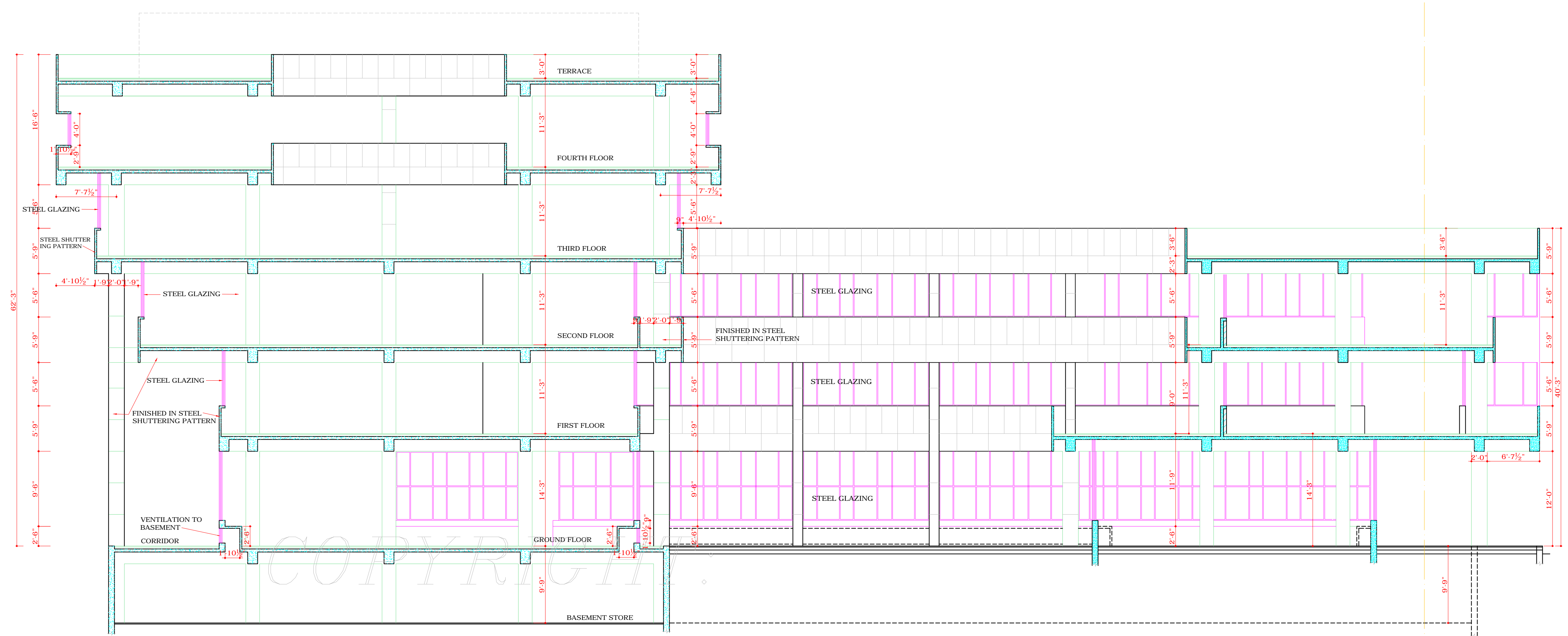
CHECKED BY
ROMESH MAHAJAN

JOB No.
2183

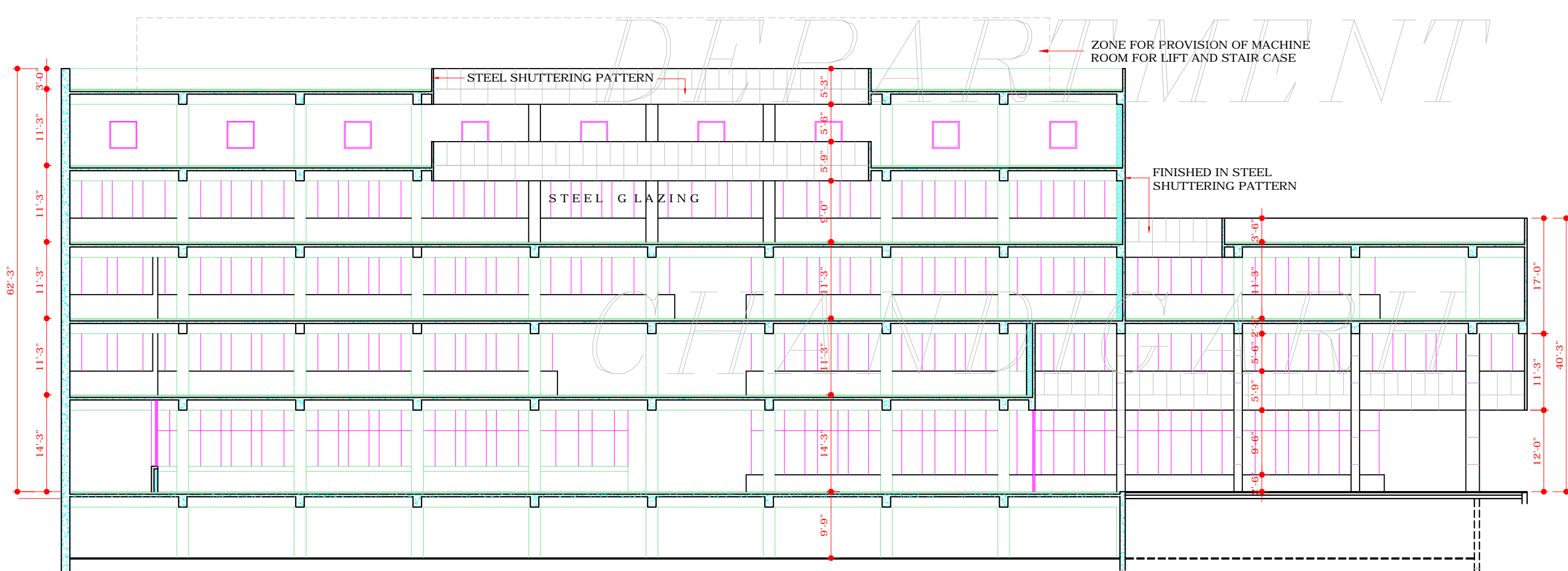
DRG. No.
15

ARCHITECTURAL CONTROL
FOR SPECIAL BLOCKS ALONG
V2B ROAD SECTOR 34

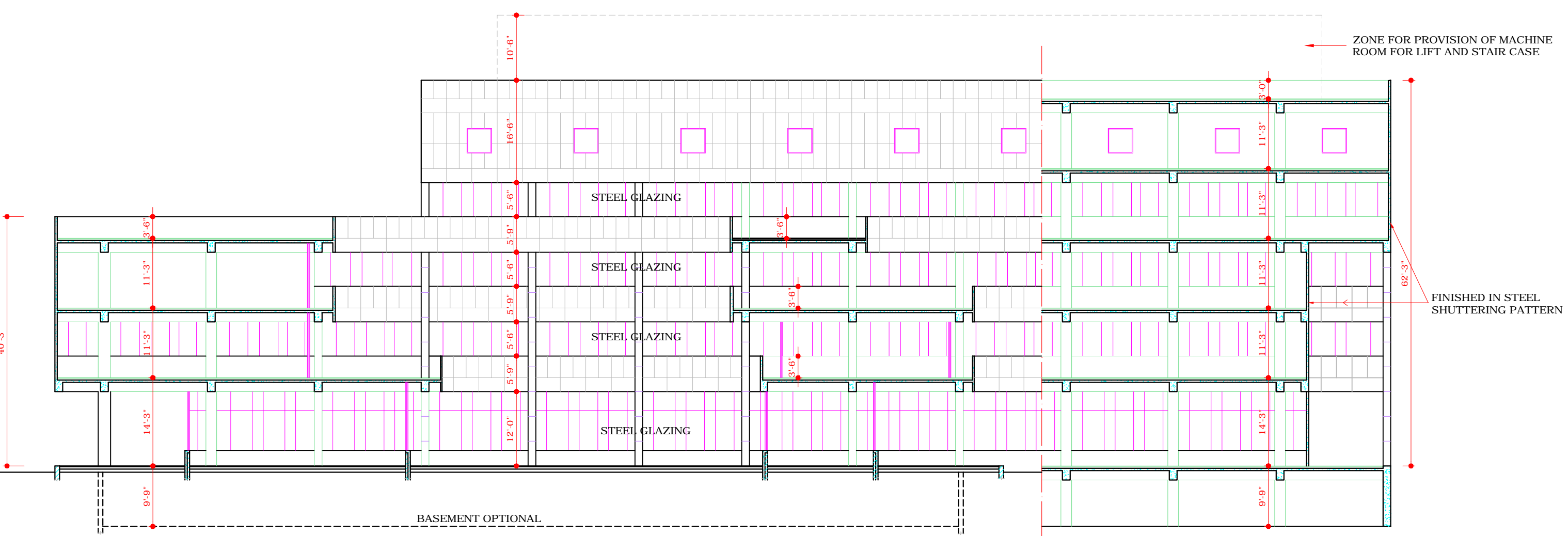
SECTIONS



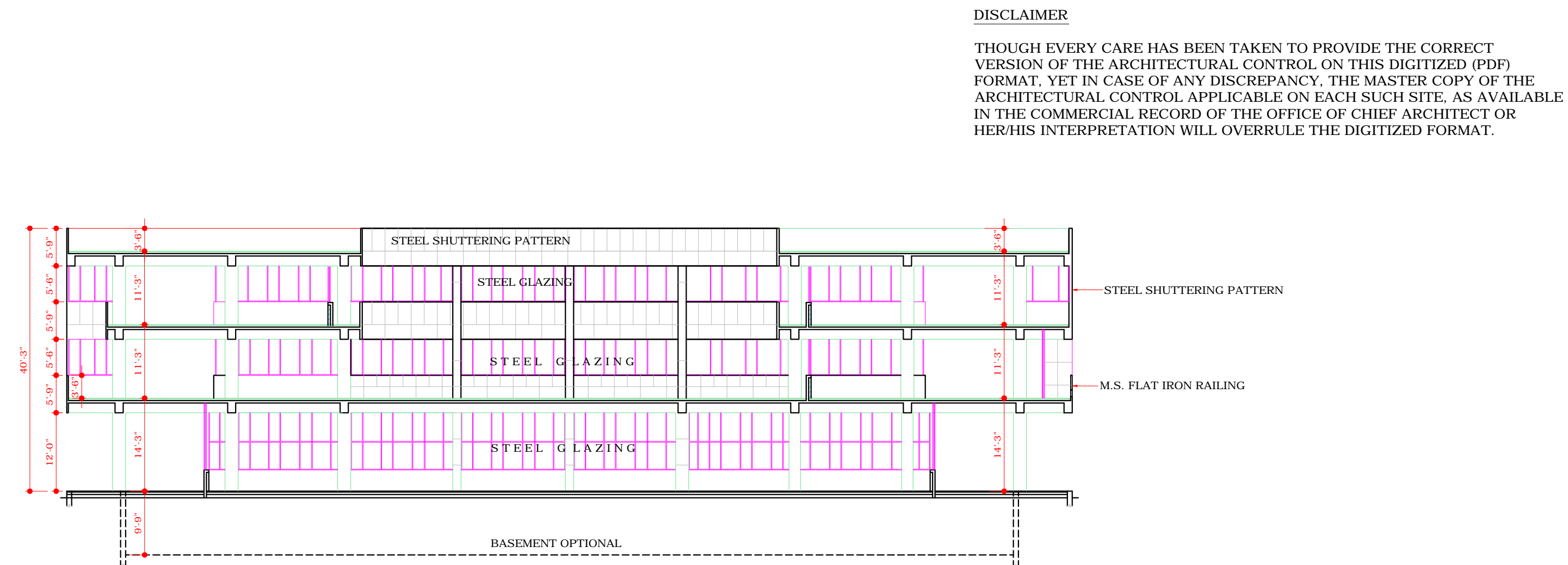
SECTION AT A-A



SECTION AT B-B



SECTION AT C-C



SECTION AT D-D

DISCLAIMER

THOUGH EVERY CARE HAS BEEN TAKEN TO PROVIDE THE CORRECT VERSION OF THE ARCHITECTURAL CONTROL ON THIS DIGITIZED (PDF) FORMAT, YET IN CASE OF ANY DISCREPANCY, THE MASTER COPY OF THE ARCHITECTURAL CONTROL APPLICABLE ON EACH SUCH SITE, AS AVAILABLE IN THE COMMERCIAL RECORD OF THE OFFICE OF CHIEF ARCHITECT OR HER/HIS INTERPRETATION WILL OVERRULE THE DIGITIZED FORMAT.

sd/-
CHIEF ADMINISTRATOR