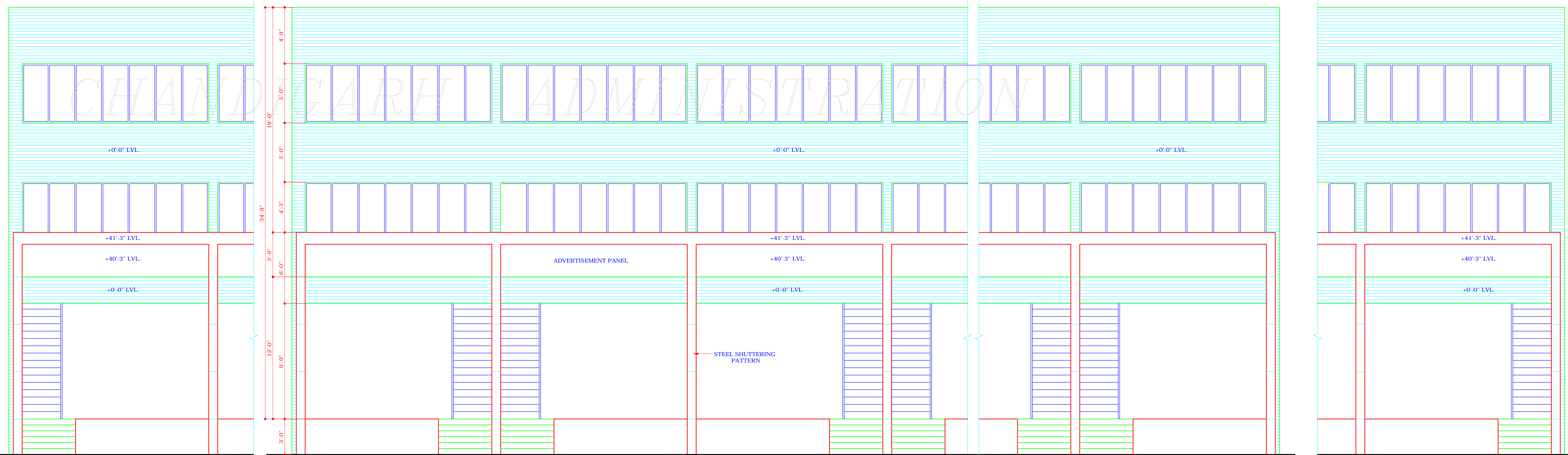


REAR ELEVATION (SHOP NO. 150)

REAR ELEVATION

REAR ELEVATION (SHOP NO. 129)



FRONT ELEVATION (SHOP NO. 129)

FRONT ELEVATION

FRONT ELEVATION (SHOP NO. 150)

THE APPROVAL OF THE CHIEF ADMINISTRATOR
RECEIVED VIDE MEMO. NO. 3103-UTPH(S)-2002/8400
DATED : 3.10.2002
-sd/-
CHIEF ADMINISTRATOR
CHANDIGARH ADMINISTRATION

DISCLAIMER
THOUGH EVERY CARE HAS BEEN TAKEN TO
PROVIDE THE CORRECT VERSION OF THE
ARCHITECTURAL CONTROL ON THIS DIGITIZED
(PDF) FORMAT, YET IN CASE OF ANY
DISCREPANCY, THE MASTER COPY OF THE
ARCHITECTURAL CONTROL, APPLICABLE ON
EACH SUCH SITE, AS AVAILABLE IN THE
COMMERCIAL RECORD OF THE OFFICE OF THE
CHIEF ARCHITECT OR HER/HS INTERPRETATION
WILL OVERRULE THE DIGITIZED FORMAT.

S.NO. NOTES

S.NO.	DESCRIPTION	SIGN	DATE
REVISIONS			

-SD-
SARBJEET SINGH
27.08.2002
CHIEF ARCHITECT

-SD-
RENU SAIGAL
SENIOR ARCHITECT

-SD-
K.L.S VIRDDI
26.08.02
ARCHITECT

-SD-
RAJIV MEHTA
26.08.2002
ASSTT ARCHITECT

OFFICE OF THE
CHIEF ARCHITECT &
SECRETARY
CHANDIGARH U.T.

SCALE : 1/4" = 1'-0"

DATE : 14.08.02

DRAWN BY	JOB NO. 2313	DRG. NO. 25
CHECKED BY		

ARCH. CONTROL FOR FRUIT/
VEGETABLE SHOP CUM OFFICE &
AUCTION PLATFORM IN SECOND
GRAIN,FRUIT & VEGETABLE MARKET
IN WEST OF SEC-39,CHD. (SIZE
16'-6"x82'-6") SHOP NOS. 101 TO 178

FRONT & REAR ELEVATIONS