

S.No. NOTES:-

THIS DRAWING IS THE PROPERTY OF THE DEPTT. OF ARCHITECTURE UT, CHD. FORMERLY OF THE P.B. GOVT. & MUST NOT BE ALTERED COPIED OR USED IN WHOLE OR IN PART WITHOUT THE PERMISSION OF THIS DEPTT. IN WRITING.

THIS COMPUTER DRG. HAS BEEN REPRODUCED FROM ORIGINAL DRG. No. 10 JOB No. 2222

S.No.	DESCRIPTION	SIGN	DATE
REVISIONS			

CHIEF ADMINISTRATOR

SD:-  
(WAZIR CHAND MALHOTRA)  
CHIEF ARCHITECT

SD:-  
(R.S. LALL)  
SENIOR ARCHITECT

SD:-  
(RAMINDER SINGH)  
ARCHITECT

(AVTAR SINGH)  
ASSTT. ARCHITECT

OFFICE OF THE  
CHIEF ARCHITECT U.T.  
CHANDIGARH. ADMN.

SCALE:- 1/4" = 1'-0"

DATE- 06-05-85

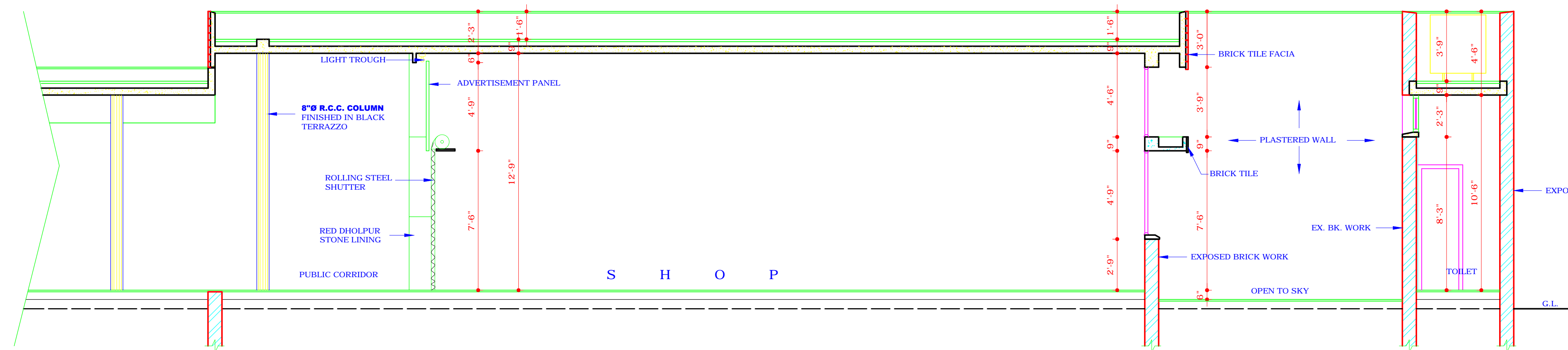
RASHIM GUPTA  
DEALT BY

DRG. No.  
10

JOB No.  
2222

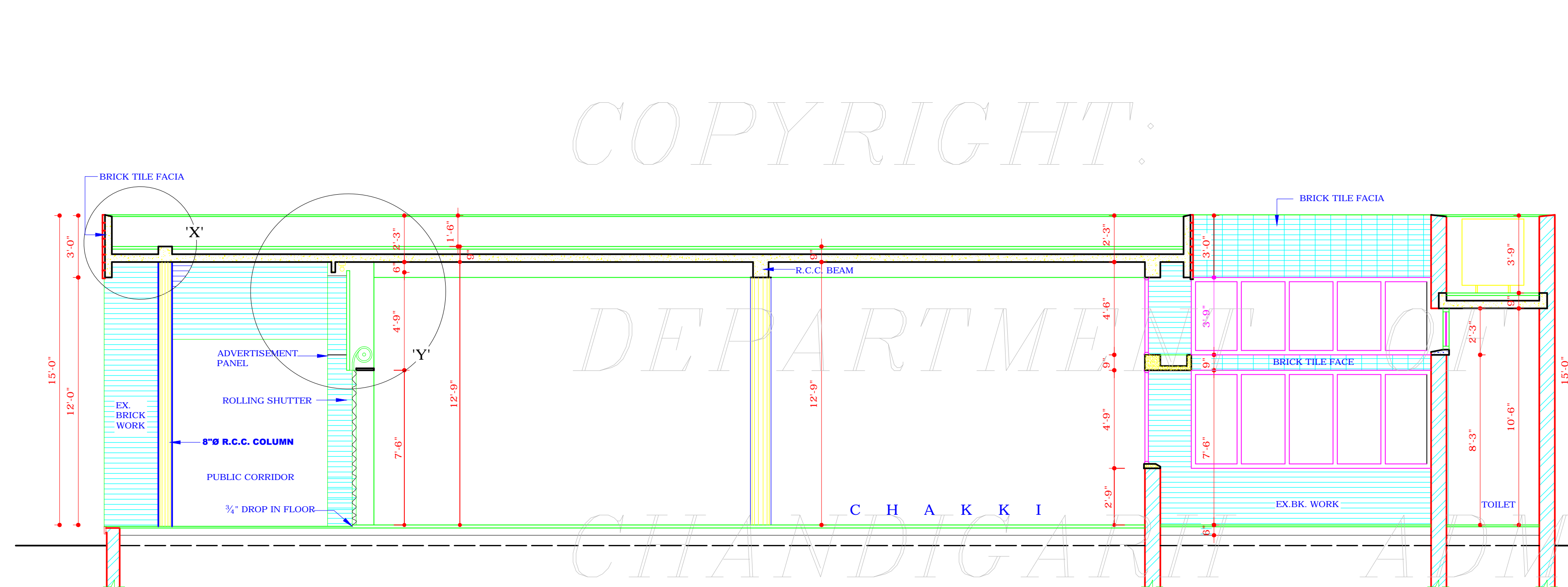
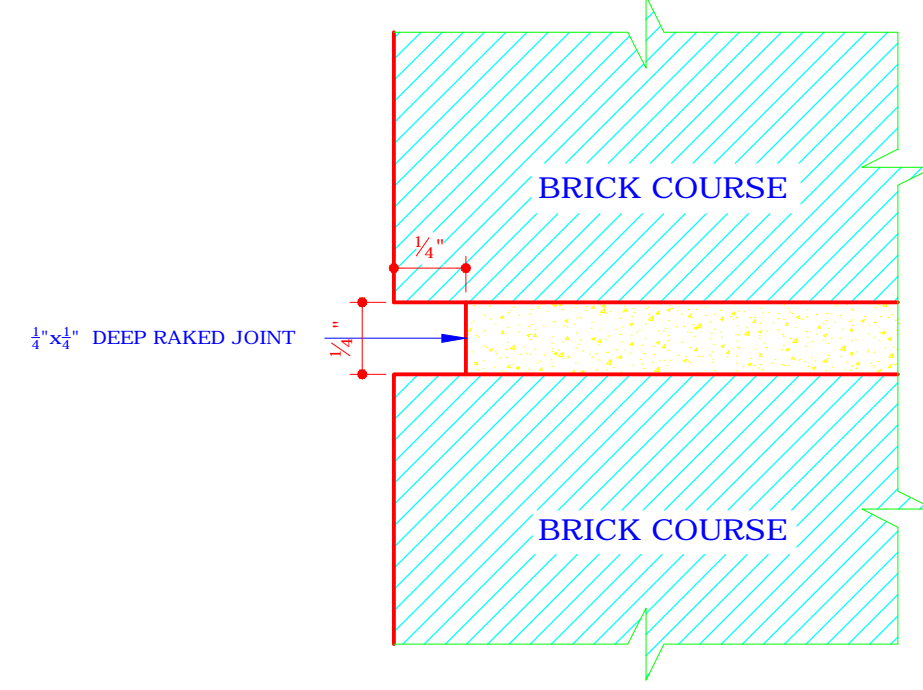
ARCH. CONTROL FOR  
CHAKKI &  
SEMI-INDUSTRIAL SHOPS IN  
SECTOR - 44 D

SECTIONS

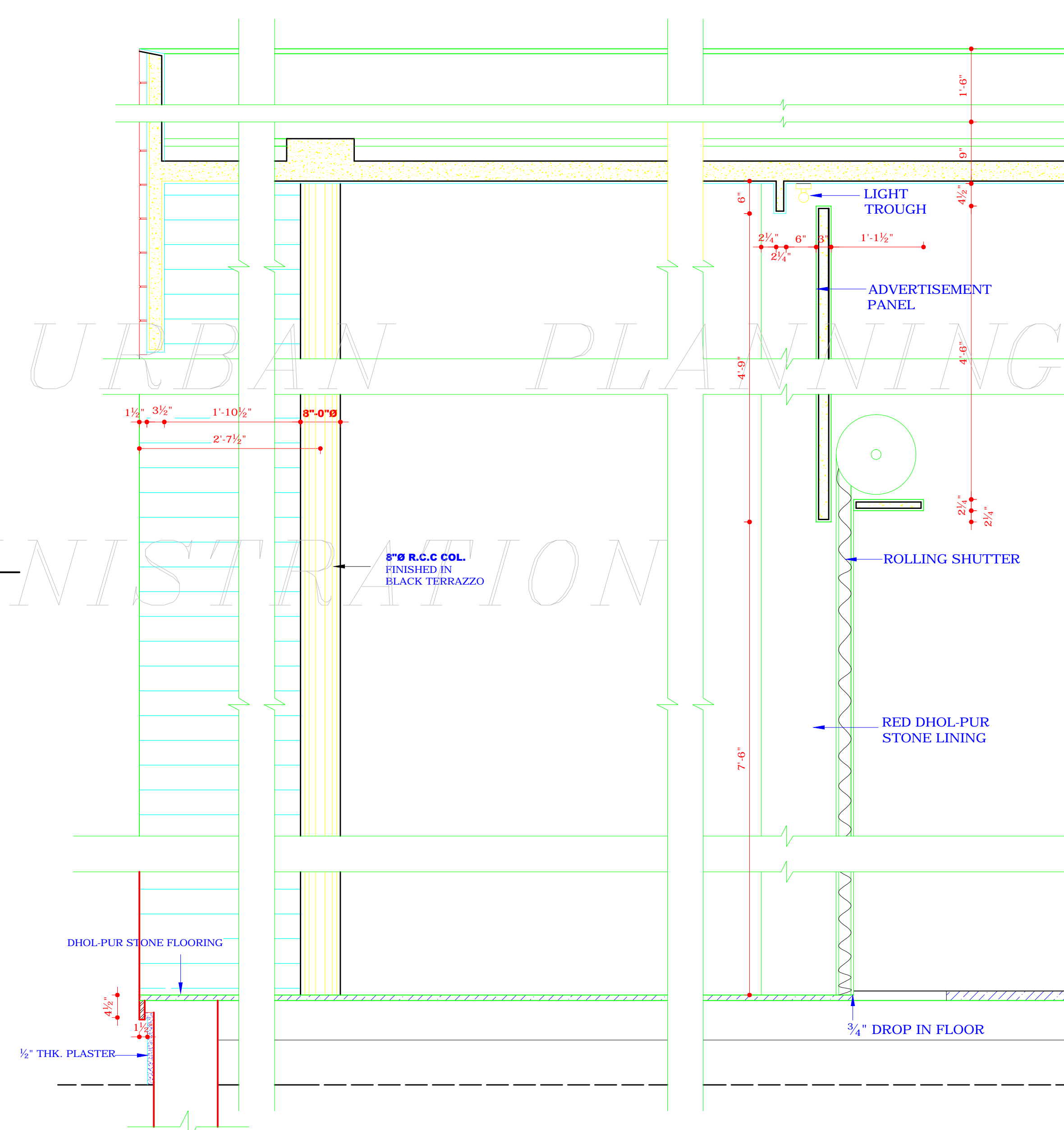


SECTION AT D-D

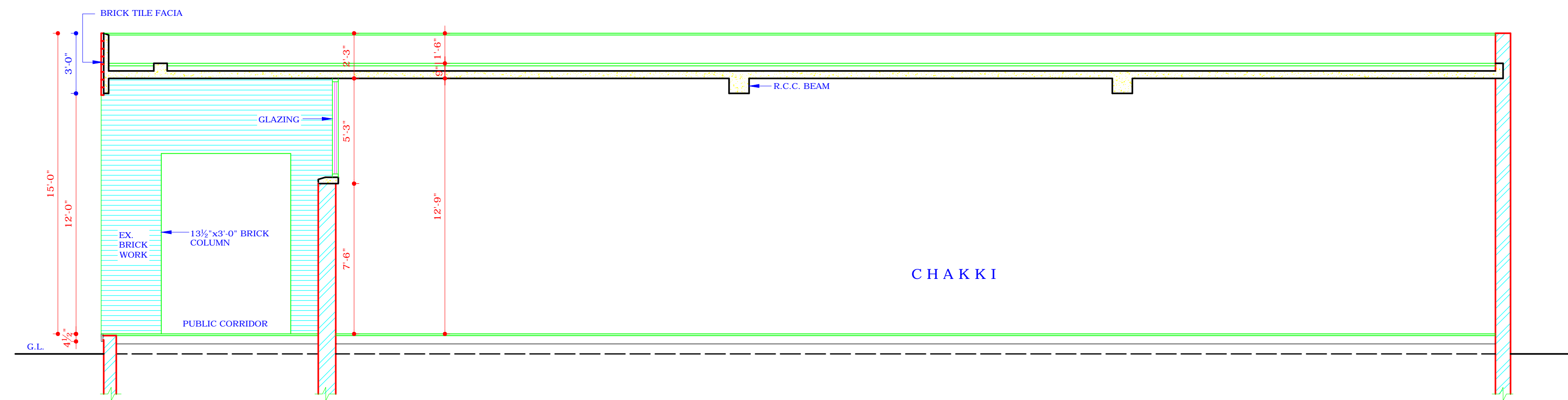
DETAIL "A" OF DEEP STRUCK  
LIME SURKHI POINTING



SECTION AT C-C



1/8" F.S. DETAIL AT 'X' & 'Y'



SECTION AT B-B

DISCLAIMER

THOUGH EVERY CARE HAS BEEN TAKEN TO PROVIDE THE CORRECT VERSION OF THE ARCHITECTURAL CONTROL ON THIS DIGITIZED (PDF) FORMAT, YET IN CASE OF ANY DISCREPANCY, THE MASTER COPY OF THE ARCHITECTURAL CONTROL APPLICABLE ON EACH SUCH SITE, AS AVAILABLE IN THE COMMERCIAL RECORD OF THE OFFICE OF CHIEF ARCHITECT OR HER/HIS INTERPRETATION WILL OVERRULE THE DIGITIZED FORMAT.

THE DRG. HAS BEEN APPROVED BY  
THE CHIEF ADMINISTRATOR VIDE HIS  
OFFICE MEMO No. 3561- UTPI (2)-85.  
9491/8.7.85.