

S.No. NOTES

THIS DRG. IS THE PROPERTY OF THE DEPTT. OF ARCHITECTURE U.T. CHD. FORMERLY OF THE P.B. GOVT. & MUST NOT BE ALTERED, COPIED OR USED IN WHOLE OR IN PART WITHOUT THE PERMISSION OF THIS DEPTT. IN WRITING.

NOTE:- THIS DRAWING HAS BEEN COMPUTERISED ON 27-04-10 FROM DRG. No. 12 JOB No. 2222.

S.No. DESCRIPTION SIGN DATE

REVISIONS

CHIEF ADMINISTRATOR

Sd/- 21-2-85 CHIEF ARCHITECT Sd/- R.S. LALL 14-2-85 SENIOR ARCHITECT

Sd/- RAMINDER SINGH 14-2-85 ARCHITECT Sd/- AVTAR SINGH 12-2-85 ASSTT. ARCHITECT

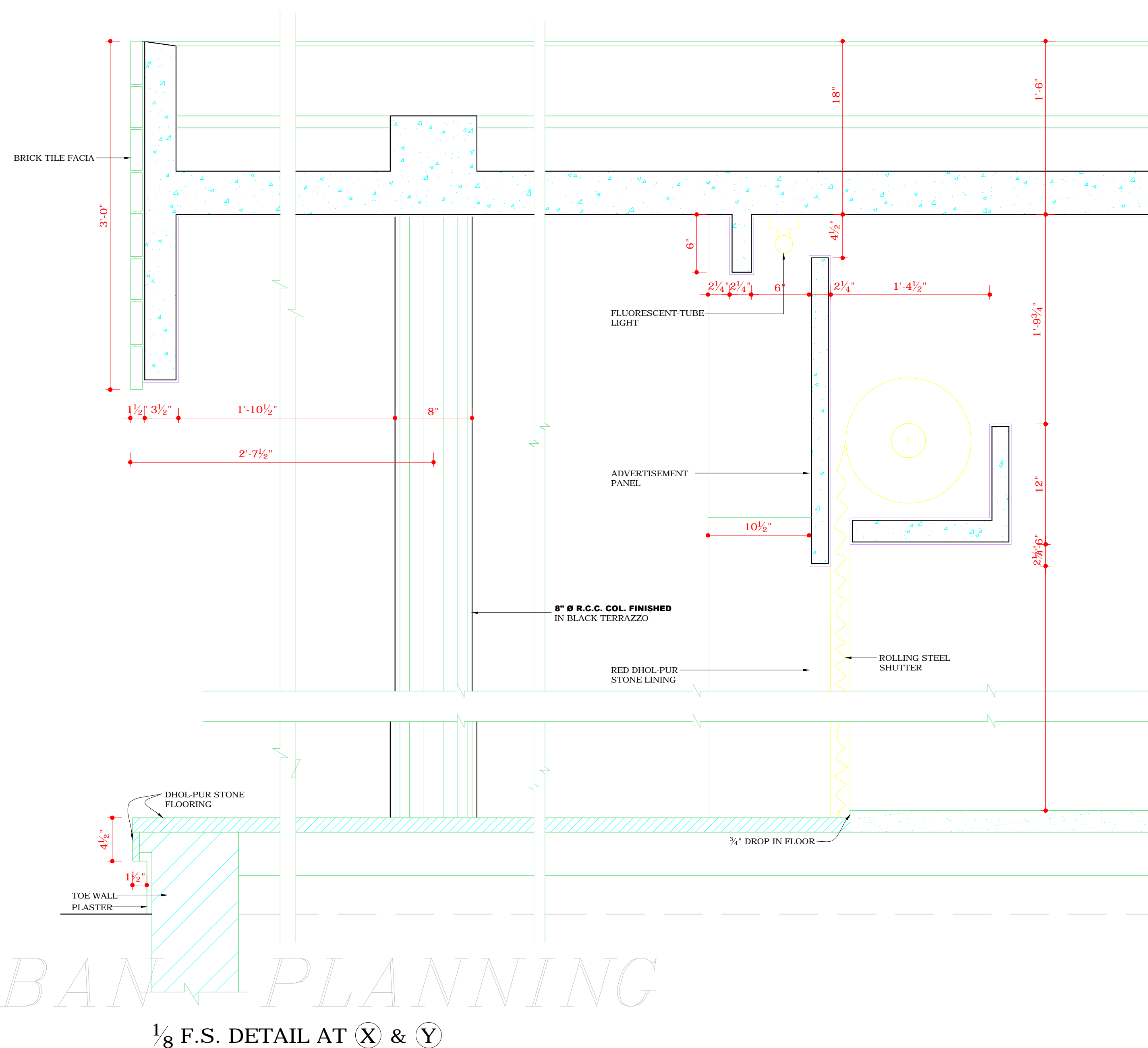
OFFICE OF THE CHIEF ARCHITECT U.T. CHD. ADMN.

SCALE: 1/4" TO A FT. DATE:- 6-2-85

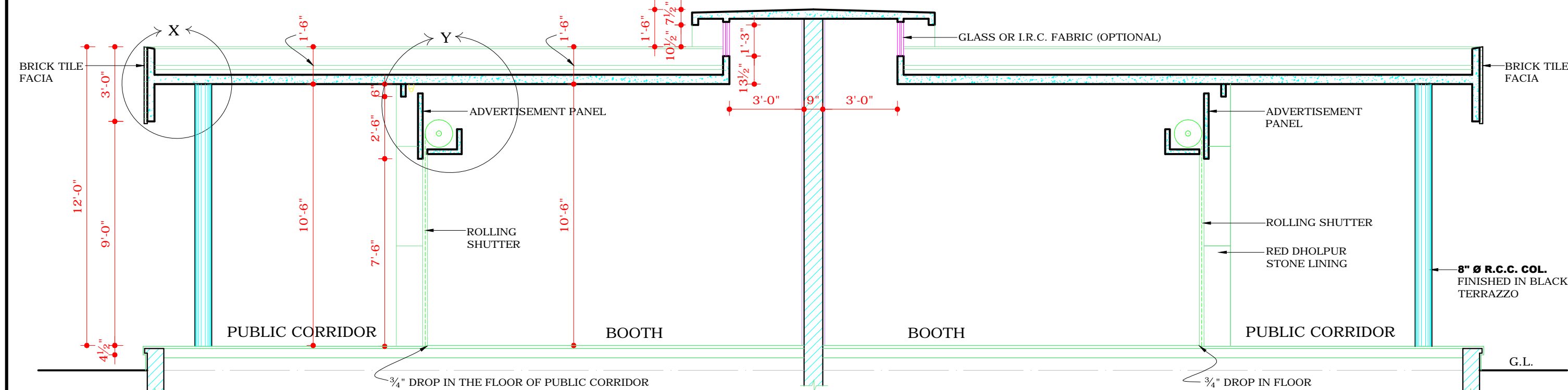
Sd/- RASHIM DEALT BY DRG. No. 12 JOB No. 2222 Sd/- CHECKED BY

ARCHITECTURAL CONTROL FOR BOOTHS IN SECTOR-44-D

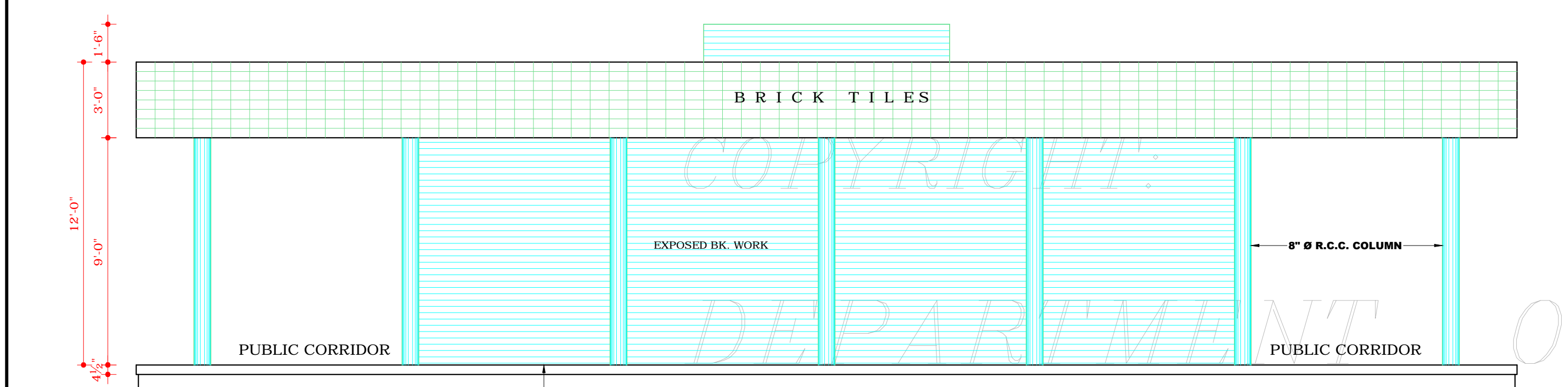
ELEVATION & SECTION



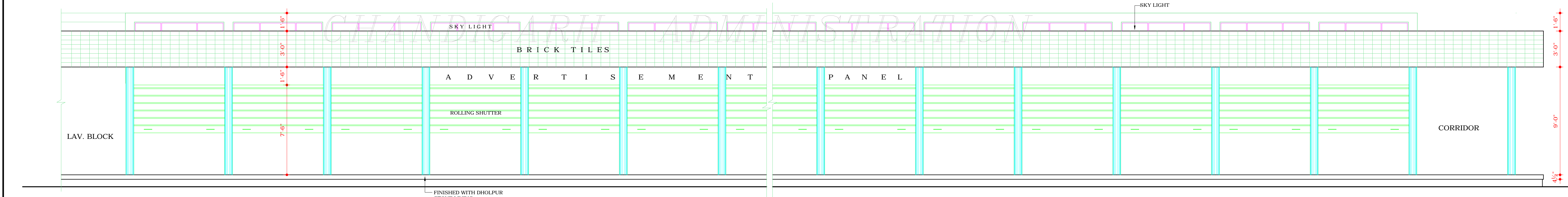
DETAIL "A" OF DEEP STRUCK LIME SURKHI POINTING.



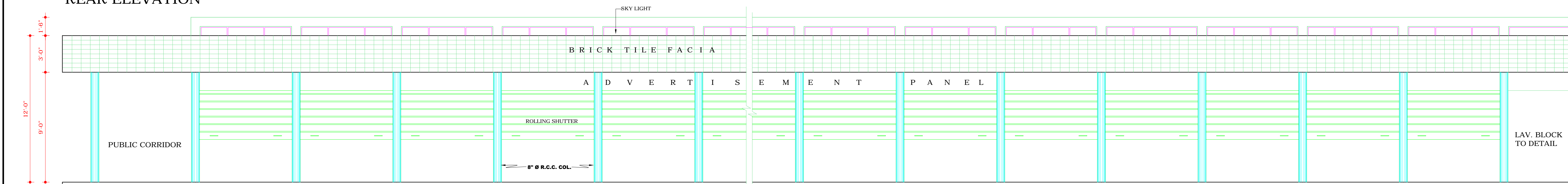
SECTION AT A-A



LEFT ELEVATION



REAR ELEVATION



FRONT ELEVATION

DISCLAIMER
THOUGH EVERY CARE HAS BEEN TAKEN TO PROVIDE THE CORRECT VERSION OF THE ARCHITECTURAL CONTROL ON THIS DIGITIZED (PDF) FORMAT. YET IN CASE OF ANY DISCREPANCY, THE MASTER COPY OF THE ARCHITECTURAL CONTROL APPLICABLE ON EACH SUCH SITE, AS AVAILABLE IN THE COMMERCIAL RECORD OF THE OFFICE OF CHIEF ARCHITECT OR HER HIS INTERPRETATION WILL OVERRULE THE DIGITIZED FORMAT.

THIS DRG. HAS BEEN APPROVED BY THE CHIEF ADMINISTRATOR VIDE HIS OFFICE MEMO No. 3711(UTP)(2)-85-94908.7.85