

DEPARTMENT OF ARCHITECTURE

S. No. NOTES

THE DRG. IS THE PROPERTY OF THE DEPARTMENT OF ARCHITECTURE U.T. OF CHANDIGARH FORMERLY OF GOVT. OF P.B. & MUST NOT BE ALTERED, COPIED OR USED IN WHOLE OR IN PART WITHOUT THE PERMISSION OF THIS DEPARTMENT IN WRITING

NOTES:- THIS DRAWING HAS BEEN COMPUTERISED ON 8-08-2017 FROM DRG. No. 4 JOB No. 442

ATTESTED

SD/- KUREKAR(25.9.72)
ASSTT. ARCHITECT

S. No.	DESCRIPTION	SIGN.	DATE
REVISIONS			

SD/- M.N. SHARMA CHIEF ARCHITECT	SD/- J.S. DETHE CHIEF ARCHITECT
ASSTT. ARCHITECT	SD/- O.P. MEHTA ARCHITECT

SD/- M.N. SHARMA
CHIEF ARCHITECT

SD/- J.S. DETHE
CHIEF ARCHITECT

SD/- O.P. MEHTA
ARCHITECT

OFFICE OF THE CHIEF ARCHITECT U.T. CHANDIGARH

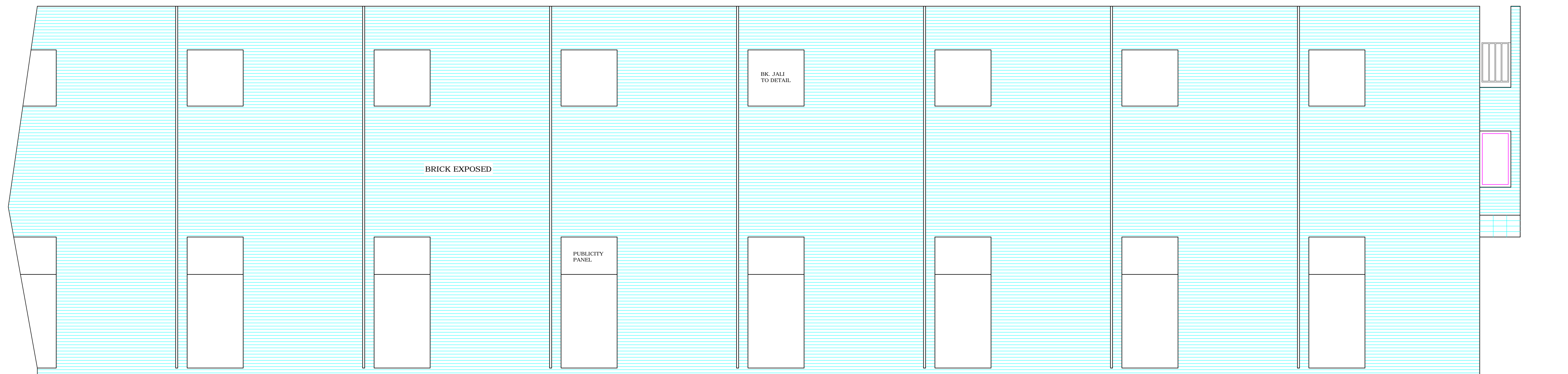
SCALE:- 1/2" INCH TO A FOOT DATE:-

DRAWN BY JOB No. DRG. No.
442 4

CHECKED BY

SHOP CUM FLAT IN SECTOR-47

REAR AND END ELEVATION

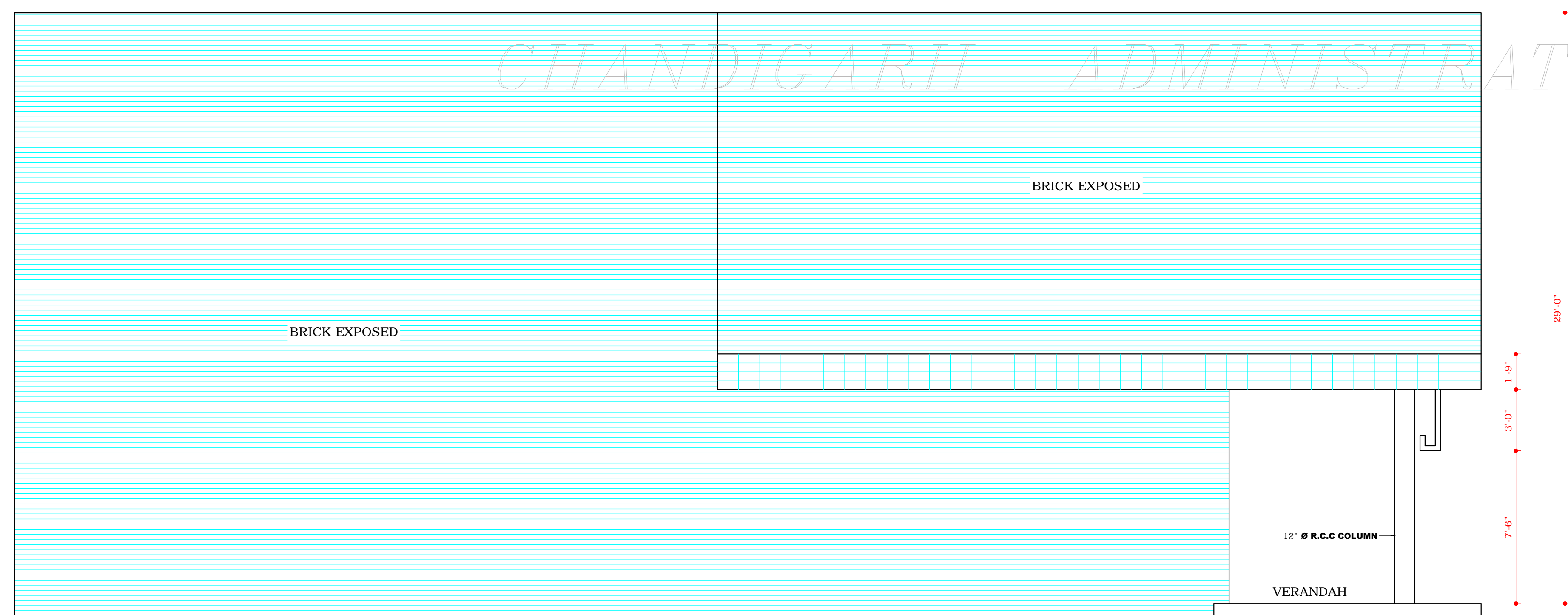


REAR ELEVATION

COPYRIGHT:

DEPARTMENT OF URBAN PLANNING

CHANDIGARH ADMINISTRATION



END ELEVATION

DISCLAIMER
THOUGH EVERY CARE HAS BEEN TAKEN TO PROVIDE THE CORRECT VERSION OF THE ARCHITECTURAL CONTROL ON THIS DIGITIZED (PDF) FORMAT, YET IN CASE OF ANY DISCREPANCY, THE MASTER COPY OF THE ARCHITECTURAL CONTROL APPLICABLE ON EACH SUCH SITE, AS AVAILABLE IN THE COMMERCIAL RECORD OF THE OFFICE OF CHIEF ARCHITECT OR HER/HIS INTERPRETATION WILL OVERRULE THE DIGITIZED FORMAT.

SD/- S.L. VERMA
CHIEF ADMINISTRATOR