

DEPARTMENT OF ARCHITECTURE.

S.No. NOTES

THIS DRG. IS THE PROPERTY OF THE DEPARTMENT OF ARCHITECTURE U.T. OF CHANDIGARH FORMERLY OF P.B. GOVT. & MUST NOT BE ALTERED COPIED OR USED IN WHOLE OR IN PART WITHOUT THE PERMISSION OF THE DEPTT. IN WRITING.

NOTES:
THIS DRAWING HAS BEEN COMPUTERISED ON 8-08-2017 FROM DRG. No. 3 JOB No. 442

ATTESTED
-SD-
KUREKAR
(S-4-72)
ASSTT. ARCHITECT.

S.No. DESCRIPTION

REVISIONS

Sd/ (M.N. SHARMA) CHIEF ARCHITECT	Sd/ (J.S. DETHI) SENIOR ARCHITECT
ASSTT. ARCHITECT	Sd/ (O.P. MEHTA) ARCHITECT

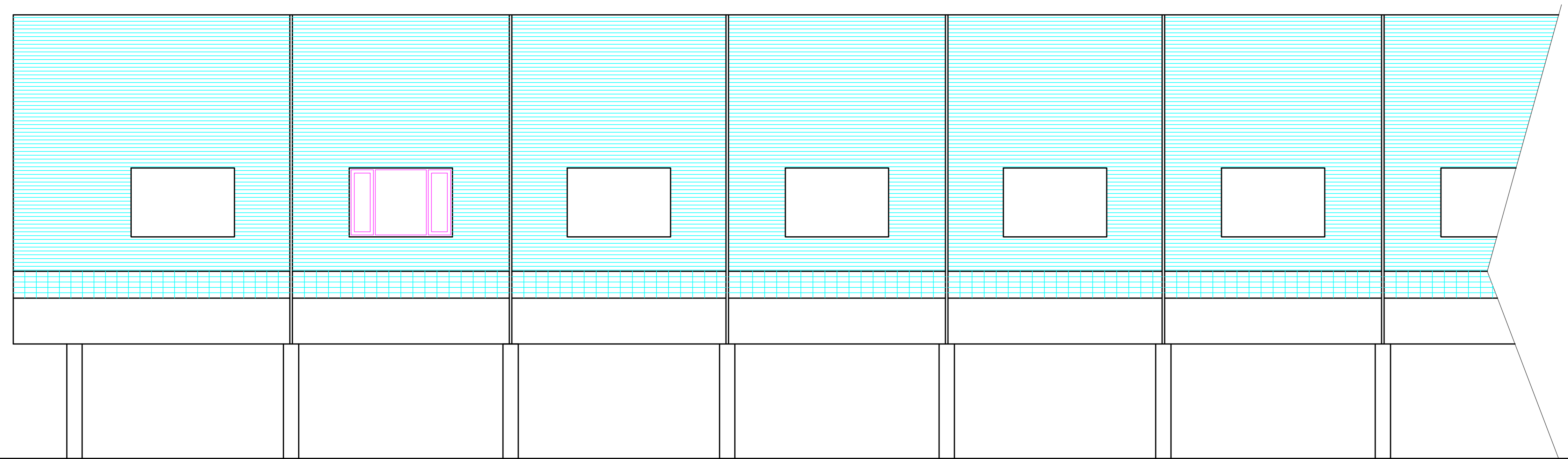
OFFICE OF THE CHIEF ARCHITECT CHANDIGARH.

SCALE = 4 FEET TO AN INCH DATE : 6.4.66

DRAWN BY	JOB NO. 442	DRG NO. 3
CHECKED BY		

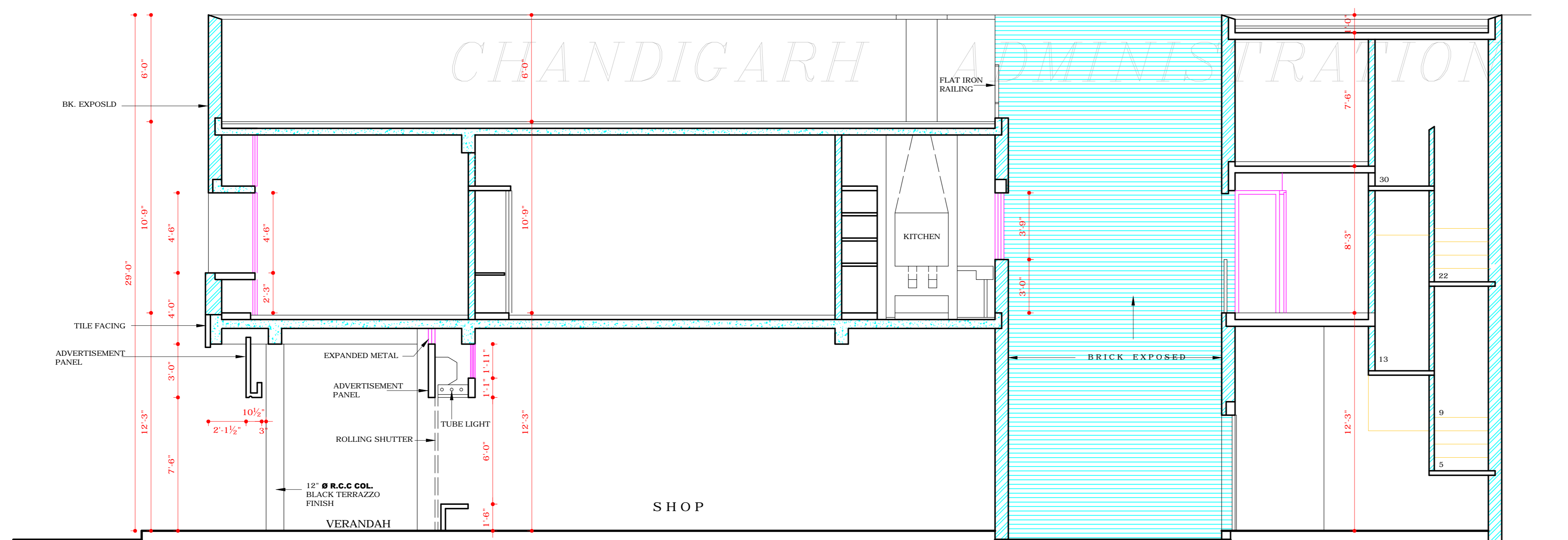
SHOP CUM FLAT IN SECTOR - 47

FRONT ELEVATION & SECTIONS.

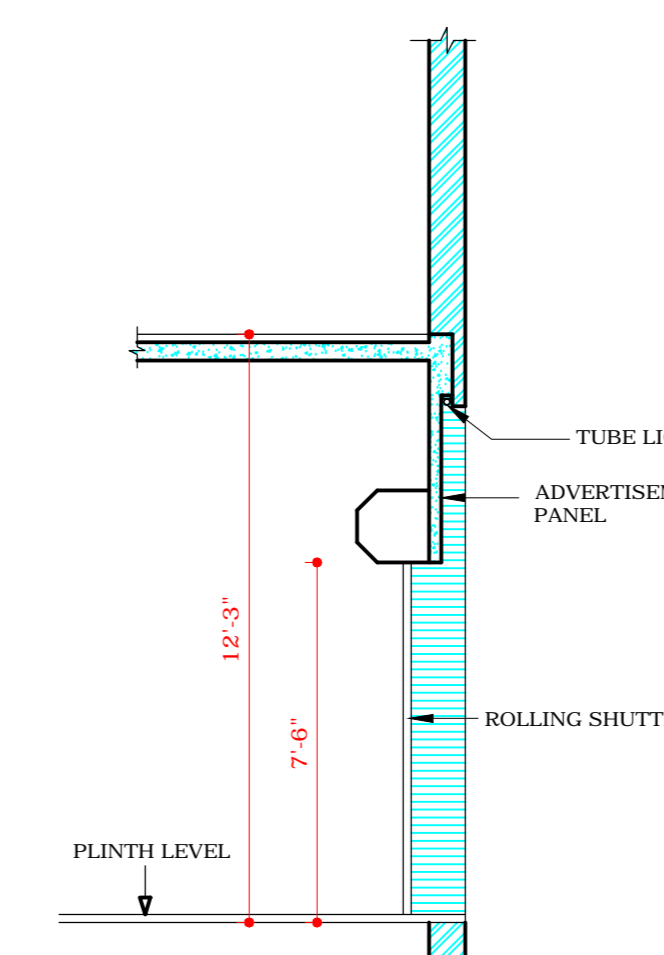


FRONT ELEVATION

COPYRIGHT:
DEPARTMENT OF URBAN PLANNING
CHANDIGARH ADMINISTRATION



SECTION AT 'A-B'



PART SECTION AT 'C-D'

DISCLAIMER
THOUGH EVERY CARE HAS BEEN TAKEN TO PROVIDE THE CORRECT VERSION OF THE ARCHITECTURAL CONTROL ON THIS DIGITIZED (PDF) FORMAT, YET IN CASE OF ANY DISCREPANCY, THE MASTER COPY OF THE ARCHITECTURAL CONTROL APPLICABLE ON EACH SUCH SITE, AS AVAILABLE IN THE COMMERCIAL RECORD OF THE OFFICE OF CHIEF ARCHITECT OR HER/HIS INTERPRETATION WILL OVERRULE THE DIGITIZED FORMAT.