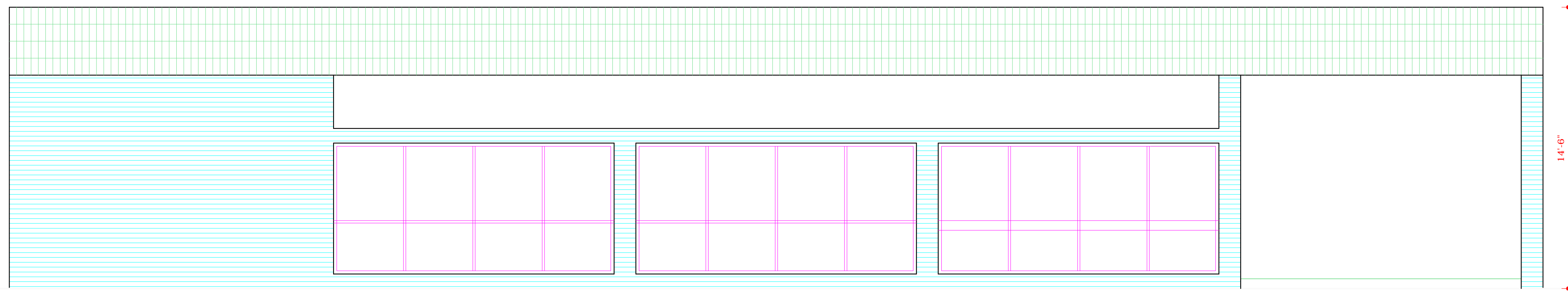
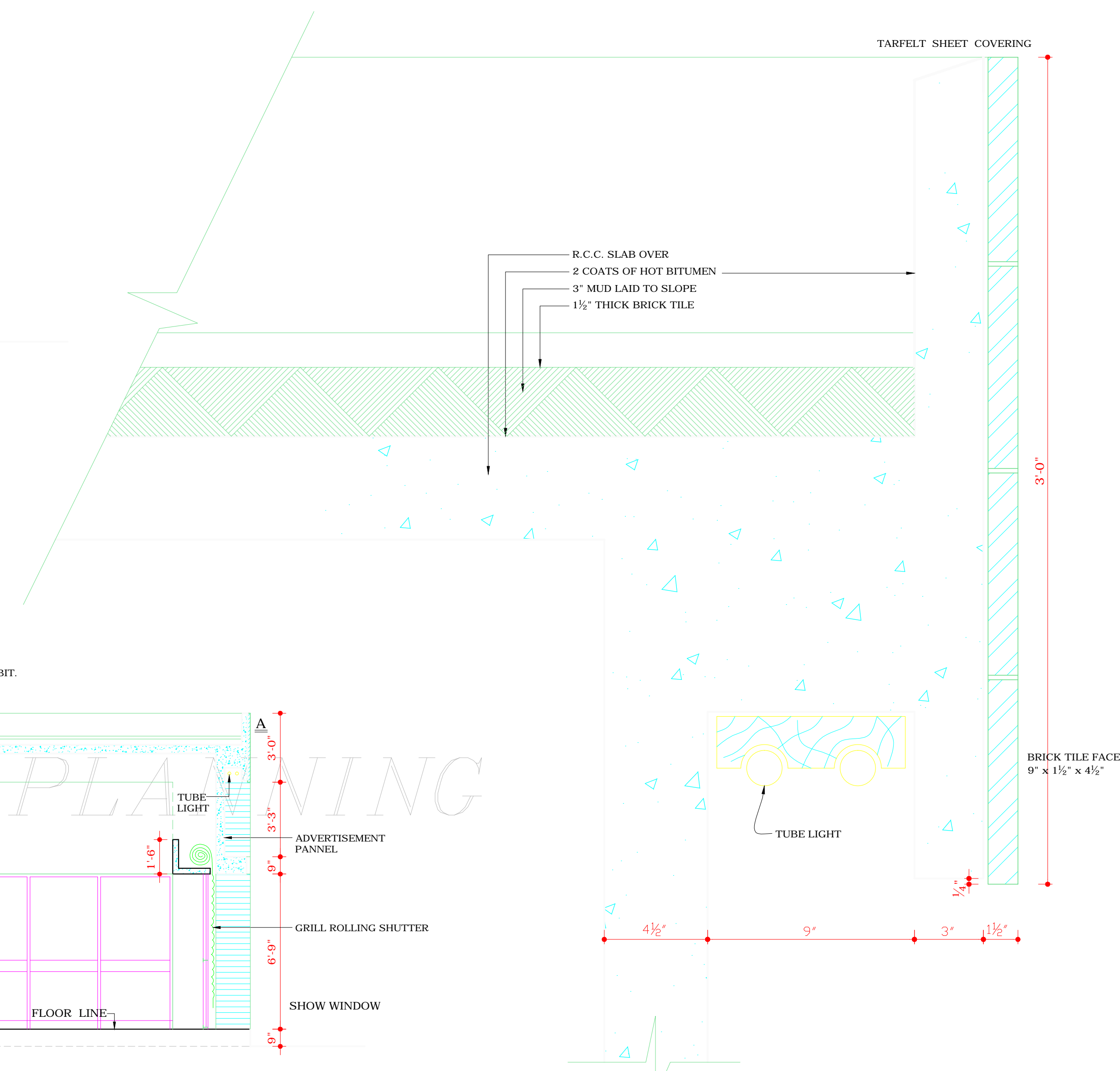


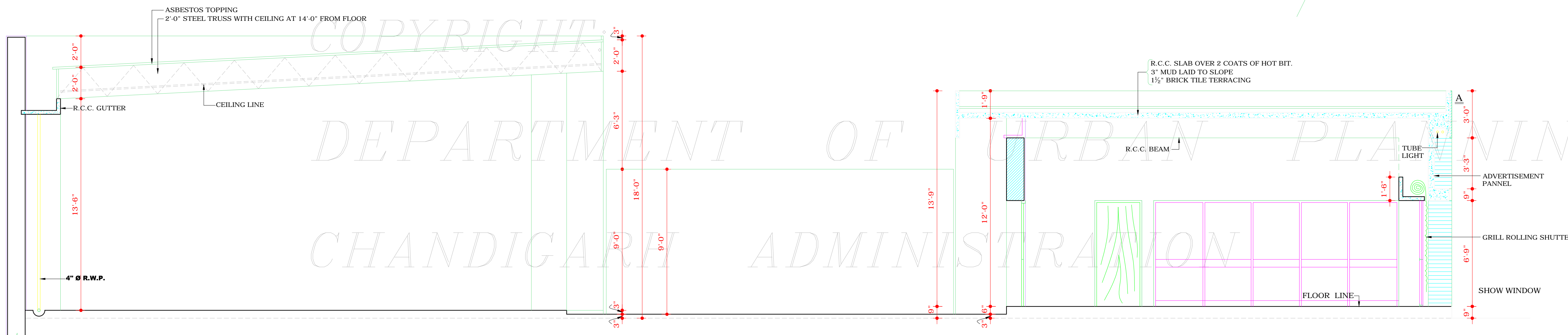
DEPARTMENT OF
ARCHITECTURE



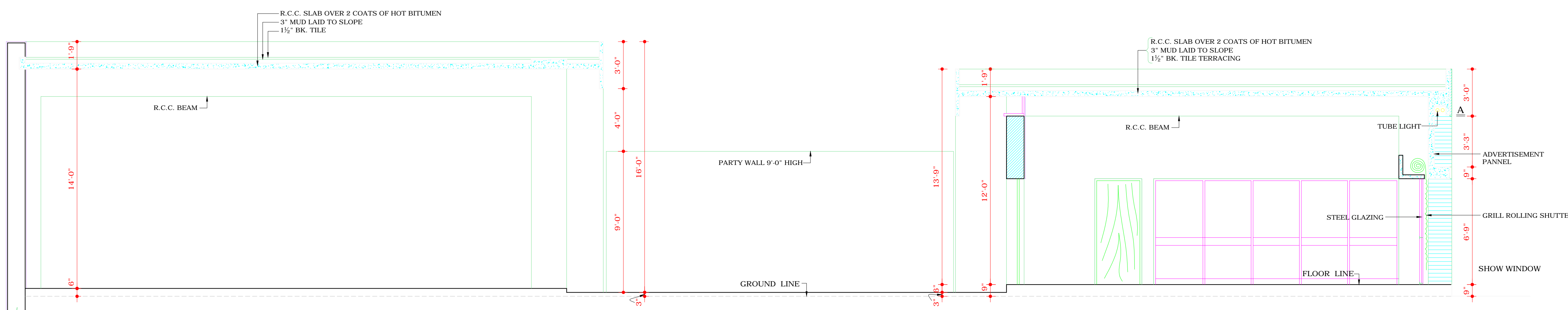
FRONT ELEVATION



QUARTER FULL SIZE DETAIL AT A



SECTION ON LINE A B



SECTION ON LINE A B (IN CASE OF R.C.C. SLAB ON SHED (WORKSHOP))

S.No. NOTES.

THIS DRG. IS THE PROPERTY OF DEPTT. OF ARCHITECTURE CHANDIGARH AND MUST NOT BE ALTERED, COPIED OR USED IN PART OR IN WHOLE WITHOUT THE PERMISSION OF THIS DEPTT. IN WRITING.

NOTES:- THIS DRAWING HAS BEEN COMPUTERISED ON 15-03-10 FROM DRG. No. 4 JOB No. 494.

ATTESTED Sd/- O.P. MEHTA ARCHITECT
CHECKED Sd/- IQBAL SINGH 22/7/69 ASSTT. ARCHITECT

Sd/- DALJEET SINGH 2-3-68
CHIEF ADMINISTRATOR

Sd/- M.N. SHARMA 2-3-68 CHIEF ARCHITECT
Sd/- J.S. DETHE 2-3-68 SENIOR ARCHITECT

Sd/- O.P. MEHTA 1-3-68 ARCHITECT
Sd/- IQBAL SINGH ASSTT. ARCHITECT

OFFICE OF THE CHIEF ARCHITECT & SECRETARY CHANDIGARH (U.T.)

SCALE:- FOUR FEET TO AN INCH & 1/4 FULL SIZE
DATE- JULY 16, 1969

DRAWN Sd/- JOGINDER RE-DRAWN P. PARKASH TEJPAUL
JOB No. 494
DRG. No. 4

TWO KANAL WORKSHOP INDUSTRIAL AREA

ELEVATION & SECTIONS

THE NECESSARY APPROVAL OF THE CHIEF ADMINISTRATOR FOR THE ADDITIONAL COVERAGE, WITH-IN THE HEIGHT LIMIT (9'-0") SHOWN AS CYCLE STAND WITH LINK PASSAGE AND OPEN COURTS ON EITHER SIDES, OBTAINED VIDE HIS OFFICE MEMO No. 1409 U.T.F.I. (2)-77/8435 DATED 25.5.77

DISCLAIMER

THOUGH EVERY CARE HAS BEEN TAKEN TO PROVIDE THE CORRECT VERSION OF THE ARCHITECTURAL CONTROL ON THIS DIGITIZED (PDF) FORMAT, YET IN CASE OF ANY DISCREPANCY, THE MASTER COPY OF THE ARCHITECTURAL CONTROL APPLICABLE ON EACH SUCH SITE, AS AVAILABLE IN THE COMMERCIAL RECORD OF THE OFFICE OF CHIEF ARCHITECT OR HER/HIS INTERPRETATION WILL OVERRULE THE DIGITIZED FORMAT.