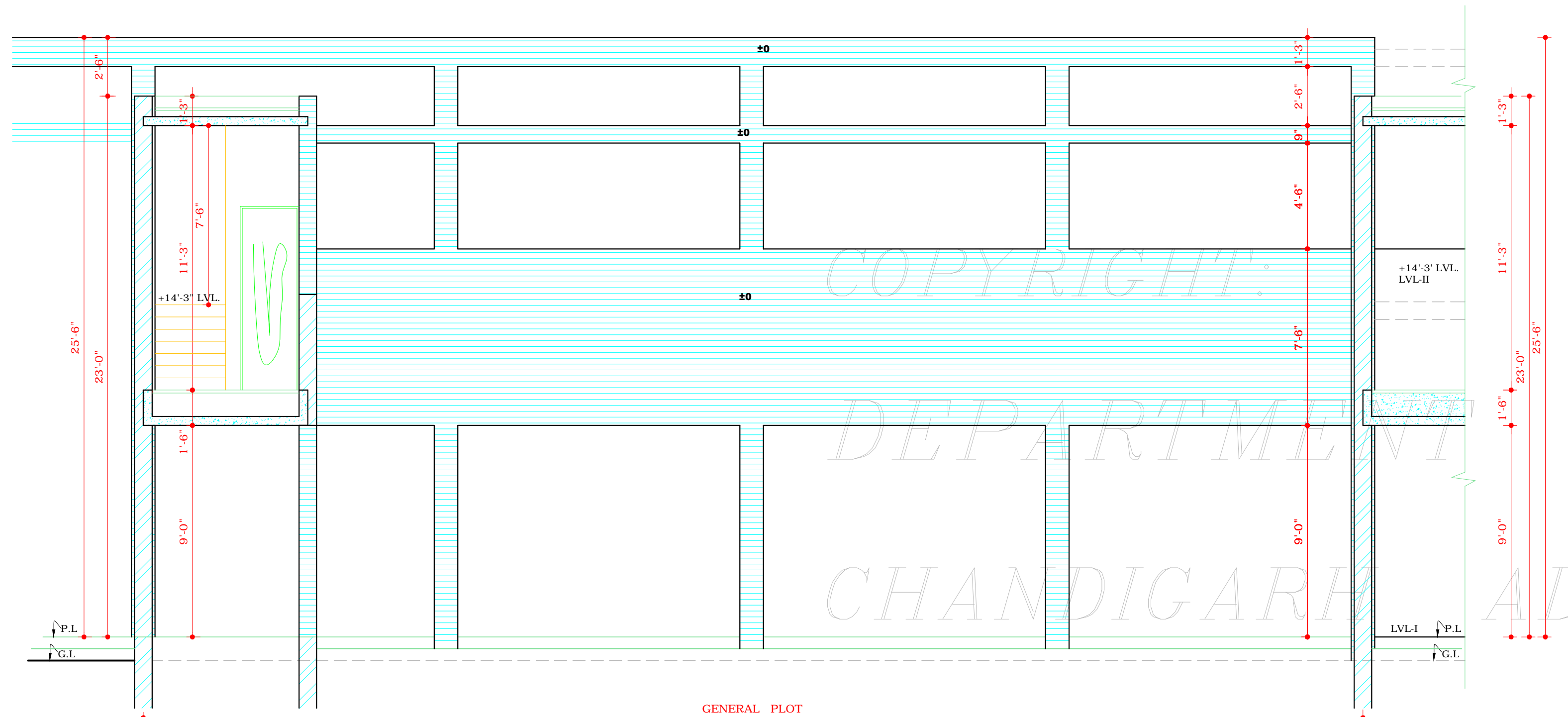
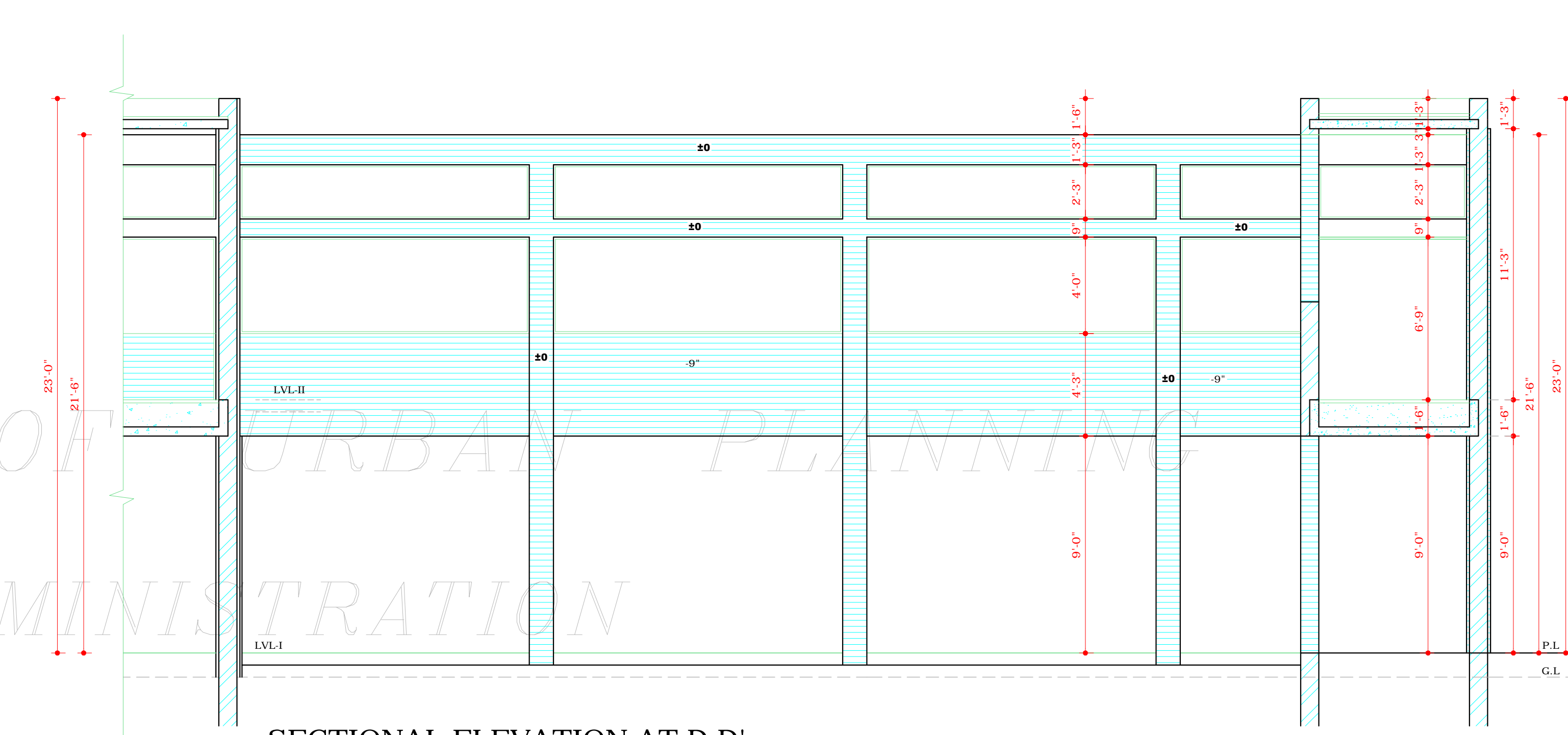


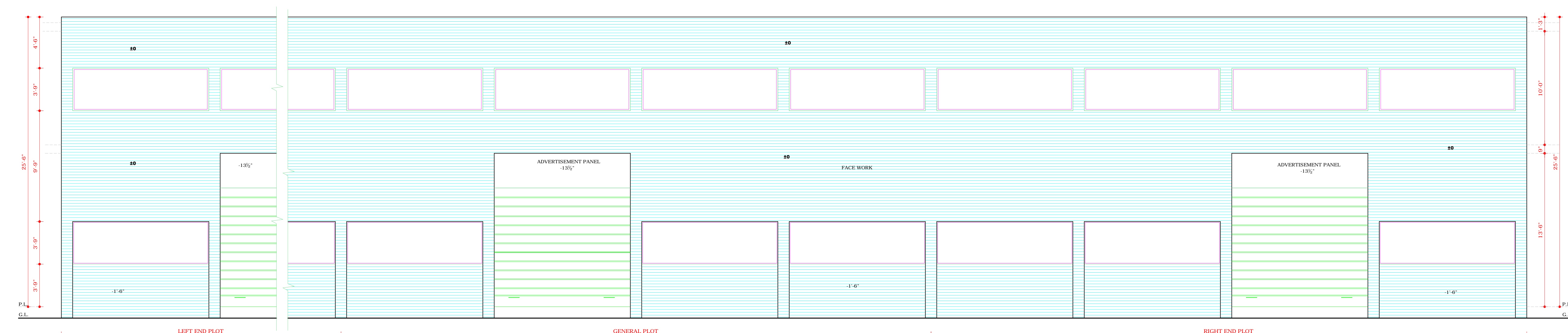
SECTIONAL ELEVATION AT E-E'



SECTIONAL ELEVATION AT C-C'



SECTIONAL ELEVATION AT D-D'



FRONT ELEVATION

S.No. NOTES.
THE POSITION OF THE ENTRANCE GATE SHALL BE SITUATED AT THE FAR END, OPPOSITE TO THE CORNER OF THE ROAD.

NOTE: THIS DRAWING HAS BEEN COMPUTERISED ON 11-05-10 FROM DRG. No. 3/R1 JOB No. 2093.

S.No.	DESCRIPTION	SIGN	DATE
-------	-------------	------	------

REVISIONS

Sd/- RENU SAIGAL CHIEF ARCHITECT	
SENIOR ARCHITECT	SENIOR TOWN PLANNER
Sd/- RAJINDER SINGH KALSI ARCHITECT	ASSTT. ARCHITECT

OFFICE OF
THE CHIEF ARCHITECT
U.T. CHANDIGARH.

SCALE = 1/4" TO A FT. DATE :-

BHUPINDER KAUR DRAWN BY:	JOB No. 2093	DRG. No. 3/R1
-----------------------------	-----------------	------------------

CHECKED BY:
REVISED ARCHITECTURAL CONTROL SHEET FOR PRESS SITES IN INDUSTRIAL AREA PHASE - I PLOT SIZE :-52'-6" x 78'-9" (16M x 24 M) TO PROVIDE F.S.I UP TO 1.00 INSTEAD OF 0.75.

FRONT ELEVATION &
SECTIONS

(APPROVAL OF THIS CHIEF ADMINISTRATOR RECEIVED VIDE HIS OFFICE MEMO No. 21/1/243-UTFI (3)-2005/6035 DATED 19-8-2005)

Sd/- CHIEF ADMINISTRATION
CHANDIGARH ADMINISTRATION

DISCLAIMER

THOUGH EVERY CARE HAS BEEN TAKEN TO PROVIDE THE CORRECT VERSION OF THE ARCHITECTURAL CONTROL ON THIS DIGITIZED (PDF) FORMAT, YET IN CASE OF ANY DISCREPANCY, THE MASTER COPY OF THE ARCHITECTURAL CONTROL APPLICABLE ON EACH SUCH SITE, AS AVAILABLE IN THE COMMERCIAL RECORD OF THE OFFICE OF CHIEF ARCHITECT OR HER/HIS INTERPRETATION WILL OVERRULE THE DIGITIZED FORMAT.