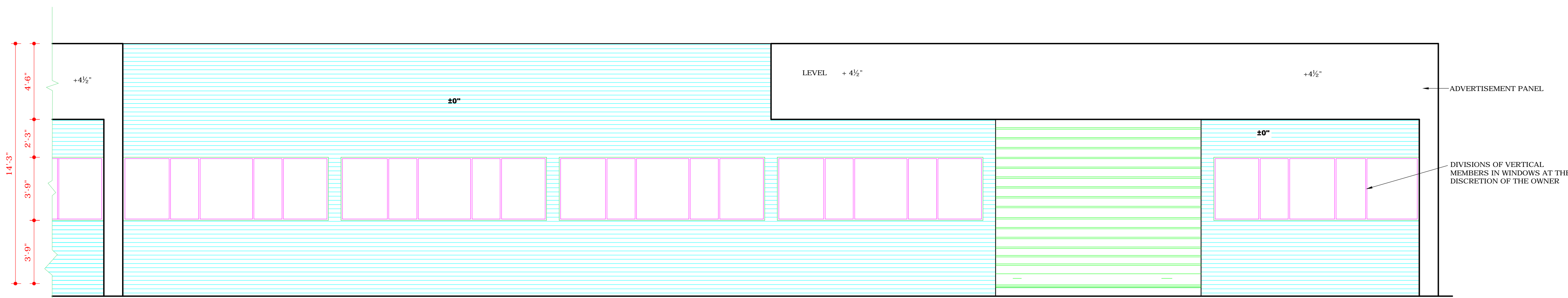
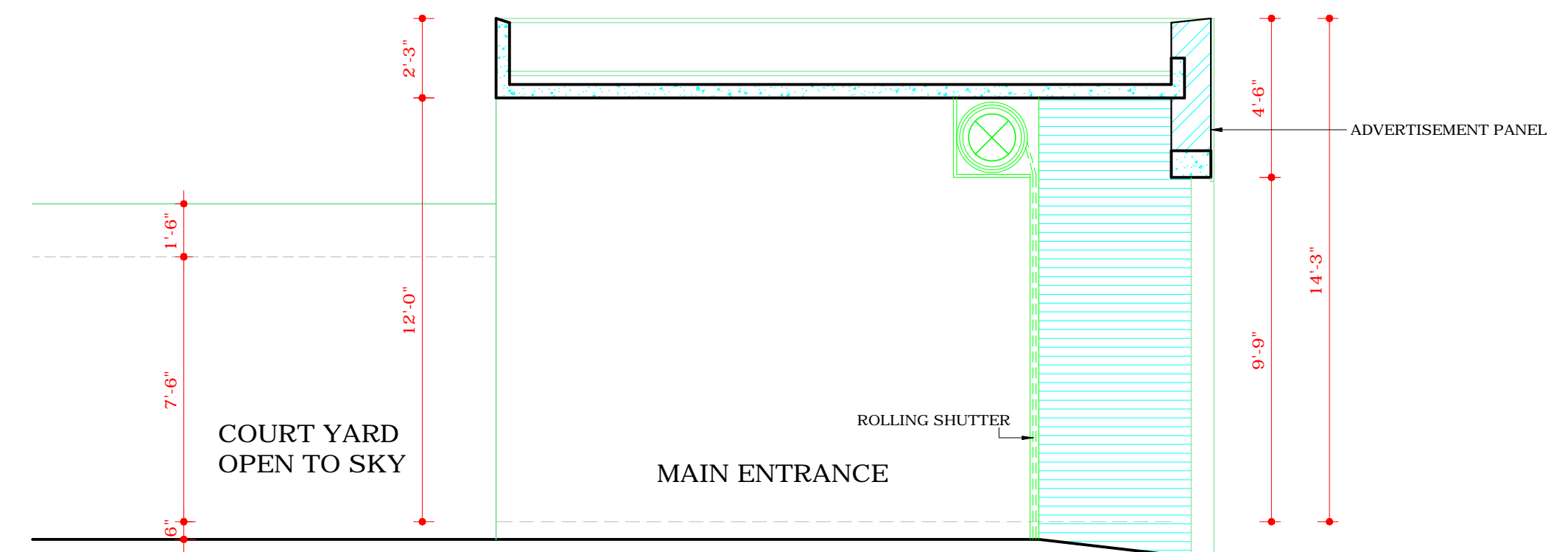


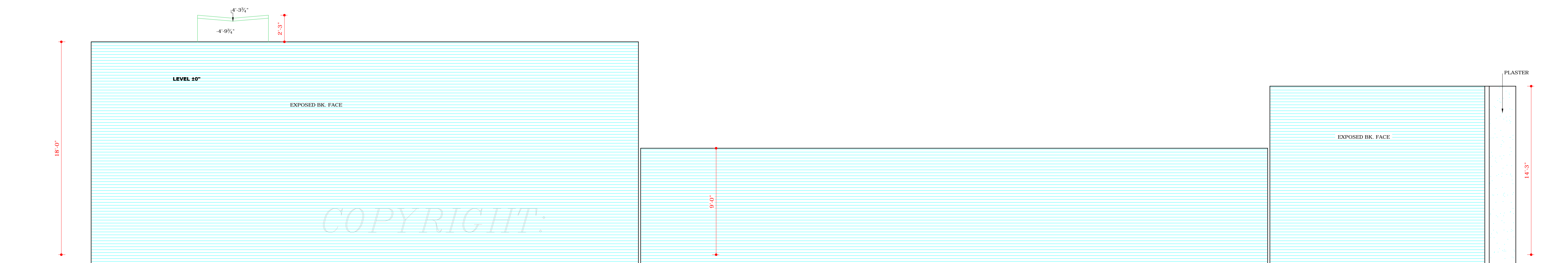
DEPARTMENT OF ARCHITECTURE U.T.



ELEVATION ALT 1



SECTION AT B B

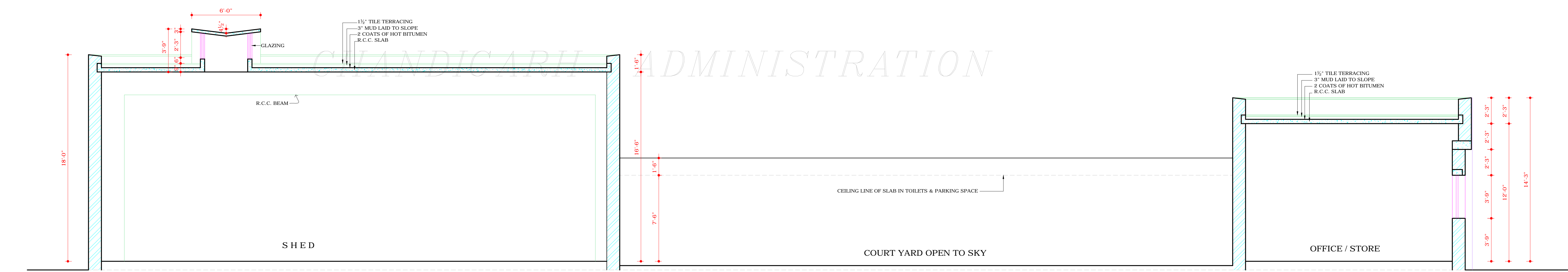


LEFT SIDE END ELEVATION

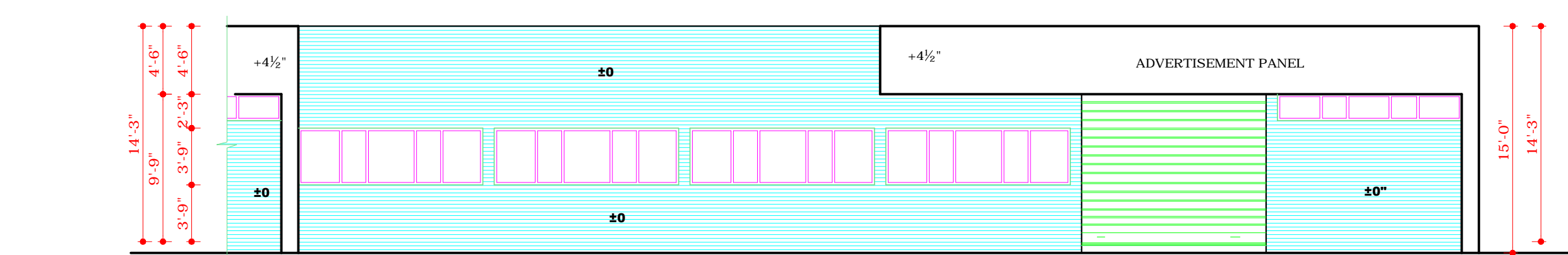
COPYRIGHT:

DEPARTMENT OF URBAN PLANNING

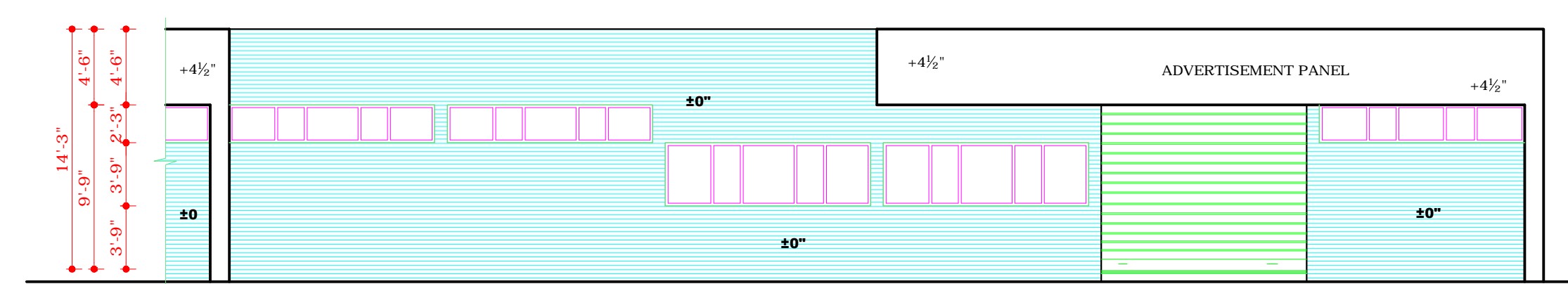
CHANDIGARH ADMINISTRATION



SECTION AT A A



ELEVATION ALT. 2



ELEVATION ALT. 3

DISCLAIMER

THOUGH EVERY CARE HAS BEEN TAKEN TO PROVIDE THE CORRECT VERSION OF THE ARCHITECTURAL CONTROL ON THIS DIGITIZED (PDF) FORMAT, YET IN CASE OF ANY DISCREPANCY, THE MASTER COPY OF THE ARCHITECTURAL CONTROL APPLICABLE ON EACH SUCH SITE, AS AVAILABLE IN THE COMMERCIAL RECORD OF THE OFFICE OF CHIEF ARCHITECT OR HER/HIS INTERPRETATION WILL OVERRULE THE DIGITIZED FORMAT.

APPROVAL OF THE CHIEF ADMINISTRATOR  
CONVEYED VIDE MEMO No. 5182-UT FI(2)-77/14394  
DATED 26.8.77

Sd/-  
M.S. CHAHAL 20.8.77  
CHIEF ADMINISTRATOR

S.No. NOTES.

THE DRAWING IS THE PROPERTY OF THE DEPTT. OF ARCHITECTURE, CHANDIGARH, FORMERLY OF P.B. GOVT. & MUST NOT BE ALTERED COPIED OR USED IN WHOLE OR IN PART WITHOUT THE PRIOR PERMISSION OF THIS DEPTT. IN WRITING

S.No. DESCRIPTION

REVISIONS

Sd/- M.N. SHARMA 25/2/77 CHIEF ARCHITECT	Sd/- 25/2/77 SENIOR ARCHITECT
Sd/- S.K. MIDHA 24/2/77 ARCHITECT	Sd/- 24.2.27 ASSTT. ARCHITECT

OFFICE OF THE CHIEF ARCHITECT  
CHANDIGARH U.T.

SCALE = 1/4" = 1'-0" & 1/8" = 1'-0"

DATE - 21.2.77

DEALT BY JASWINDER VIRDI	JOB. No.	DRG. No.
CHECKED BY	987	2

ARCHITECTURAL CONTROL OF TWO KANAL PLOTS FOR POWER LOOM INDUSTRY, INDUSTRIAL AREA CHANDIGARH

ELEVATIONS & SECTION