

NOTES

THE DRG. IS THE PROPERTY OF THE DEPARTMENT OF URBAN PLANNING, CHANDIGARH ADMINISTRATION AND MUST NOT BE ALTERED, COPIED OR USED IN WHOLE OR IN PART WITHOUT THE PERMISSION OF THIS DEPARTMENT IN WRITING.

THIS DRG. IS TO BE READ ALONG WITH DRG. Nos. 3, 4, & 5

NOTES:
THIS DRAWING HAS BEEN COMPUTERISED ON DATED 5-08-2017 FROM DRG. No. 6 JOB No. 923

S. No.	DESCRIPTION	SIGN.	DATE
--------	-------------	-------	------

REVISIONS

Sd/-
(BENU SARGAL)
CHIEF ARCHITECT

Sd/-
(RAJINDER SAINI)
SENIOR ARCHITECT

Sd/-
(SANJEEV KUMAR)
ARCHITECT

ASSTT. ARCHITECT

OFFICE OF THE
CHIEF ARCHITECT U.T.,
CHANDIGARH

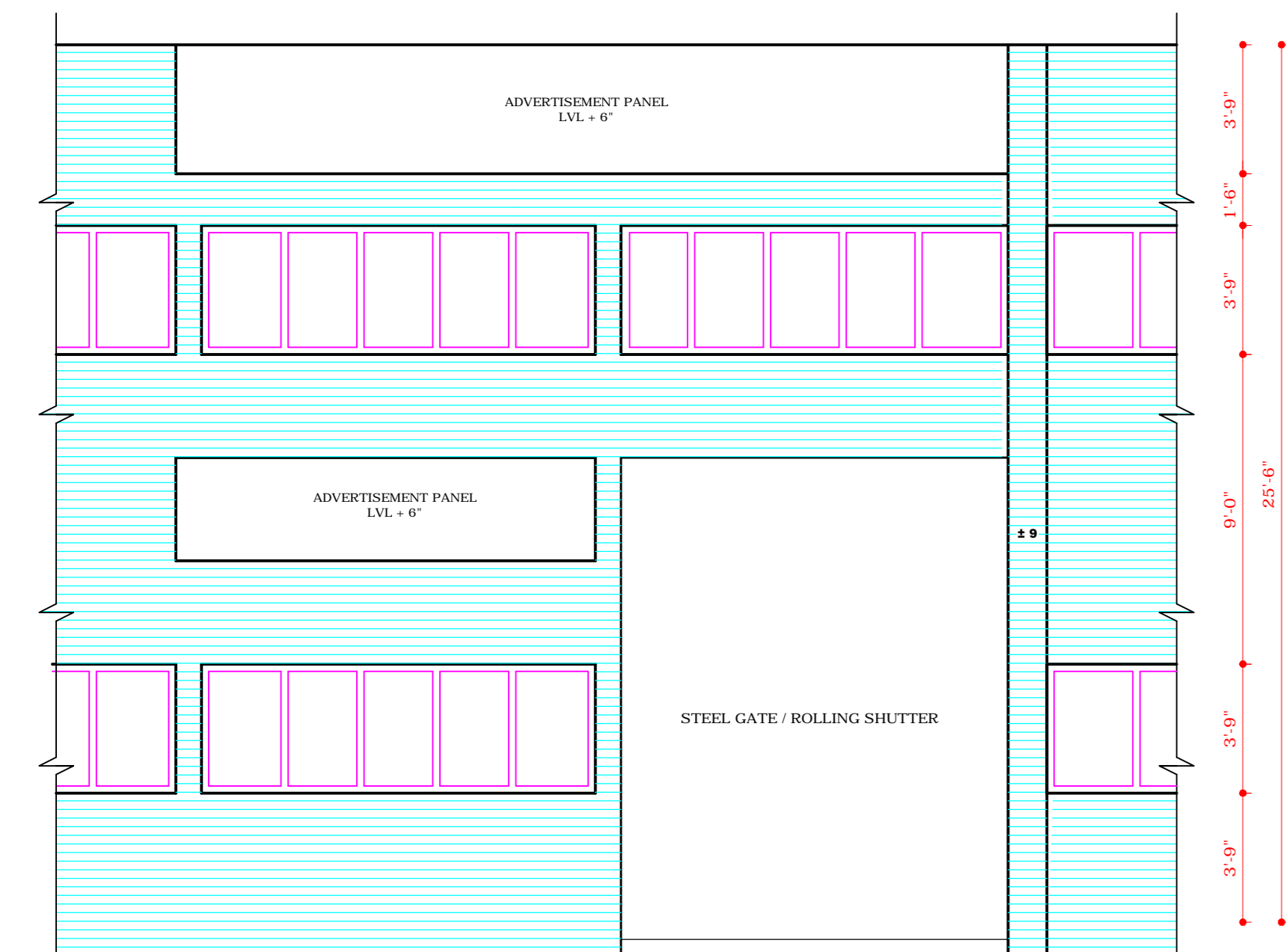
SCALE:- 1" = 1'-0"

DATE:- 30-03-05

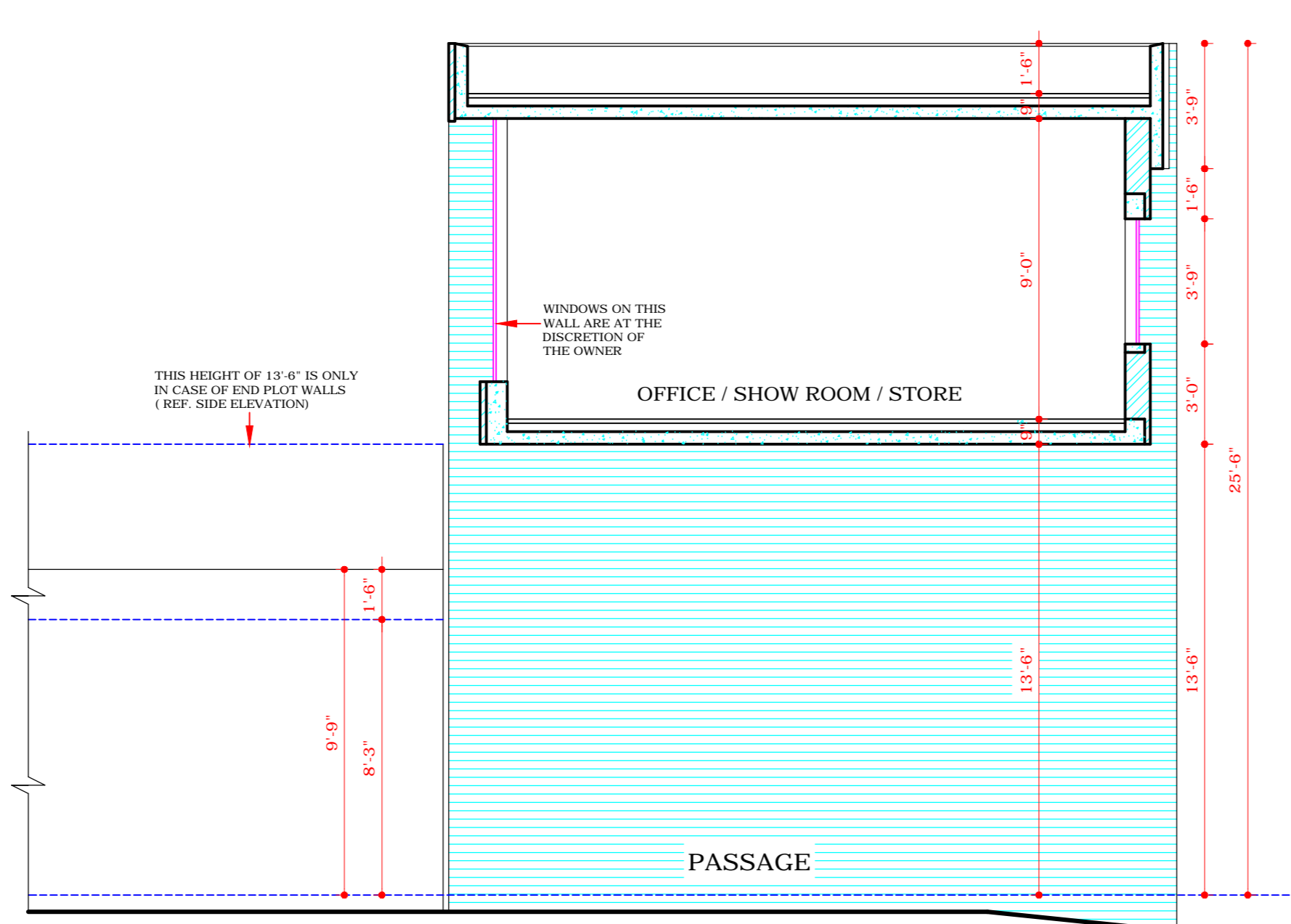
Drawn By: (Daminder Virdi)
JOB No. 923
DRG. No. 6

CHECKED BY:
ARCHITECTURAL CONTROL
OF 1½" KANAL PLOTS FOR
ELECTRONIC INDUSTRY AND
OTHER HEAVY INDUSTRIES IN
INDUSTRIAL AREA (UPTO F.S.I. 1.00)

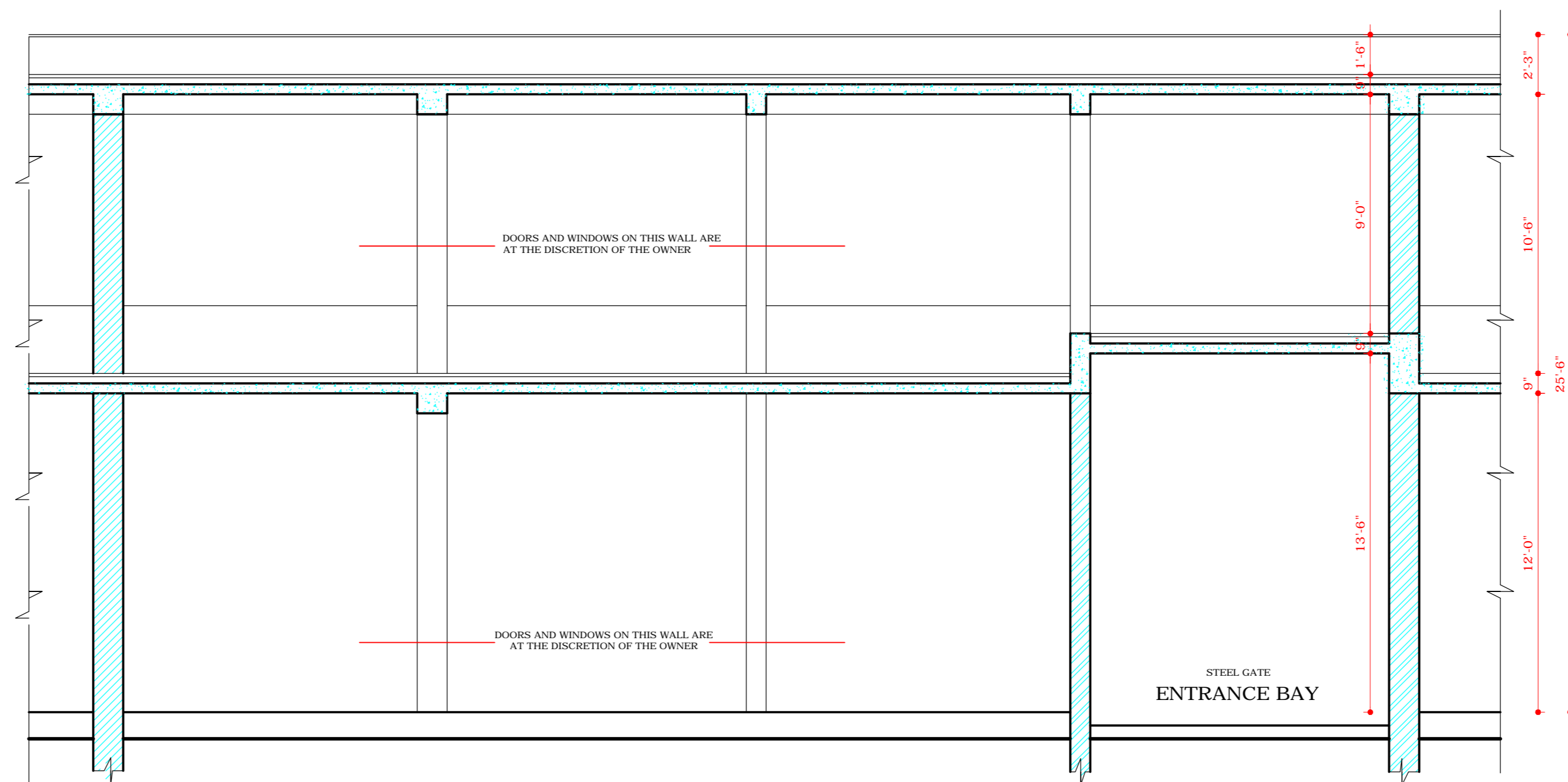
END ELEVATION PART
FRONT ELEVATION AND
SECTIONS AT 'B B' AND 'C C'



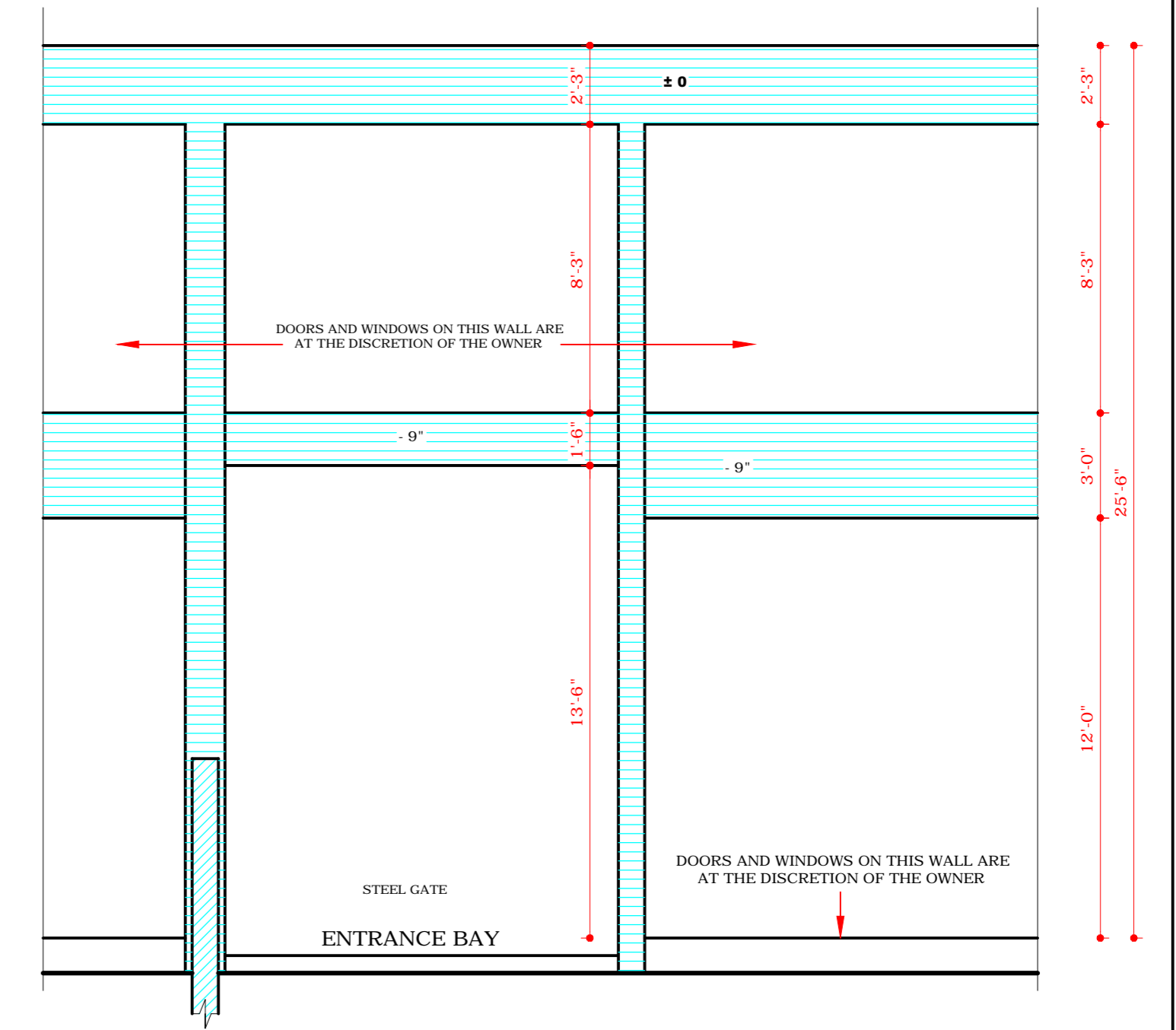
ALTERNATIVE FRONT ELEVATION
(THE ENTRANCE GATE IS SHIFTED
TO THE RIGHT HAND CORNER)



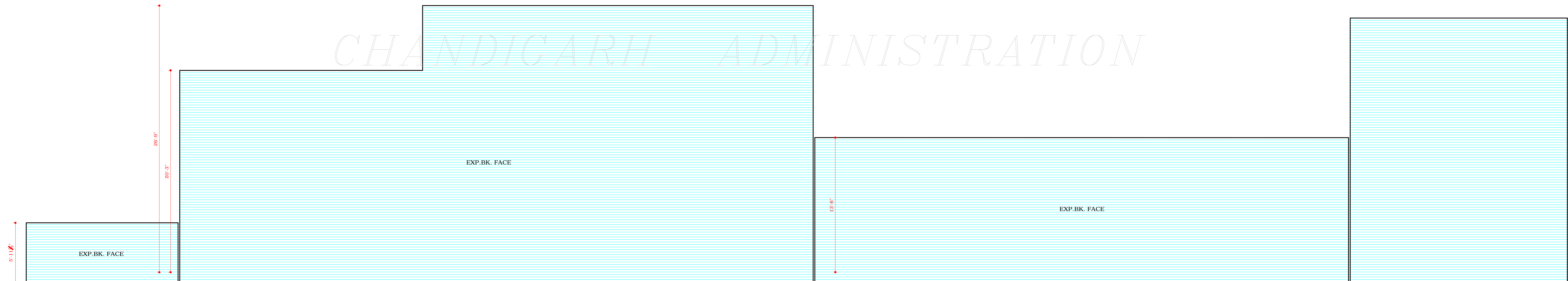
SECTION AT 'B B'
AS PER ALTERNATIVE
FRONT ELEVATION
(WITH ENTRANCE SHIFTED
TO THE RIGHT HAND CORNER)



SECTION AT 'C C'
AS PER ALT. FRONT ELEVATION
(WITH ENTRANCE SHIFTED TO
RIGHT HAND CORNER)



PART SECTIONAL ELEVATION AT 'Z Z'
AS PER ALT. FRONT ELEVATION
WITH ENTRANCE SHIFTED
TO RIGHT HAND CORNER



SIDE ELEVATION

DISCLAIMER

THOUGH EVERY CARE HAS BEEN TAKEN TO PROVIDE THE CORRECT VERSION OF THE ARCHITECTURAL CONTROL ON THIS DIGITIZED (PDF) FORMAT, YET IN CASE OF ANY DISCREPANCY, THE MASTER COPY OF THE ARCHITECTURAL CONTROL APPLICABLE ON EACH SUCH SITE, AS AVAILABLE IN THE COMMERCIAL RECORD OF THE OFFICE OF CHIEF ARCHITECT OR HER/HIS INTERPRETATION WILL OVERRULE THE DIGITIZED FORMAT.

APPROVAL OF CHIEF ADMINISTRATOR
VIDE HIS OFFICE MEMO No. 21/1/296 -UTFI(3)
-2005 / 3368 DATED CHANDIGARH
THE 17/5/2005

Sd/-
S.K. SANDHU
CHIEF ADMINISTRATOR